

**PLEASE TAKE NOTE**  
**UNCW IS A PEDESTRIAN CAMPUS – USE EXTREME CAUTION AS OUR STUDENTS MAY BE CROSSING ROADWAYS IN ROUTE TO LOCATIONS AROUND CAMPUS**



University of North Carolina

**WILMINGTON**

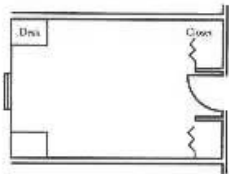
Office of Admissions

## UNIVERSITY HOUSING “DRIVING TOUR”

- Exit Visitor’s Parking, turning **LEFT** onto **WAGONER DRIVE**. Turn **LEFT** onto **HURST DRIVE**, then **LEFT** onto **HAMILTON DRIVE**. Turn **RIGHT** onto **RIEGEL ROAD**. Immediately after passing Brooks Stadium, you will see *Belk Hall* and *Galloway Hall* to your left.
  - *Belk Hall* is a four-story, all female residence hall, which houses 192 students. Each suite contains two bedrooms, each with double occupancy in each, a study/living room and a shared double bath with an adjacent suite. Laundry facilities are located on each floor. There is a TV lobby, vending area, ice machine, kitchenette and computer lab on the first floor.
  - *Galloway Hall* is a six-story residence hall housing 389 co-educational students, two students per room. Each floor has common baths, a furnished lounge, a study room and laundry facilities. Galloway Hall has a vending area, computer lab, ice machines and a copy machine. There is a community microwave on each floor.
- As you round the corner, you will notice *Graham Hall* and *Hewlett Hall*.
  - Both *Graham Hall* and *Hewlett Hall* are four-story, co-educational residence halls, which house 192 students each. The floor plans and furnishings are identical to *Belk Hall* with two students per room, eight students per suite.
  - A large living room, commonly called the “Graham-Hewlett Connector” connects the two residence halls. This project was built to provide UNCW on-campus students with new services and facilities. In the building, students can find two laundry facilities, a computer lab, classrooms, study rooms and the Great Room—a large lounge/den area complete with couches and a large screen TV; perfect for accommodating large meetings.
- Continue down **RIEGEL ROAD**, turning **LEFT** onto **WALTON DRIVE**. To your left you will see a cluster of smaller buildings known as the *University Apartments*.
  - The *University Apartments* feature 13 individual apartment buildings with 8 apartment units per building.
  - The thirteen buildings house a total of 400 students. Each “apartment” has four single bedrooms, a bathroom, a living room and a kitchenette. Each kitchenette is furnished with a stove/oven and refrigerator. There is an office, laundry facility, and convenience store located in Apartment M for use by the apartment residents.
- As you continue down **WALTON DRIVE**, you will see *Schwartz Hall* and the *University Suites* on your right.
  - *Schwartz Hall* is a three-story, co-educational residence hall that houses 155 students. The rooms are designed for double occupancy. TV lounges, study rooms and kitchenettes are provided throughout the building. The lounge connects three pods and each pod houses 18-20 students. The pods have community bathrooms. Laundry facilities, vending machines and an ice machine are located on the first floor. A computer lab is also located on the first floor. Each pod or floor is also “themed”, including a Study/Quiet pod, a Health/Wellness Floor, a North Carolina Teaching Fellows floor, and a Men’s Leadership pod.
  - The *University Suites* are made up of six buildings with six pods and one building with four pods. Each pod houses 10 students who share a living room, dining room, bathroom and kitchenette. The kitchenette is furnished with a refrigerator, sink and stove/oven. The *University Suites* house 400 coeducational students in both single and double rooms.
  - Immediately behind *Schwartz Hall* in the smaller one-story building is the *Office of Housing & Residence Life*.
- Continue down **WALTON DRIVE** turning **RIGHT** onto **CAHILL DRIVE**. On your left you will see *Honors House*, *International House*, and *Cornerstone Hall*.
  - *Honors House* and *International House* share an identical layout, incorporating a formal lobby bordered by four residential wings. Each building is two stories and house 100 students in groups of 25 per pod. While the buildings are co-educational, each pod is single sex. Residents of each pod live in double-occupancy rooms, which share common bath facilities and a common gathering area. Each building also features a computer lab, laundry facilities, kitchen, quiet lounge and conference rooms. *Honors House* is by invitation only through our Honors Scholars Program and *International House* features an American student and a foreign student in each room.
  - *Cornerstone Hall* is a three-story, co-educational building housing 264 students. The building contains TV lounges, computer facilities, study rooms and kitchen. The building is broken into 5 pods, each containing 49 students. Each pod shares a common bathroom facility. The building includes four classrooms to facilitate UNCW’s Cornerstone Learning Communities. First-year students **ONLY** can live in *Cornerstone Hall*.

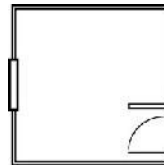
**PLEASE TAKE NOTE**  
**UNCW IS A PEDESTRIAN CAMPUS – USE EXTREME CAUTION AS OUR STUDENTS MAY BE CROSSING ROADWAYS IN ROUTE TO LOCATIONS AROUND CAMPUS**

- Continue down **WALTON DRIVE**, turning around in the traffic circle. As you turn around, you will see *Seahawk Village Apartments* immediately in front of you and *Seahawk Landing Apartments* beyond *Cornerstone Hall*.
  - *Seahawk Village Apartments* feature six three-level apartment buildings with 8 two bedroom apartments, 52 three bedroom apartments, and 88 four bedroom apartments for a total capacity of 524 students. The six buildings are clustered in three-building triads, with nicely landscaped courtyards and convenient parking. The complex includes a clubhouse, patio area, swimming pool, and volleyball courts. Each apartment features a modern living room, separate dining room, modern kitchen with a full appliance package, cabinets, and counter space, a washer and dryer, private bedrooms, bathrooms (approximately one bathroom per two bedrooms), and individual bedrooms. Each apartment is fully furnished and the rates include electricity, sewer, water, high-speed Ethernet, local telephone, and cable television. Payments for *Seahawk Village Apartments* are due three times a year: August, December, and May. The lease runs for a twelve month period with the option to sublease for the summer. Leases begin August 1. Upperclassmen ONLY can live in *Seahawk Village Apartments*.
  - *Seahawk Landing Apartments* opened August 1, 2007, and are set-up and leased similarly to *Seahawk Village Apartments*, only they feature an "Urban Street" layout of the buildings with special features on the first floor of each of the seven units. These features include a branded coffee house, a branded food service facility, office space, an outdoor pool, student mail boxes, and a workout area. *Seahawk Landing Apartments* will house 603 students in 10 two-bedroom apartments, 49 three-bedroom apartments, and 109 four-bedroom apartments. These apartments are also reserved for upperclassmen ONLY.
- Continue to the stop sign, and make a **RIGHT** onto **REYNOLDS DRIVE**. **REYNOLDS DRIVE** will become **RANDALL DRIVE** as you round the corner. At the second stop light you will be at **SOUTH COLLEGE ROAD** and can depart accordingly. Thank you for visiting the University of North Carolina Wilmington.



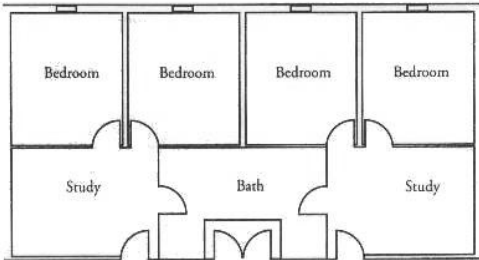
**GALLOWAY, INTERNATIONAL HOUSE,  
SCHWARTZ, HONORS HOUSE**

Bedroom Dimension: 10 x 16 feet  
 Ceiling Height: 8 feet, Galloway  
 10', Schwartz, Honors & International



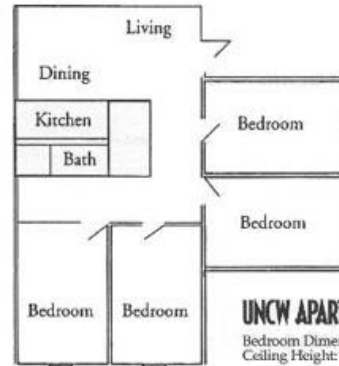
**CORNERSTONE HALL**

Bedroom Dimensions:  
 12 x 15 double  
 18 x 15 triple  
 Ceiling Height: 10 feet



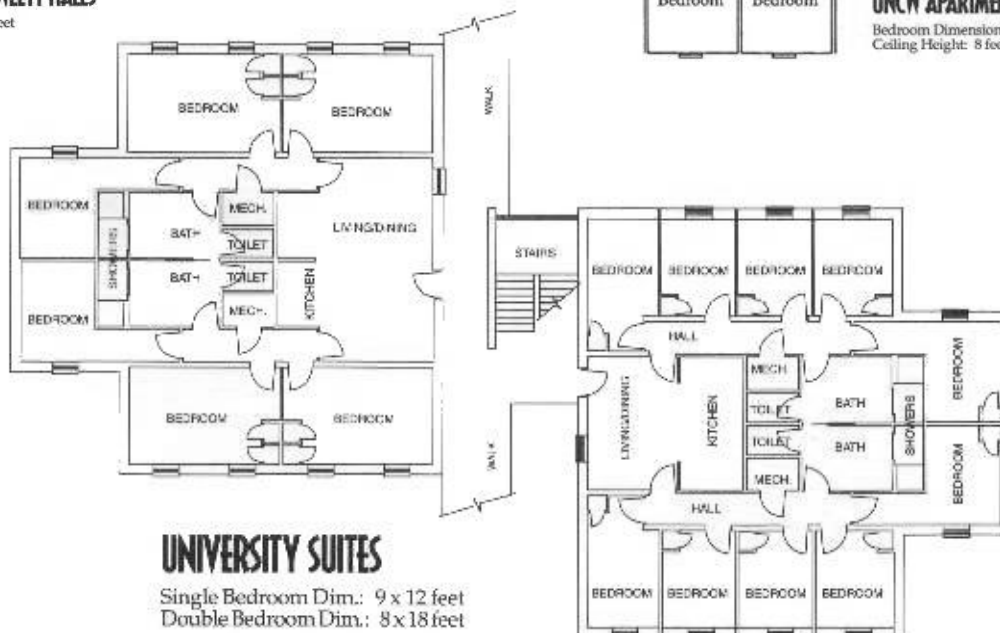
**BELK, GRAHAM AND HEWLETT HALLS**

Bedroom Dimension: 11 x 15 feet



**UNCW APARTMENTS**

Bedroom Dimension: 8 x 10 feet  
 Ceiling Height: 8 feet



**UNIVERSITY SUITES**

Single Bedroom Dim.: 9 x 12 feet  
 Double Bedroom Dim.: 8 x 18 feet