

2009 APPLIED LEARNING
AWARDED TO THE
DEPARTMENT OF THEATRE

During the Fall semester of 2009, the Department of Theatre was awarded Applied Learning resources to develop an inventory of stock flats. The following presentation documents the success of this award.

We would like to thank Dean Cordle and his entire staff for their ongoing support of the Arts, and their understanding of the importance of how excellent training is supported through such awards.

Applied Learning Projects

Creation of a stock flat inventory for the Department of Theatre (Awarded Fall 2009)

Given the current budget considerations on a national level, it is imperative that all programs develop and institute plans for conserving resources. The Theatre Department could save money, time and labor if the scenic studio, in concert with designers establishes and maintains certain stock scenic elements for production use. A very common element is an inventory of flats that can be reconfigured, based on production needs. The units can be placed in service for all productions requiring an interior setting. They may also be used in non-interior designs as large surfaces for masking. I propose we design and construct a series of these units to begin the process of creating stock flats that will be reusable for future productions. Students will learn to construct these units (in a manner they are unaccustomed to), and to create designs incorporating stock. Construction of these units could coincide with student labs and reinforce what is being taught in class.

Materials Needed:

1 x 6 x 12'-0" C-Select white pine, 1/4" Lauan, Wood glue, narrow crown staples and corrugated fasteners.

Projected Cost: \$1237.00

Learning Outcomes:

Students involved with this project should learn the following:

- To develop ideas to better serve their production and audience needs
- To develop organization and management techniques to maximize efficiency in their production area
- To implement plans for operation to allow them to operate a smooth, efficient and cost effective organization
- To understand physical characteristics of materials in order to choose the right materials for tasks
- To learn wood fabrication techniques
- To research new ideas and processes for fabrication
- To research and run problem solving circuits to successfully develop design or procedural standards
- To project and plan for future needs

This award supported Stagecrafts (THR110) lectures in the following areas:

Safe usage of portable power tools

Efficient usage of portable power tools

Safe usage of stationary power tools

Efficient usage of stationary power tools

Fabrication techniques for standard flats

Following are images of students applying classroom instruction to fabricate the stock flats.

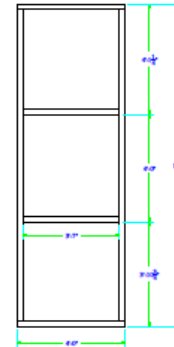
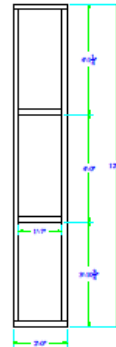
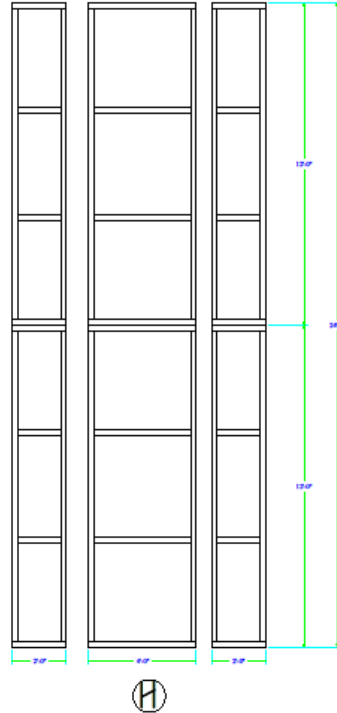
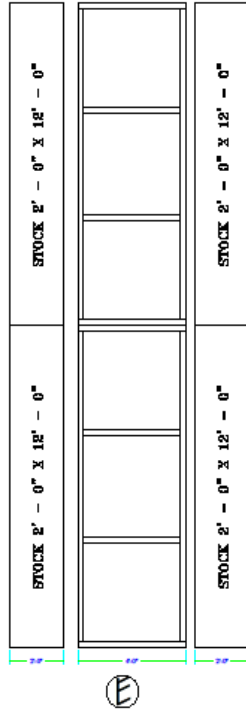
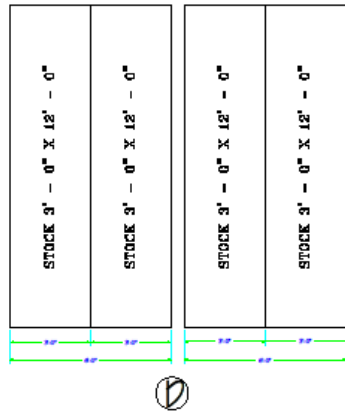








These stock flats were constructed near the end of the Fall Semester. As part of the learning objectives of our department we attempt to teach and demonstrate the importance of designing, implementing and maintaining stock elements to assist in production. The use of stock reduces operating cost, and helps make more efficient use of time. The ability to pull from stock to mount productions is now being modeled for our students. The following are productions that relied heavily on this inventory to provide a strong foundation to build the production. The Department now aggressively adds to the stock that began from this applied learning allocation.

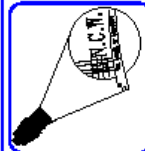


NEW CONSTRUCTION

NOTES:
 ALL FLAT CONSTRUCTION IS UNCW STANDARD
 1 X 3 FRAMING
 CORRUGATED FASTENERS
 LAUAN SKIN
 SCAB WITH 1/4" PLYWOOD
 ALL 1 X TRUE DIMENSIONS INDICATED WITH INCH MARK

STOCK FLAT PULL SCHEDULE:
 4 @ 2' - 0" X 12' - 0"
 4 @ 3' - 0" X 12' - 0"

PLEASE CONSIDER THIS FILE
 CONCEPT THAT REPRESENTS
 ARE THE EXCLUSIVE PROPERTY
 OF THE UNIVERSITY OF NORTH
 CAROLINA AT WILMINGTON. THIS
 FILE MAY NOT BE COPIED,
 REPRODUCED, OR TRANSMITTED IN
 ANY MANNER WITHOUT THE
 EXPRESS WRITTEN PERMISSION
 OF THE UNIVERSITY OF NORTH
 CAROLINA AT WILMINGTON
 REPRESENTATIVE THEREIN.



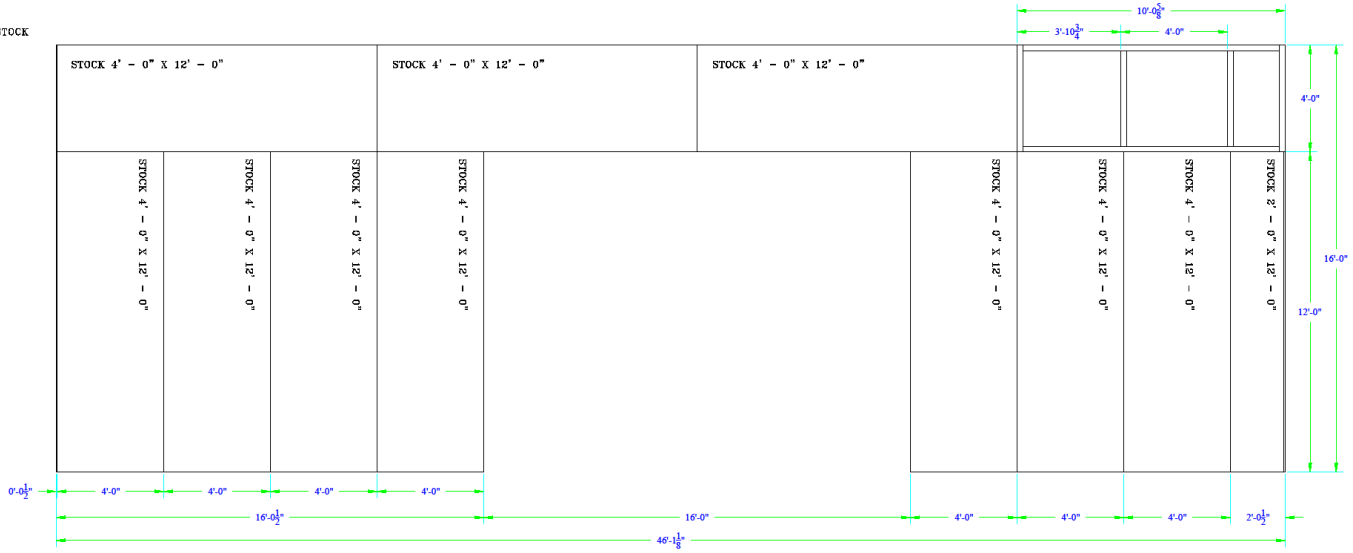
OUR LADY OF 121 ST
 AT THE UNIVERSITY OF NORTH CAROLINA AT WILMINGTON
 IN THE MAIN STAGE

REAR ELEVATION WALLS D, E & H
 DIRECTOR: WRENT
 DESIGN: LVTY
 PROJECT: BOWEN
 DRAWING: LVTY
 DATE: 12/10/09

SHEET # 20
 OF
 REVISIONS



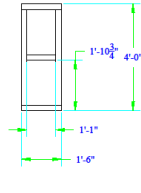
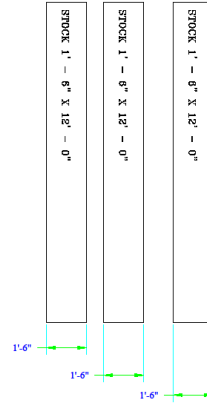
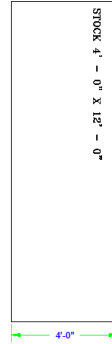
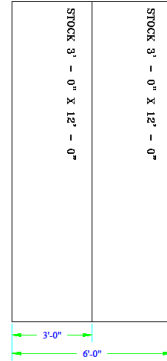
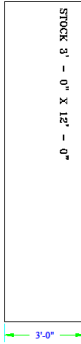
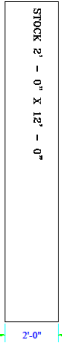
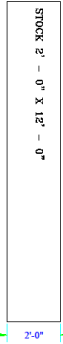
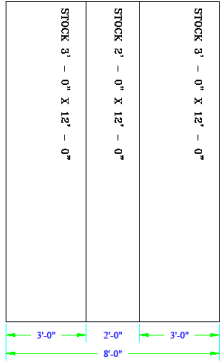
ALL NEW FLAT CONSTRUCTION IS TYPICAL STOCK
STYLE FABRICATION.



STOCK FLAT PULL SCHEDULE:

- 12 @ 4' - 0" X 12' - 0"
- 6 @ 3' - 0" X 12' - 0"
- 4 @ 2' - 0" X 12' - 0"
- 3 @ 1' - 6" X 12' - 0"

FALSE PROSCENIUM NEEDS A 1/2" STRIP ADDED TO EACH END OF UNIT



THE BOOK OF LIZ

AT THE UNIVERSITY OF NORTH CAROLINA AT WILMINGTON

IN THE SKO THEATRE

PROSCENIUM STOCK AND BUILT FLATS

DIRECTOR: WAGENSELLER
SCENIC DESIGN: BUCK
LIGHTING DESIGN: BUCK
TECHNICAL DIRECTOR: LYDY
DRAFTSMAN: LYDY

SCALE: 1/2" = 1'-0" DATE: 08/16/10

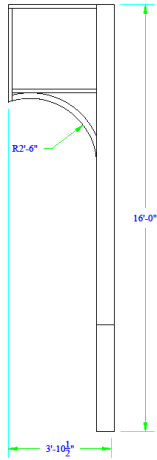
SHEET # 08
OF
REVISIONS

THESE DRAWINGS AND THE CONCEPTS THEY REPRESENT ARE THE PROPERTY OF THE UNIVERSITY OF NORTH CAROLINA AT WILMINGTON. THEY ARE NOT TO BE REPRODUCED OR RE-USED IN ANY MANNER WITHOUT THE WRITTEN PERMISSION OF THE UNIVERSITY OF NORTH CAROLINA AT WILMINGTON OR A REPRESENTATIVE THEREIN.

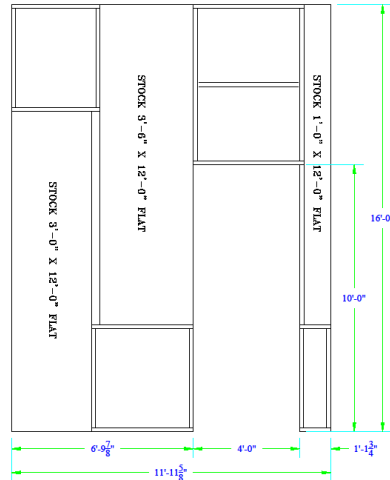




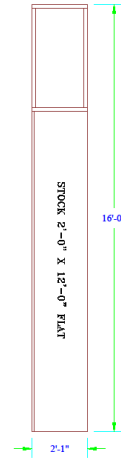
ALL NEW FLAT CONSTRUCTION TO BE BUILT FROM SHEETS #19 & 20



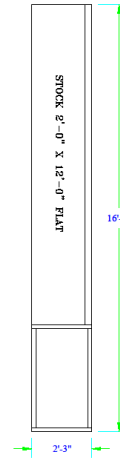
WALL E
 BUILD 2
 JOIN FLATS WITH 1X3 X 10 1/2" RIBS
 FACE DOWN STAGE EDGE LAUAN
 FACE ARC WITH 1/2" MASONITE
 SKIN ONSTAGE FLAT ONLY



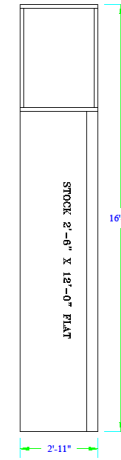
WALL F



WALL G



WALL H



WALL I

THESE DRAWINGS AND THE CONCEPTS THEY REPRESENT ARE THE PROPERTY OF THE UNIVERSITY OF NORTH CAROLINA AT WILMINGTON. THEY ARE NOT TO BE REPRODUCED OR RE-USED IN ANY MANNER WITHOUT THE WRITTEN PERMISSION OF THE UNIVERSITY OF NORTH CAROLINA AT WILMINGTON OR A REPRESENTATIVE THEREIN.



ARCADIA
 AT THE UNIVERSITY OF NORTH CAROLINA AT WILMINGTON
 IN THE MAIN STAGE THEATRE

FLAT LAYOUT WALLS A - I	DIRECTOR: VINCENT BUCK	DATE 11/4/11
	SCENE DESIGN: BUCK	
	LIGHTING DESIGN: BUCK	
	TECHNICAL DIRECTOR: LLOYD	
	MANAGER: LLOYD	
	SCALE 1/2"=1'-0"	

SHEET # 15
OF
REVISIONS
01/22/11 MAX

