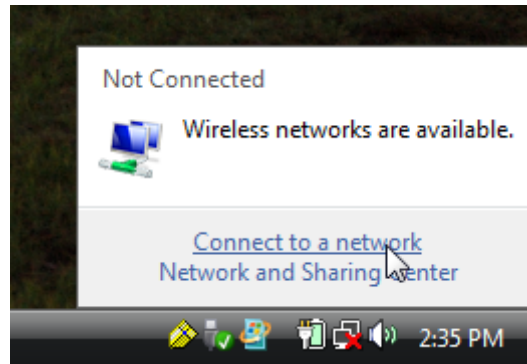
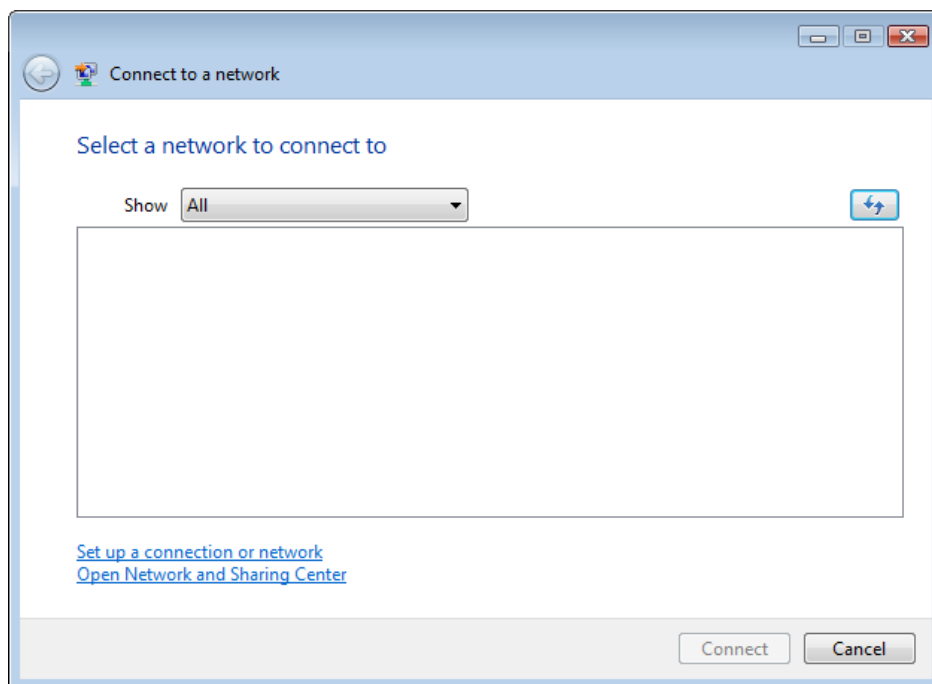


Configuring WEP for Windows Vista

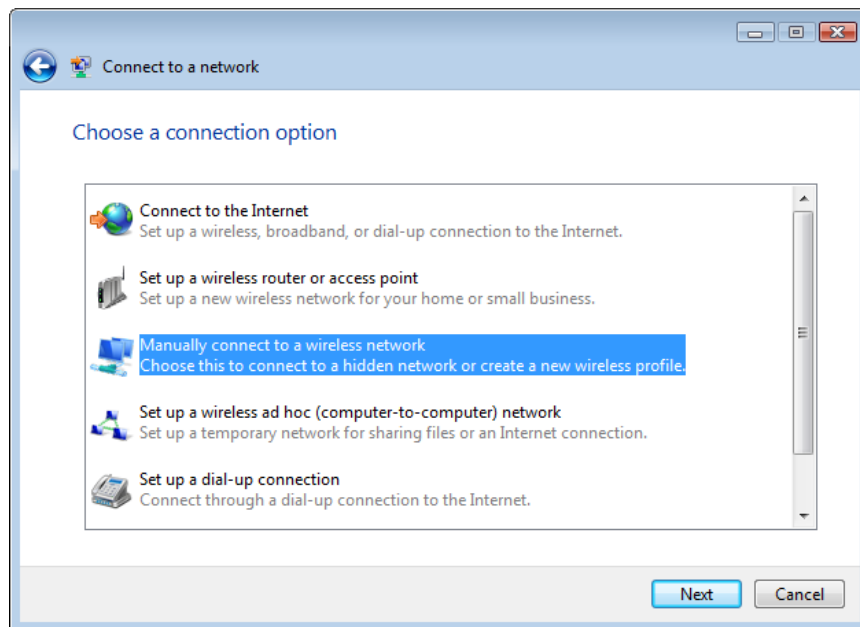
1. To begin configuring WEP encryption for your PC, you will need to modify the properties of your wireless network connection. To do this, left-click on the wireless network connection icon in the clock tray and select "Connect to a network"



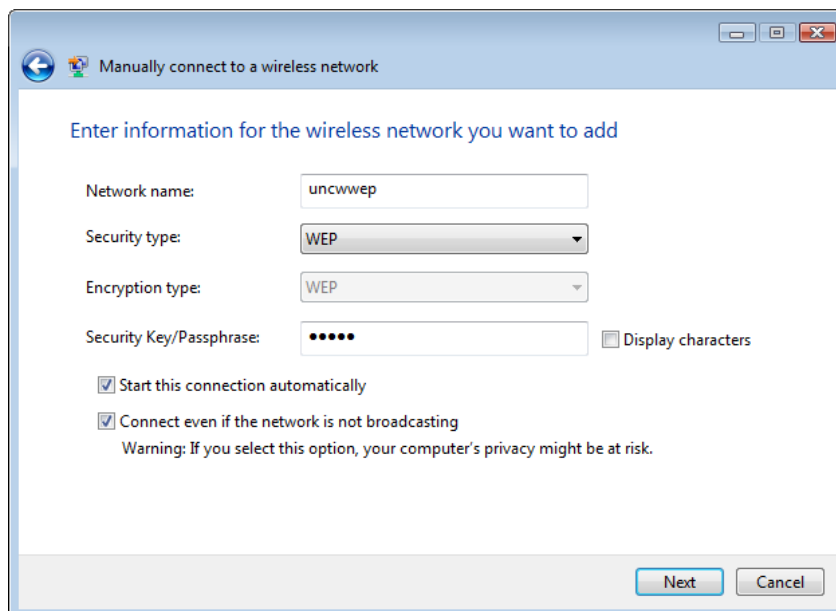
2. On the dialog box that opens, left-click "Set up a connection or network"



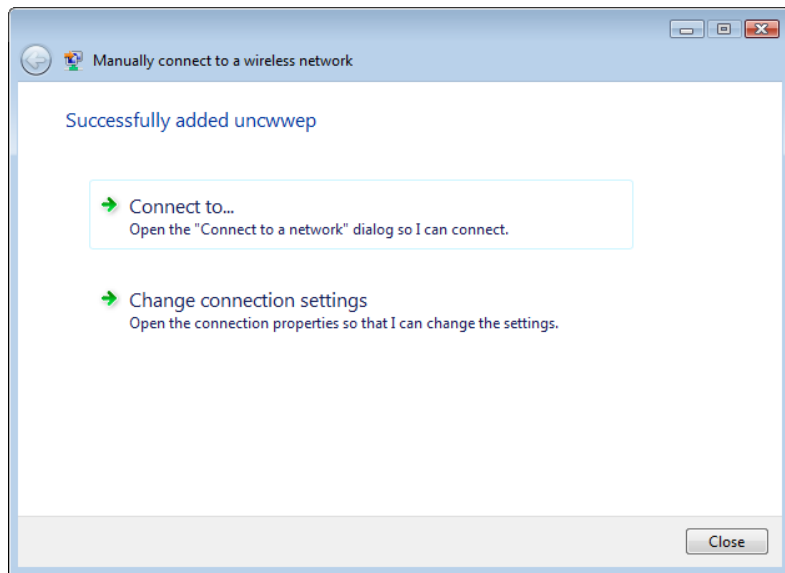
3. In the window that appears, choose “Manually connect to a wireless network”, and then click “Next”



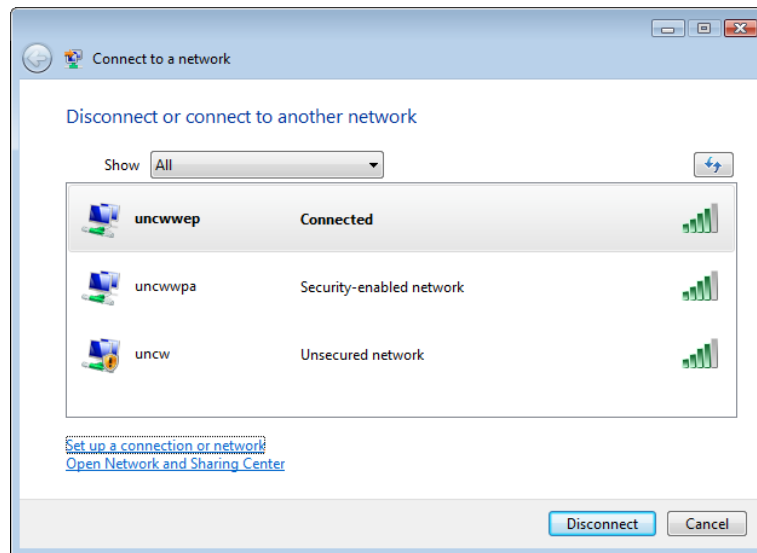
4. On this box, use the following information:
 - a. For *Network name*, type “uncwwep”
 - b. For *Security type*, choose “WEP”
 - c. For *Security Key/Passphrase*, type “chawk”
 - d. Check “Connect even if the network is not broadcasting”
 - e. Click “Next”



5. Choose "Connect To"



6. At this point your computer will connect to the wireless network. It may take a few moments before the connection becomes active. It will say "Connected" in bold once it is.



You are now successfully connected to UNCW's wireless network and are protected with WEP encryption! You may now open Internet Explorer and register your PC on the network.