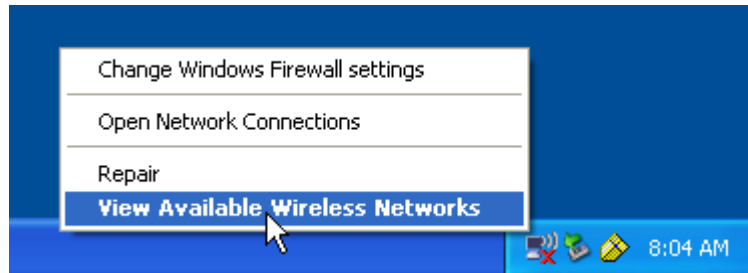
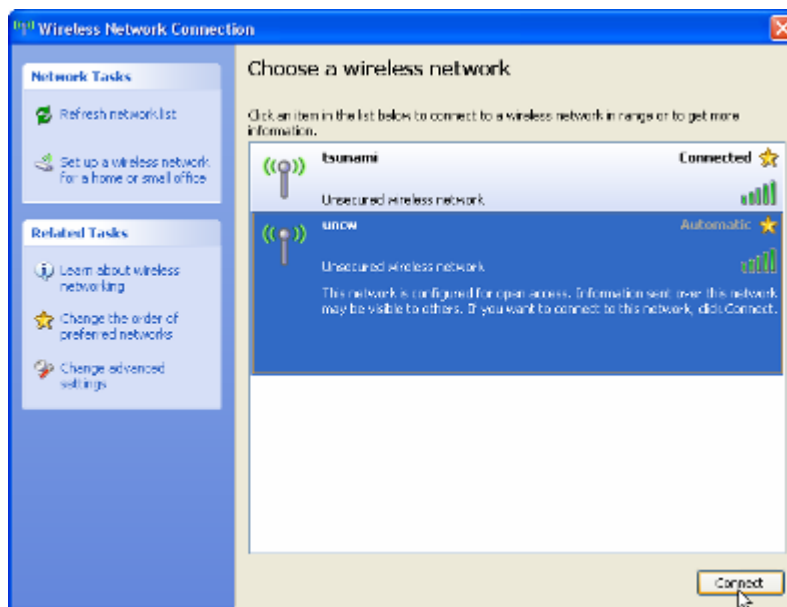


## Connecting to the UNCW Wireless Network

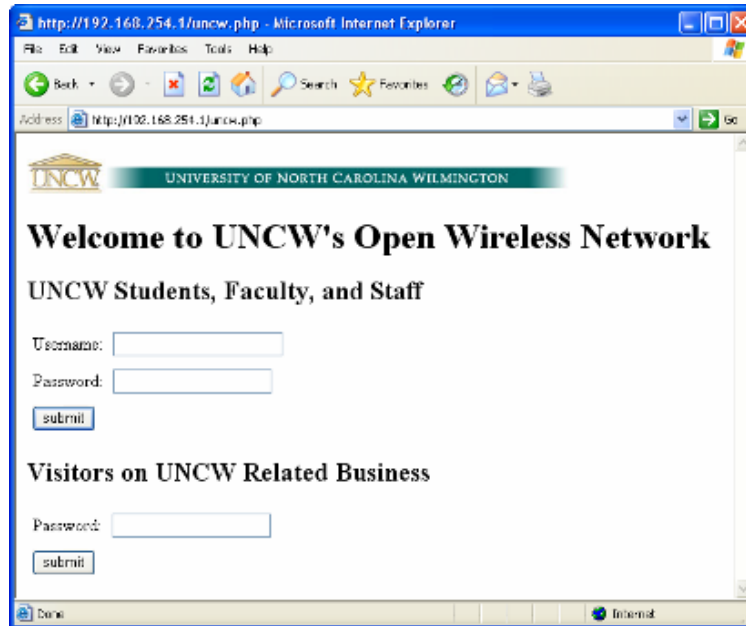
1. Right-click on the "Wireless Network Connection" in the clock tray and select "View Available Wireless Networks" from the pop-up menu.



2. From the list, select "uncw" and press the "Connect" button.



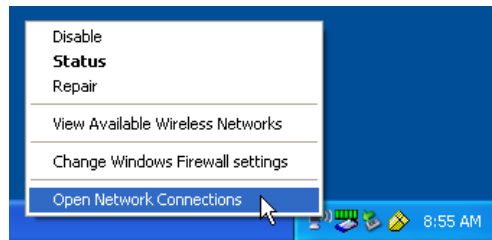
3. Windows will present you with a progress bar while it connects you to the network. When complete, the network will be listed as "Connected" in the wireless network list. The wireless network icon in the clock tray will also change from having a red "X" attached to it to having an icon of a PC with a series of waves emitting from it. Hovering the mouse over the icon will provide a tool tip indicating that the PC is connected and the signal strength of the connection.
4. Open Internet Explorer. At this point you will be prompted to enter your domain username and password or your visitor password. Enter your logon credentials and then press the "Submit" button.



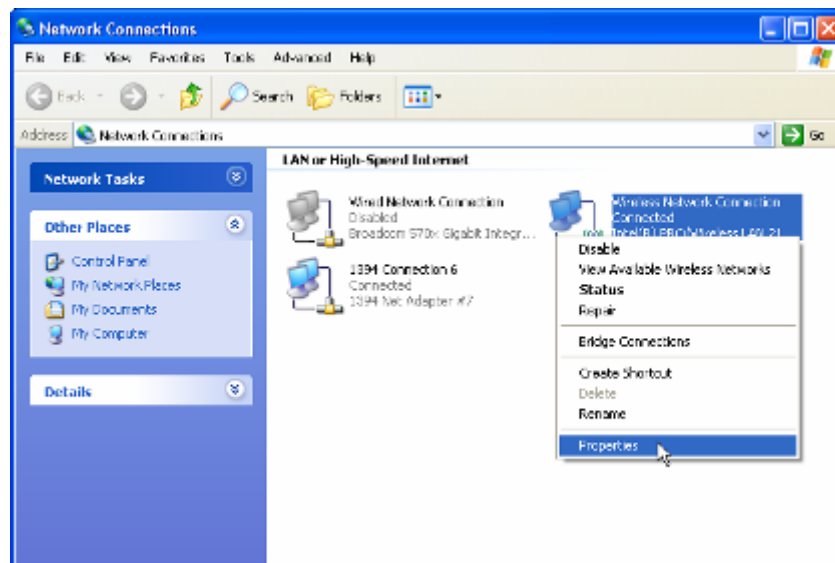
5. Depending on your status with the University, you will see one of two screens: either a screen containing instructions for configuring WEP (Students, visitors) or a screen with both WEP and WPA instructions (Faculty and Staff).

## Configuring WEP for Windows XP (For all UNCW Faculty, Staff, Students and Visitors)

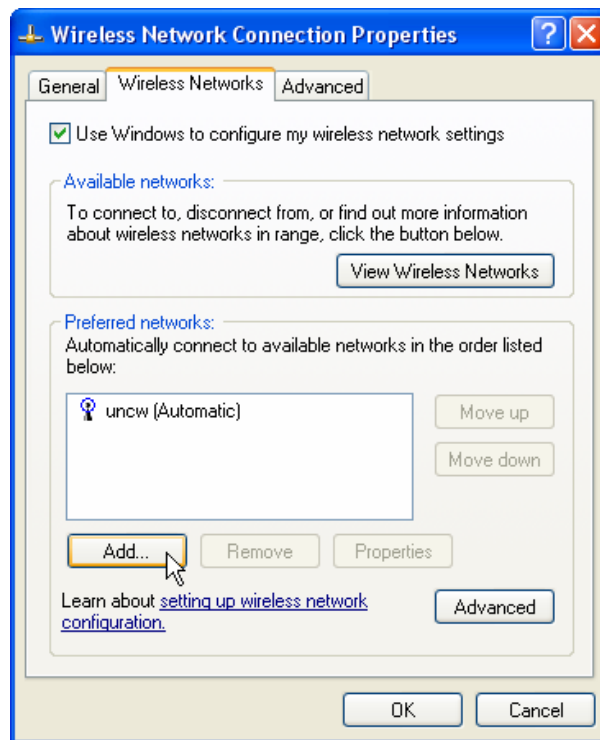
1. To begin configuring WEP encryption for your PC, you will need to modify the properties of your wireless network connection. To do this, right-click on the wireless network connection icon in the clock tray and select "Open Network Connections."



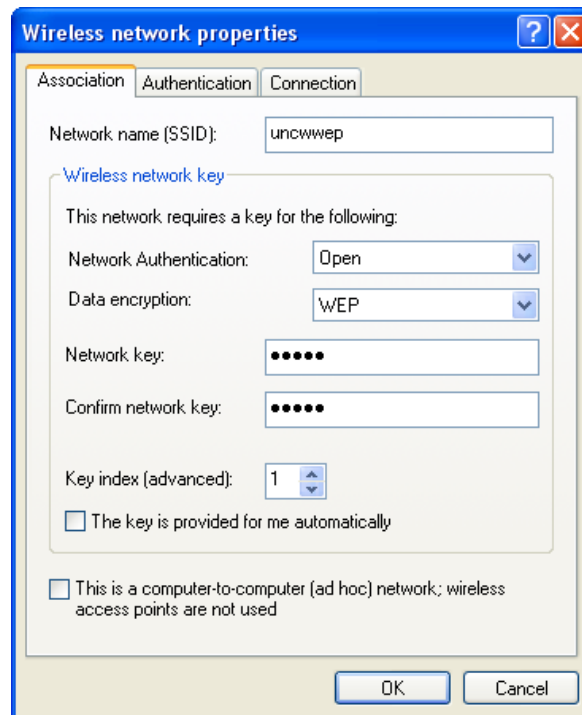
2. Right-click on your Wireless Network Connection and select "Properties" from the list.



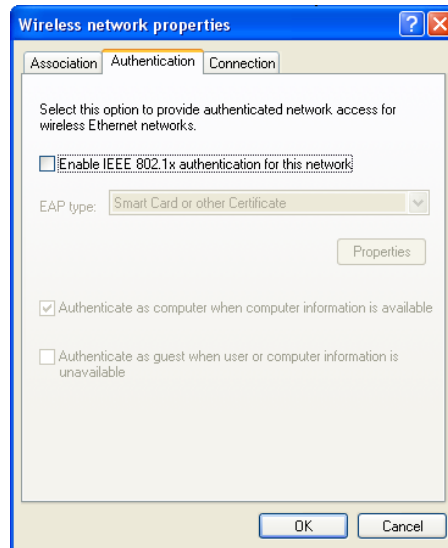
3. In the window that appears, click the "Wireless Networks" list and then click the "Add" button.



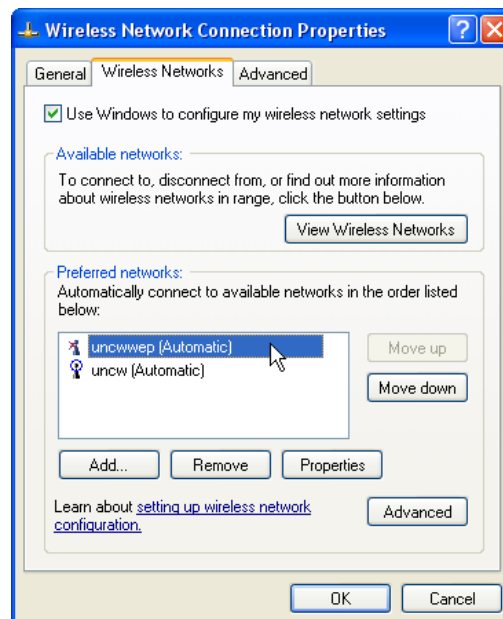
4. You will then be presented with the "Wireless Network Properties" window. On the "Association" tab, in the "SSID" field, type *uncwwep*. In the drop-down menu across from "Network Authentication" ensure that the method selected is "Open." In the drop-down menu for "Data encryption" select "WEP." Then, clear the checkbox for "The key is provided for me automatically." In the "Network key" and "Confirm network key" fields, type in the password *hawk*. Ensure that "1" is selected in the "Key index" menu. Your window should look identical to the one below.



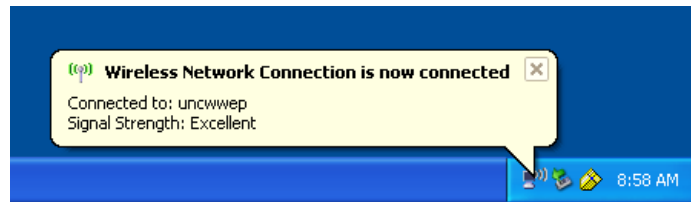
- Next, click on the "Authentication" tab. Ensure that the checkbox next to "Enable IEEE 802.1x authentication for this network" is cleared. Your window should look identical to the one below.



- Click the "OK" button to close the Wireless Network Properties window. You will be taken back to the Wireless Network Connection Properties window and you will now see "uncwwep" listed under the preferred network list as shown below. To ensure ease of use, you may remove the network "uncw" from the list by clicking it once to highlight it and then click the "Remove" button. This will force your PC to automatically connect the WEP encrypted network whenever a signal is present.



7. Windows should display a tool tip balloon with a message indicating that you have successfully connected to the uncwwep network.



8. Hovering your mouse over the wireless network connection in the clock tray will also display a message containing the network status.



9. You are now successfully connected to UNCW's wireless network and are protected with WEP encryption. You may now open Internet Explorer and register your PC on the network. For information detailing this process, please refer to this document's section entitled "Network Registration."