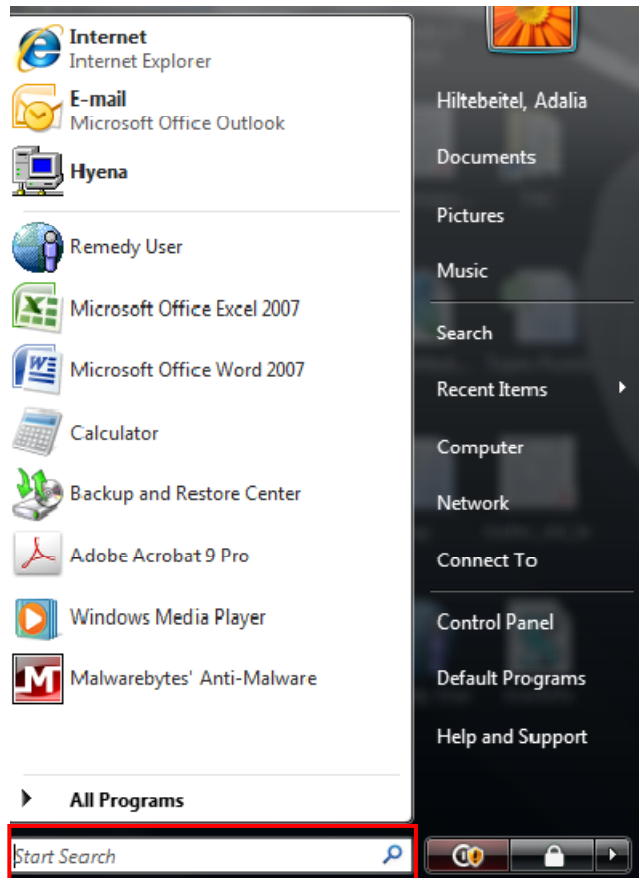




Department of Client Technology Services
Information Technology Systems Division

Connecting to Sammy
Compatible with Windows Vista
Updated October '09



Click on the Windows “Start” button in the bottom left corner of your screen.
In the “Start Search” box, type in \\sammy.

If you know the folder you are going to, you can type in the direct path to the folder, for example
\\sammy\departments\department-name or
\\sammy\people\username

If you have any problems or questions about these instructions, please feel free to contact the Technology Assistance Center (TAC) at (910) 962-4357 or at tac@uncw.edu

TAC 962-4357
Technology Assistance Center
Information Technology Systems Division