

TealWare: Your Software Anywhere

Complete Guide

TealWare is your way of accessing software from anywhere. Whether you are on or off campus, all that is needed is an internet connection and a workstation with a web browser. Once logged in you will have access to much of the software that you are accustomed to using in a campus computer lab.

Install the plug-in which can be found here: www.uncw.edu/tealware/info.

There is a different plug-in for Mac and Windows. Choose the one for your computer and install this simple plug-in.

Access software on TealWare by typing in <https://tealware.uncw.edu> in an internet browser such as Internet Explorer or Firefox.

Log on with your UNCW e-mail credentials.

Use any of the software that is listed. Note that UNCW community members will have different permissions to software that is hosted on TealWare depending on license agreements. You will only see software listed that you have permissions to.

Examples:

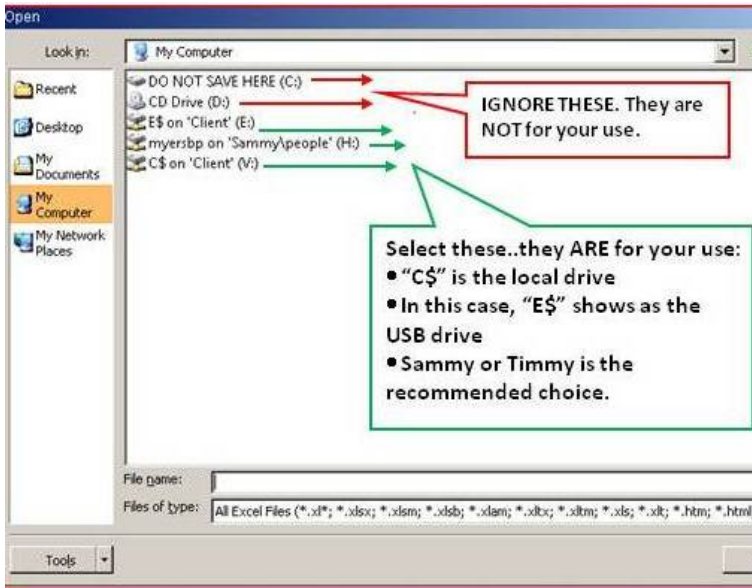
- 1 The entire campus has an agreement with Maple so everyone will see this software in their list.
- 2 The music department may purchase 10 concurrent licenses for specialty software that their faculty members need. Only those faculty members will see this software in their list.

Print by using your locally installed printer or iPrint.

Request Software to be hosted on TealWare if you are faculty/staff. For information on to do this visit:

<http://www.uncw.edu/itsd/services/hardware/TealWareRequests.html>

Saving



Always select "My Computer" when using TealWare for either saving OR retrieving data. Here is an example of the folder view that you will see: From the list, choose your Sammy or Timmy file folder, a USB key or any local storage device.

Have your USB key or external storage device connected at the time of your log on to TealWare. This will ensure it will show up in the list (as shown above) when you are ready to save/retrieve.

The first time you attempt to save on Tealware, you will see this configuration panel appear. To be able to save to your USB key or local device, you must choose "Full Access". To avoid having this panel reappear in the future, choose "Never ask me again".

