

University Planning



Peer Trends and Comparisons Related to UNCW's Ten Priority Progress Measures

April 2007

Peer Institutions

Approved by the UNC Board of Governors February 2006

- Cal Poly – San Luis Obispo
- College Of Charleston
- College of New Jersey
- Humboldt State
- James Madison
- Murray State
- Northern Iowa
- Rowan
- Sonoma State
- Towson
- Truman State
- UT – Dallas
- Wisconsin – Eau Claire
- Western Washington

UNCW's Ten Progress Measures Address:

1. Student-faculty ratio
2. Student-staff ratio
3. Diversity
4. Retention and graduation rates
5. Campus housing
6. Salaries
7. Research expenditures
8. International students and study abroad
9. Endowment for scholarships
10. Alumni giving

For each progress measure...

- Where are we now?
- Are we headed in the right direction?
- How do we compare with our peers?

Progress Measures Dashboard:

Student-faculty ratio		Salaries	
Student-staff ratio		Research expenditures	
Diversity		International students	
Retention rate		Study abroad	
Graduation rate		Endowment	
Campus housing		Alumni giving	

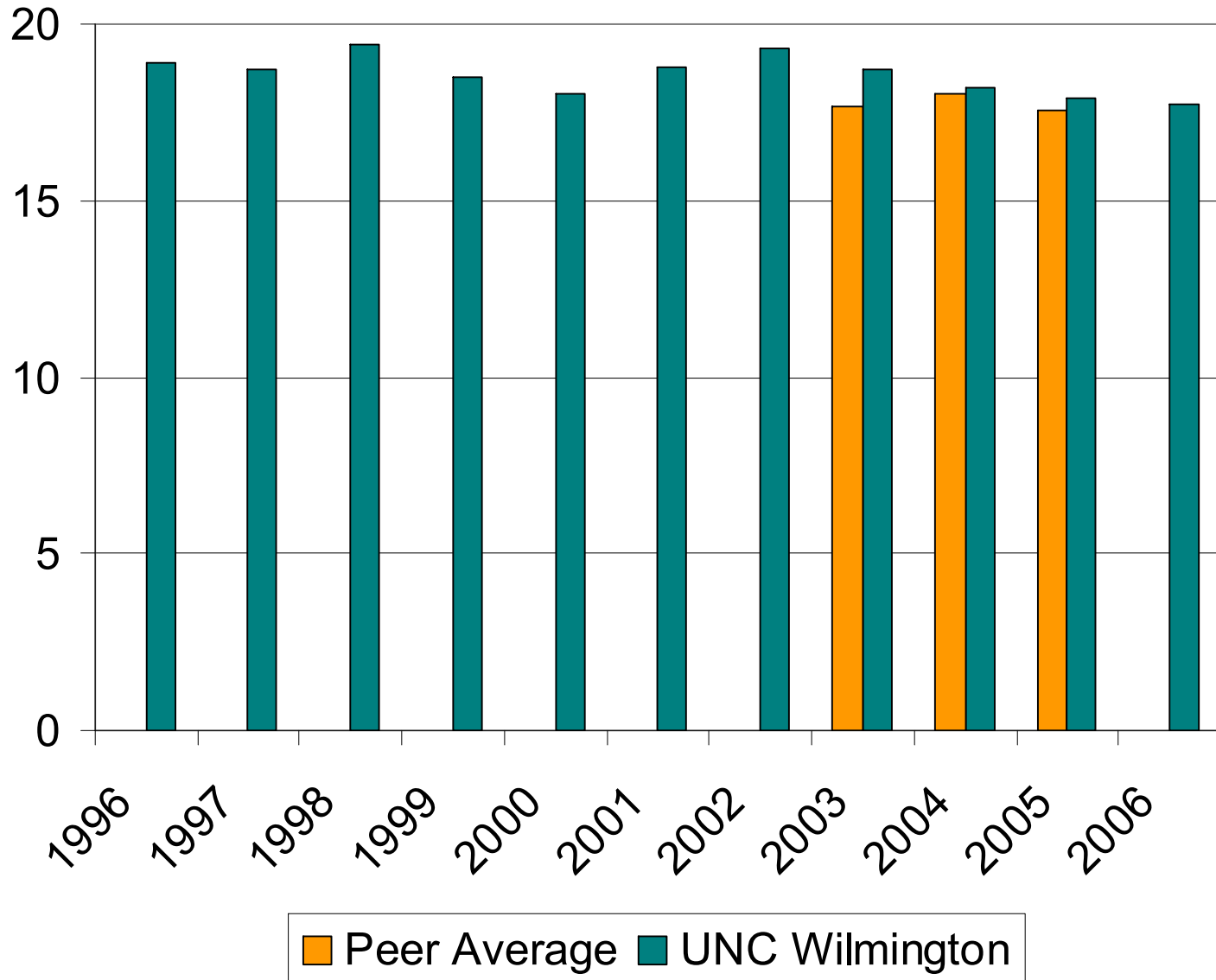
Progress Measure 1

Improve the student-faculty ratio from 18.2 to 1 in 2004-05 to 17.2 to 1 by 2007, with a long term target of 16 to 1.



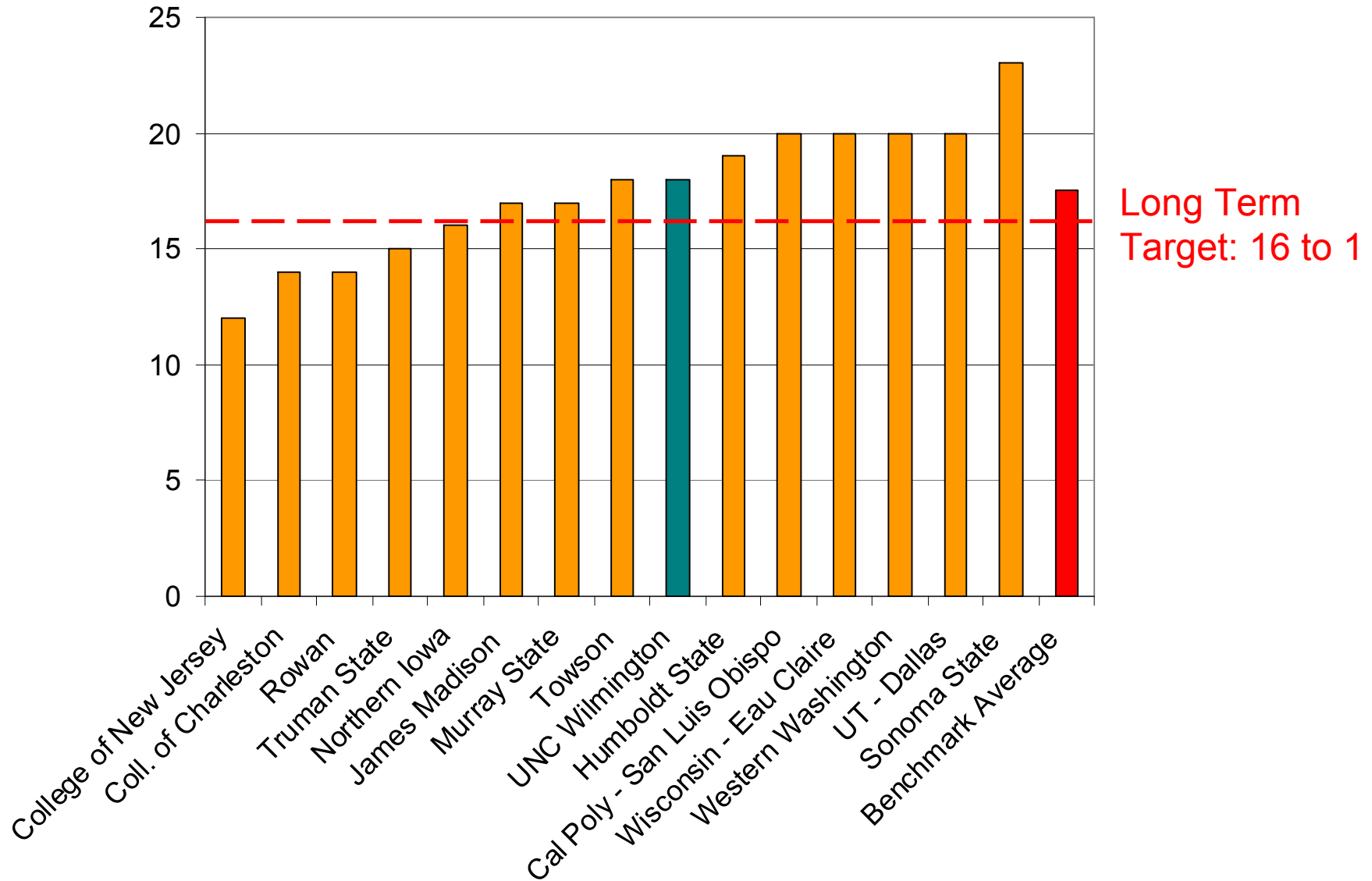
Student-Faculty Ratio Trend

(Data from US News and World Report)



Fall 2005 Student-Faculty Ratio Comparison

(Data from US News and World Report)



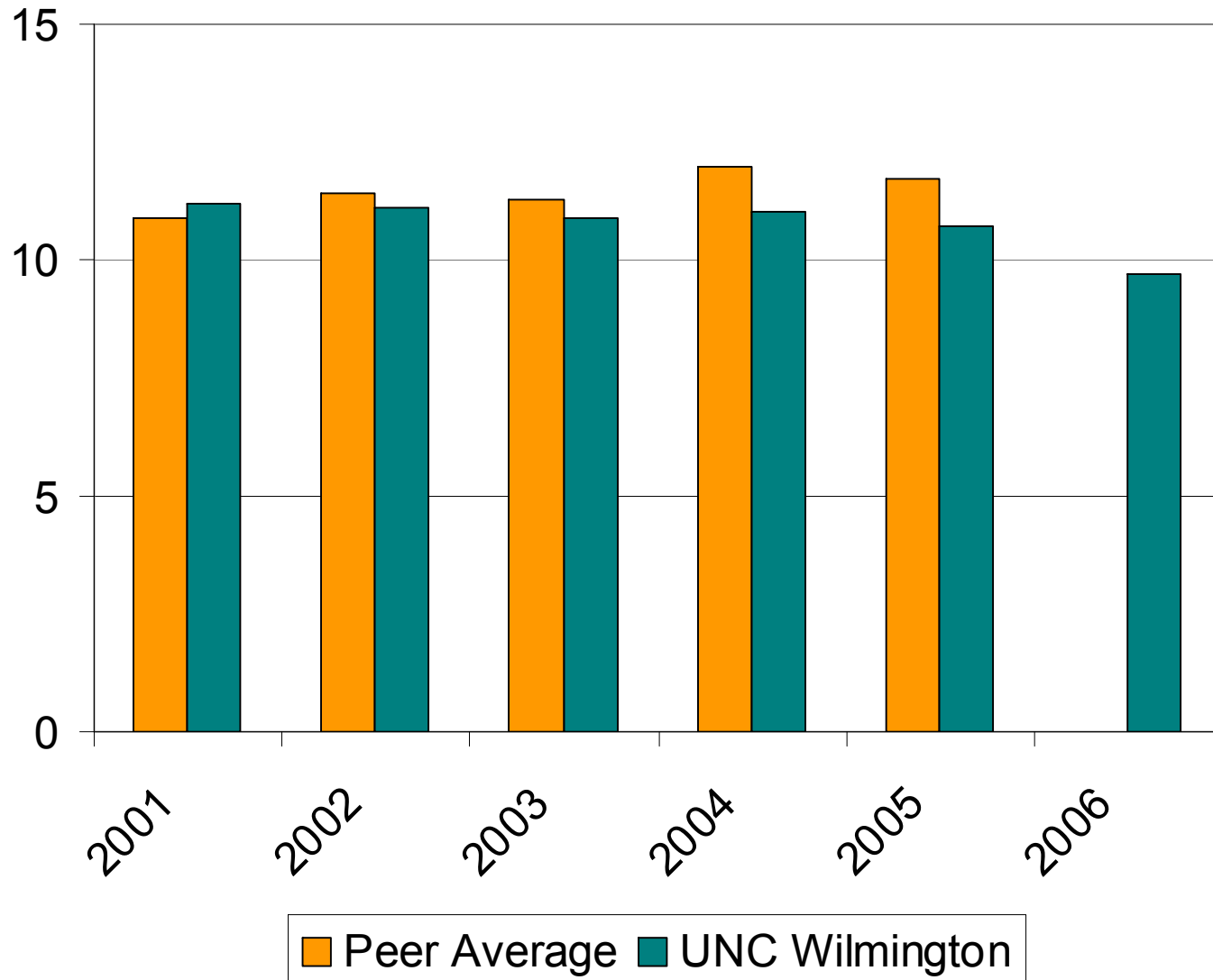
Progress Measure 2

Improve the student-staff ratio from 10.9 to 1 in 2003-04 to 10.0 to 1 by 2010.



Student-Staff Ratio Trend

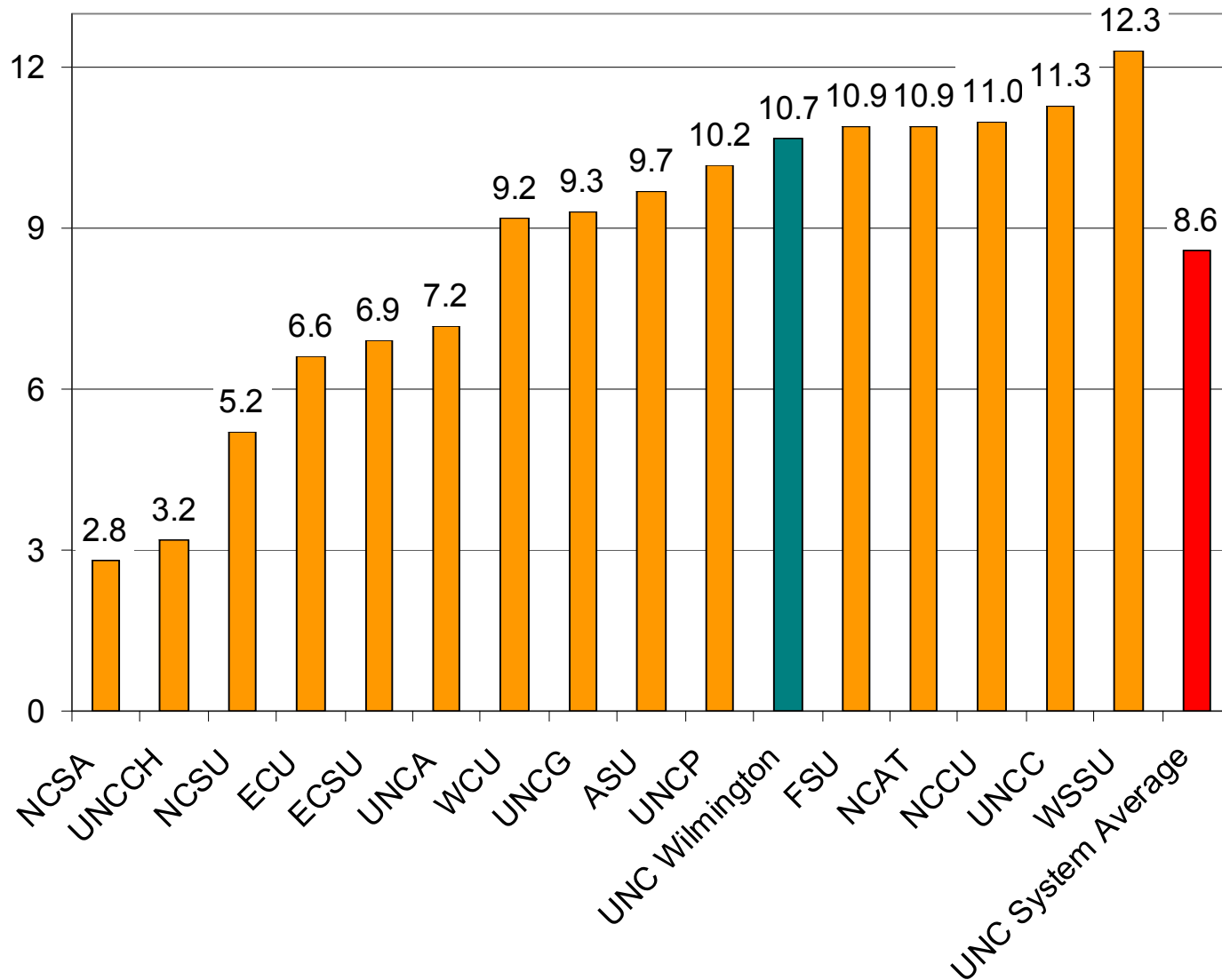
(2006 UNCW data from OIR. Other institution data from IPEDS)



Preliminary
Fall 2006
student-
staff ratio:
9.7 to 1

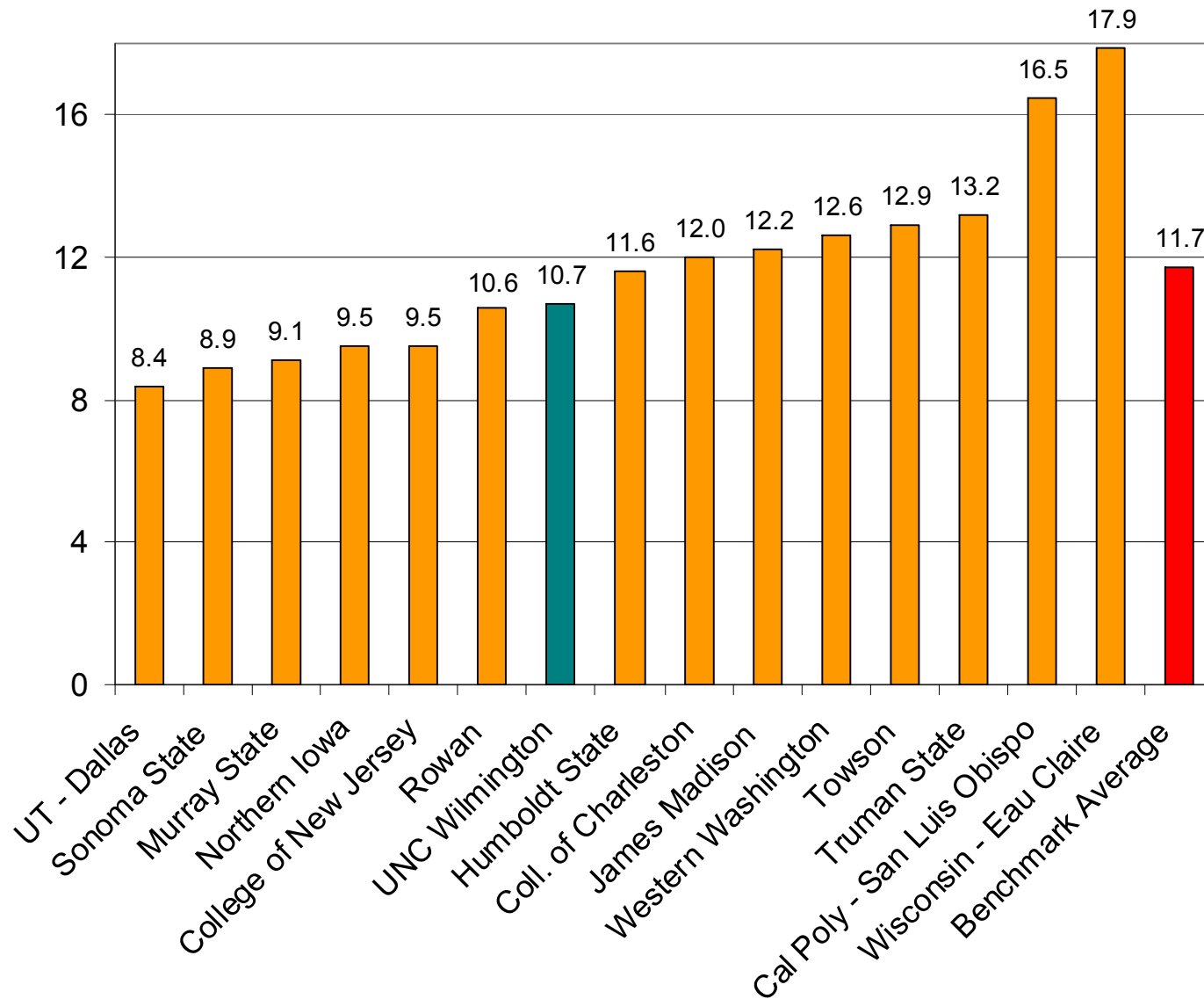
Fall 2005 Student-Staff Ratio UNC System Comparison

(Data from IPEDS)



Fall 2005 Student-Staff Ratio Peer Comparison

(Data from IPEDS)

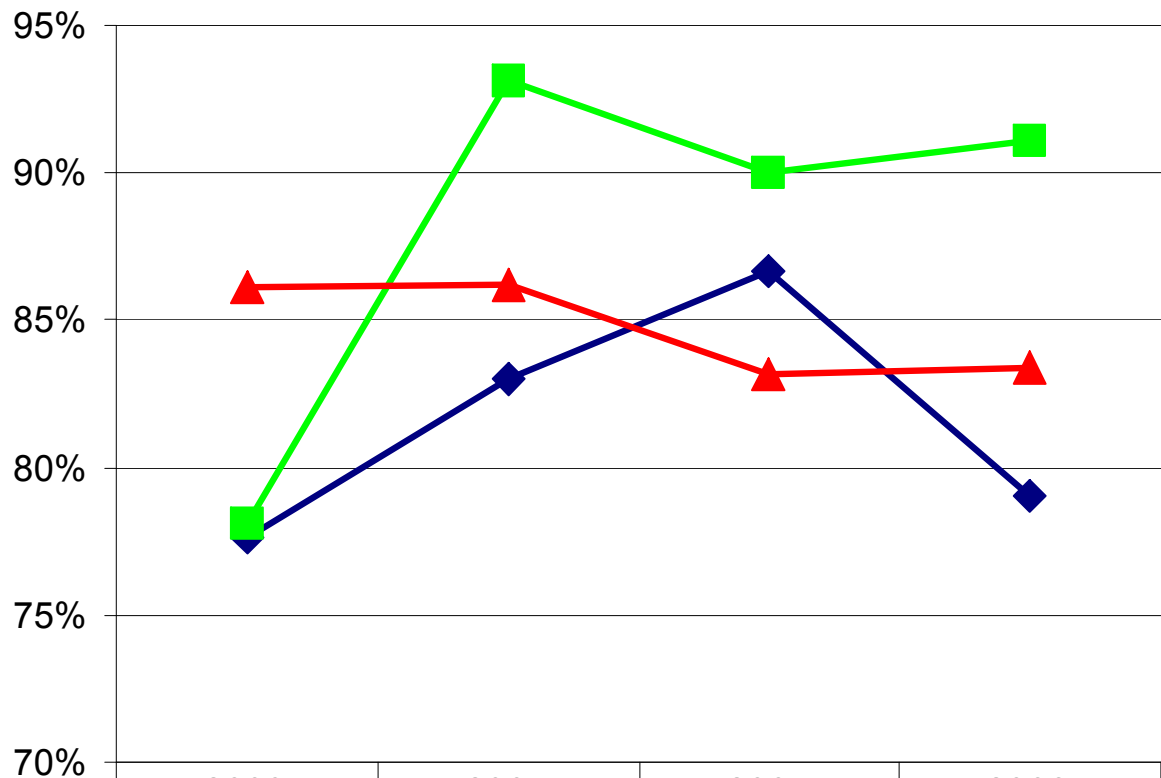


Progress Measure 3 (Part I)

Reduce disparities in retention and graduation rates between majority and minority student populations...



UNCW Freshman Retention Rate by Ethnicity



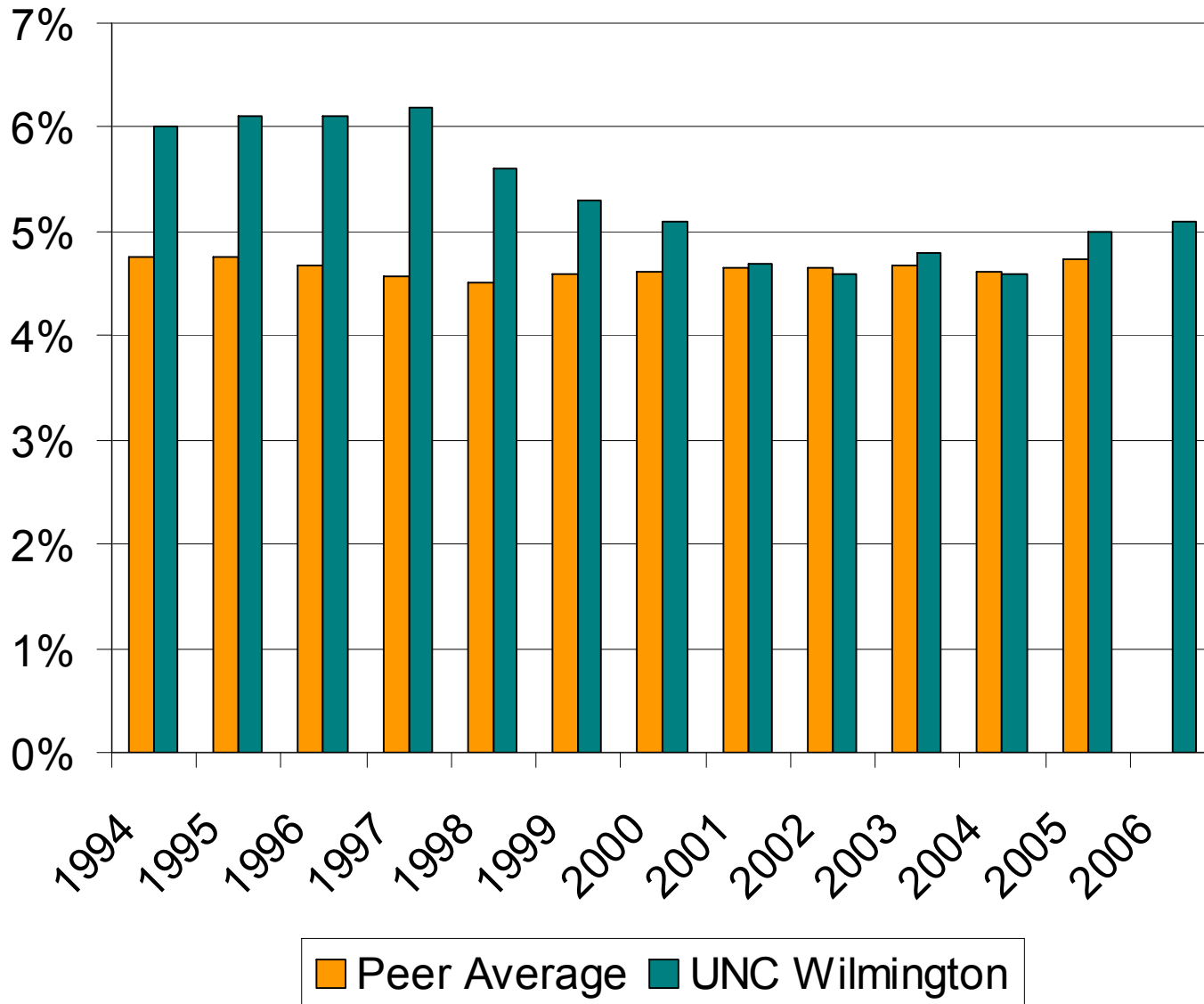
	2003	2004	2005	2006
◆ African-American	77.6%	83.0%	86.7%	79.0%
■ Hispanic	78.1%	93.1%	90.0%	91.1%
▲ White	86.1%	86.2%	83.2%	83.4%

Progress Measure 3 (Part II)

...increase the proportion of student enrollments from historically underrepresented groups to achieve a critical mass necessary to enrich the education of all UNCW students.

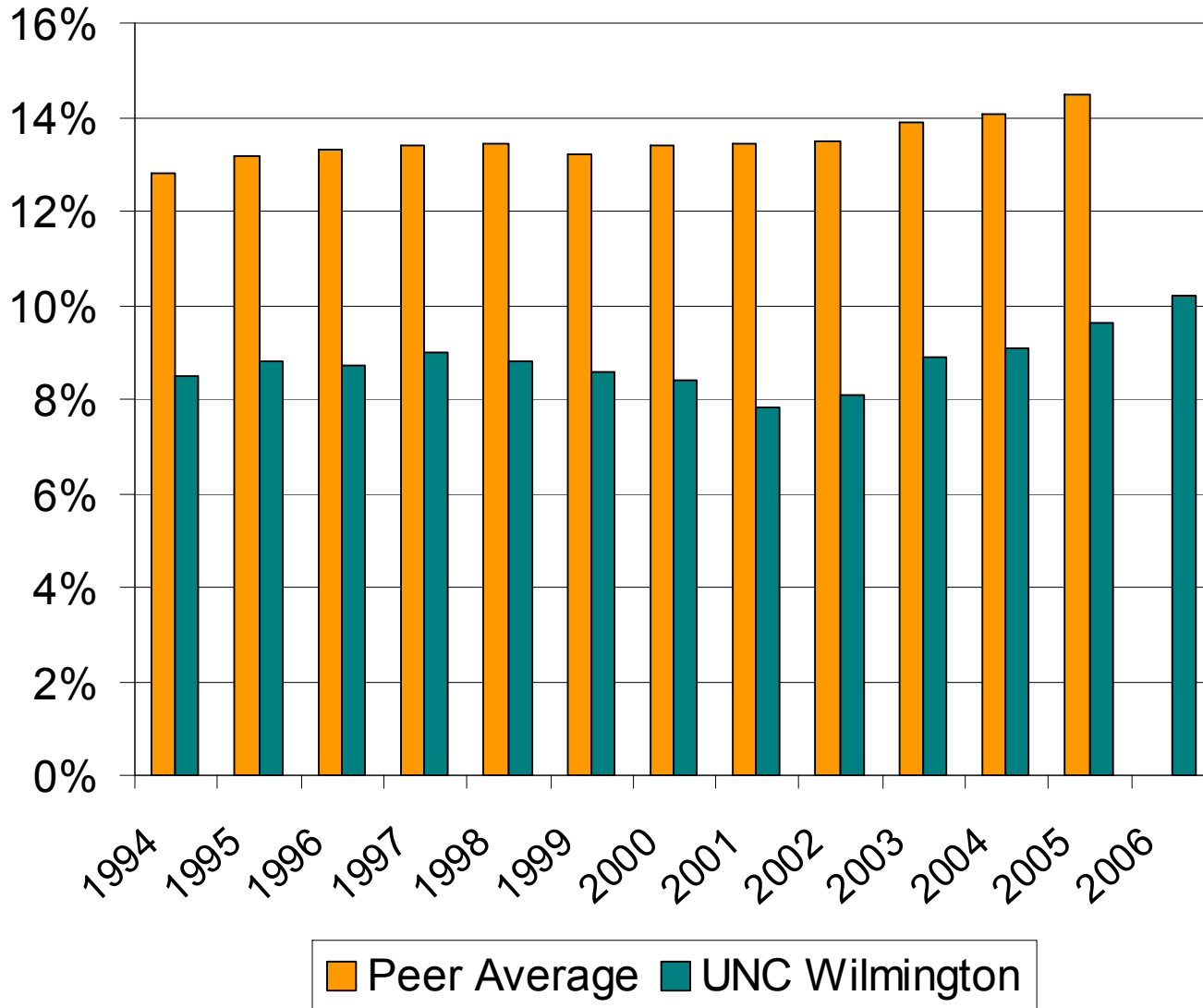


Trend: Black, Non-Hispanic Students as a Percentage of Total Enrolled (Data from IPEDS)



Fall 2006
percentage:
5.1%

Trend: Minority Students as a Percentage of Total Enrolled (Data from IPEDS)



Fall 2006
percentage:
10.2%

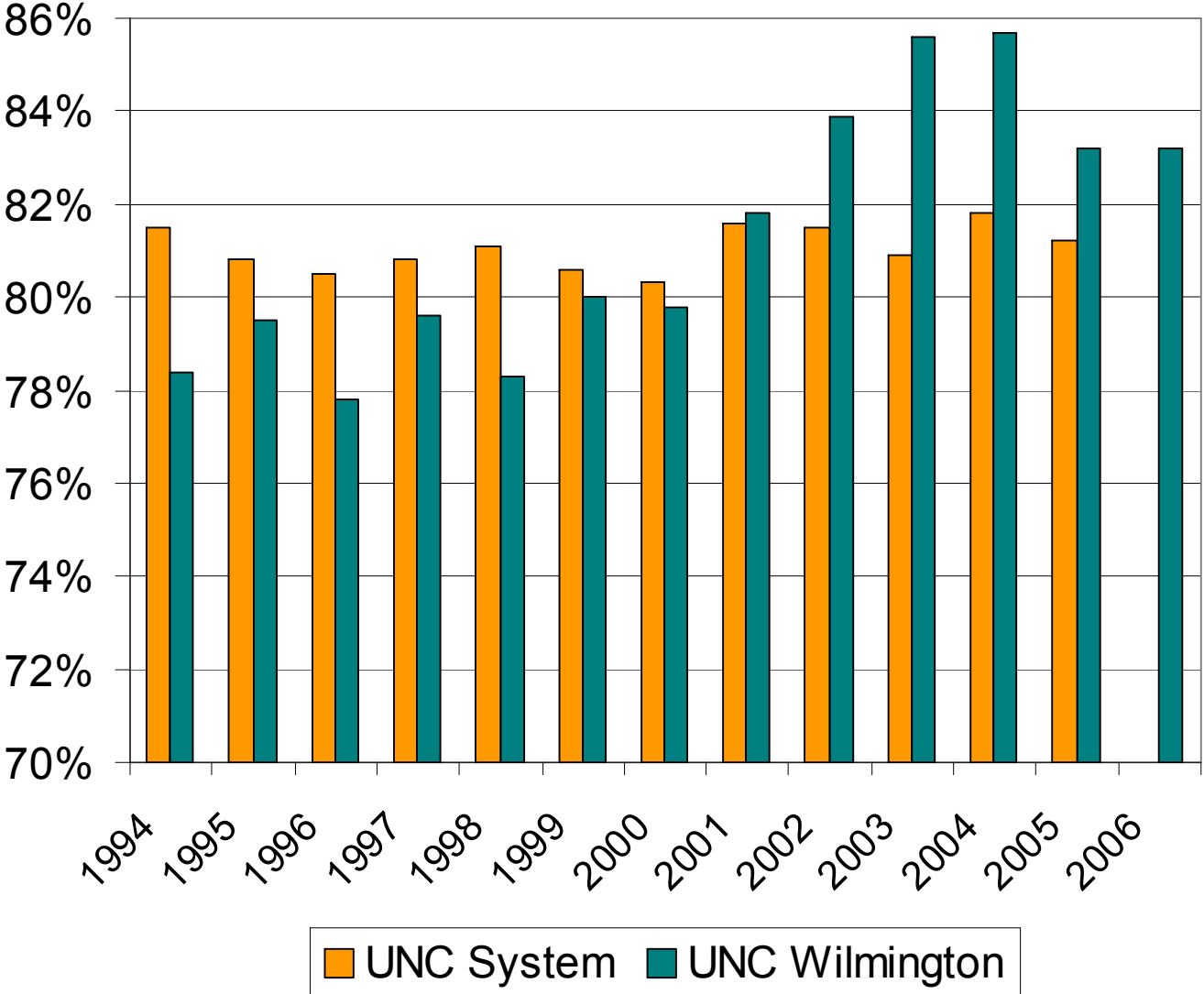
Progress Measure 4

Increase the freshman to sophomore retention rate from 85.7% in 2004-05 to 90% by 2010, and the six-year graduation rate from 61% in 2004-05 to 80% by 2015.



Freshman Retention Rate Trend

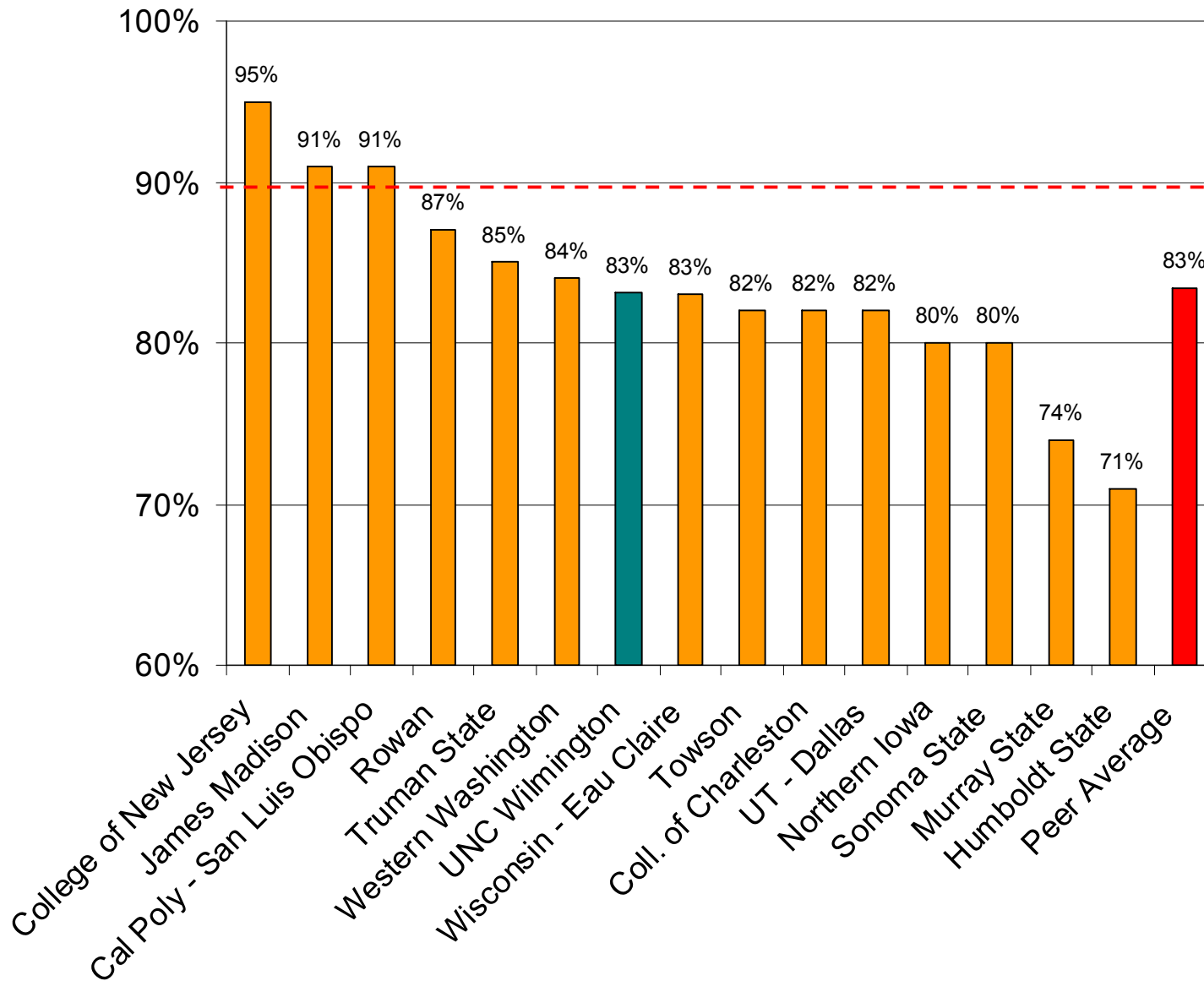
(Data from UNC System Web site)



Fall 2006
rate:
83.2%

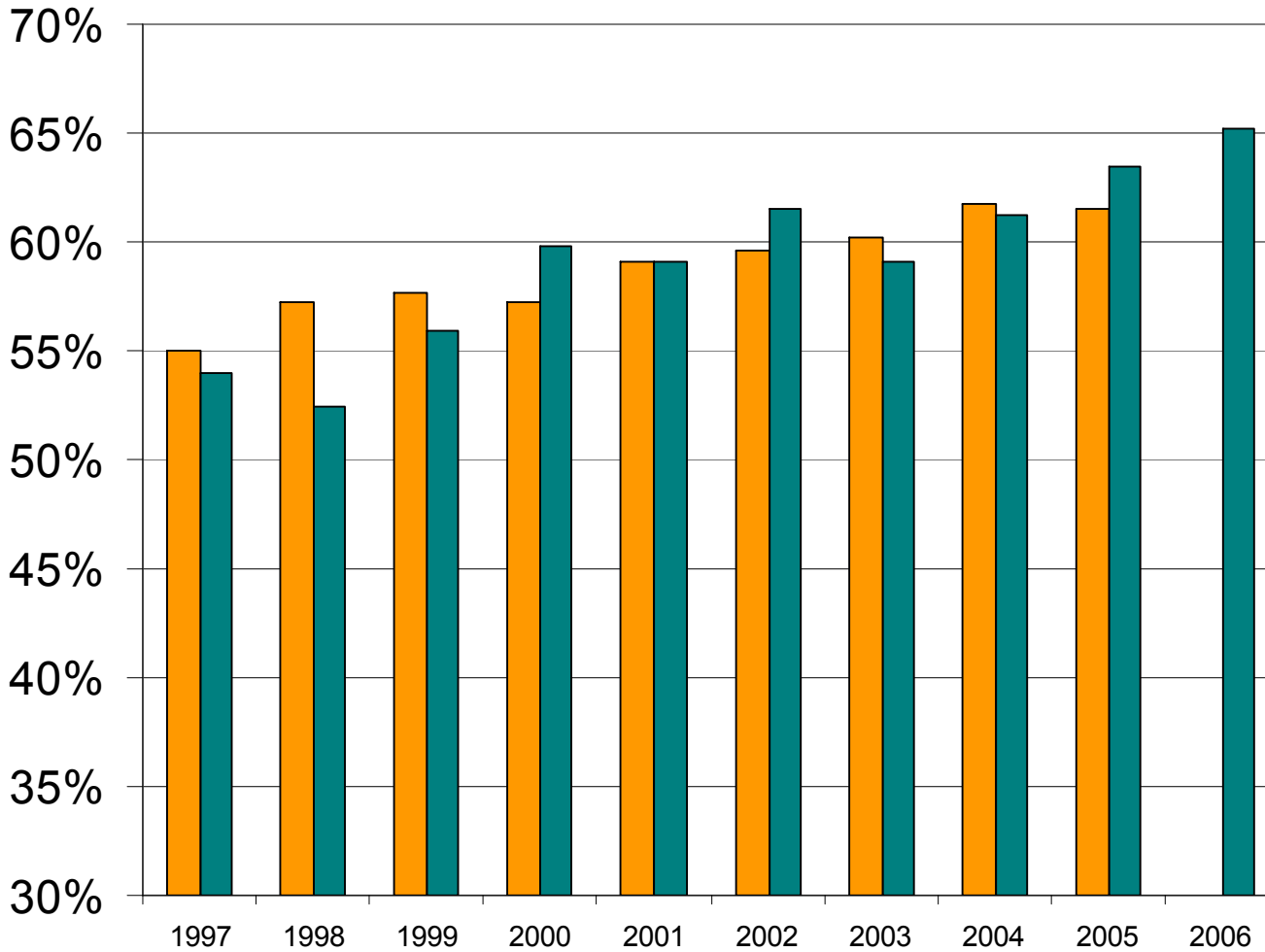
2005 Freshman Retention Rate Comparison

(Data from IPEDS)



2010
Target:
90%

Six-year Graduation Rate Trend (Data from IPEDS)



Fall
2006
rate:
65.2%

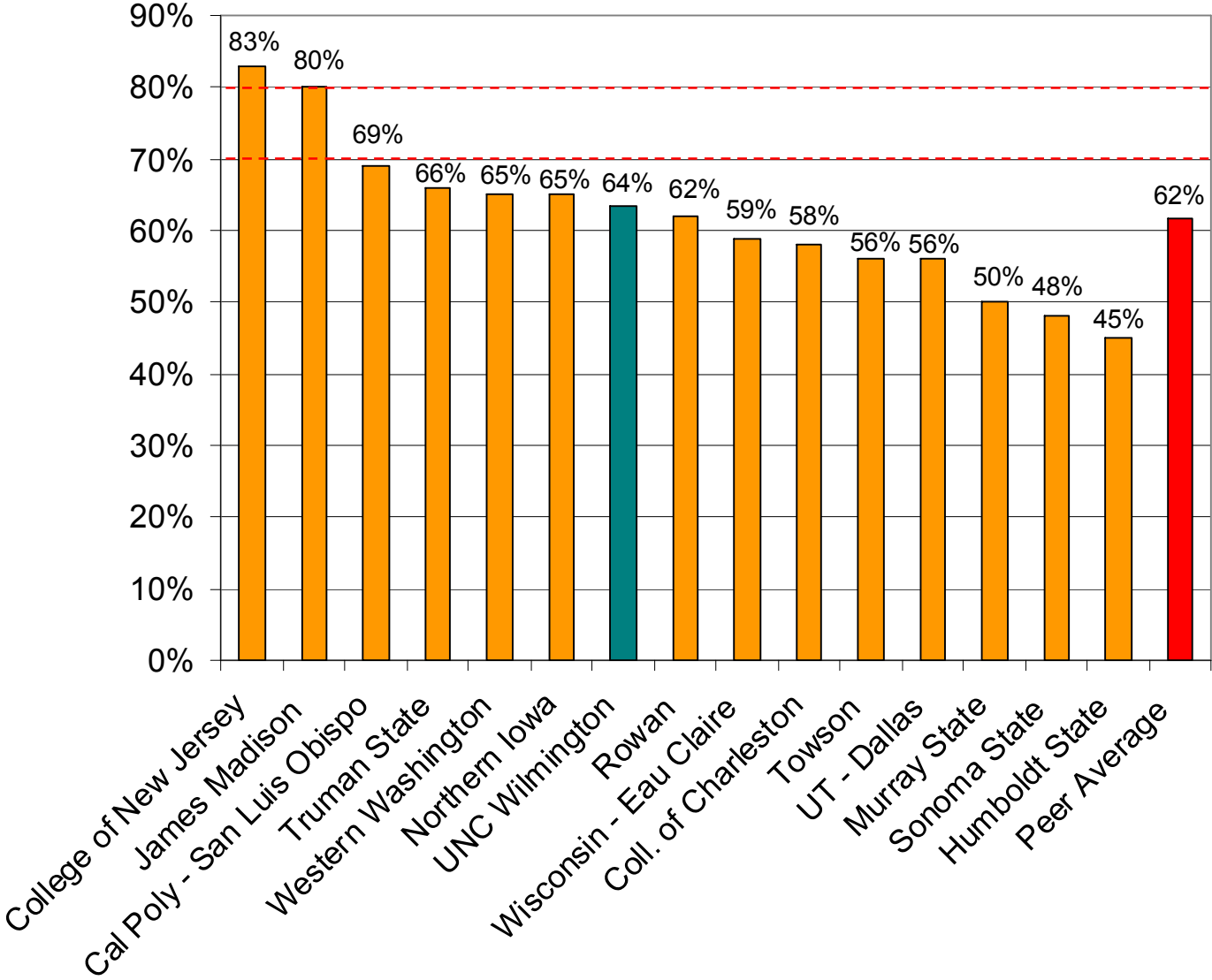
Peer Average UNC Wilmington

2005 Six-year Graduation Rate Comparison

(Data from IPEDS)

2015
Target:
80%

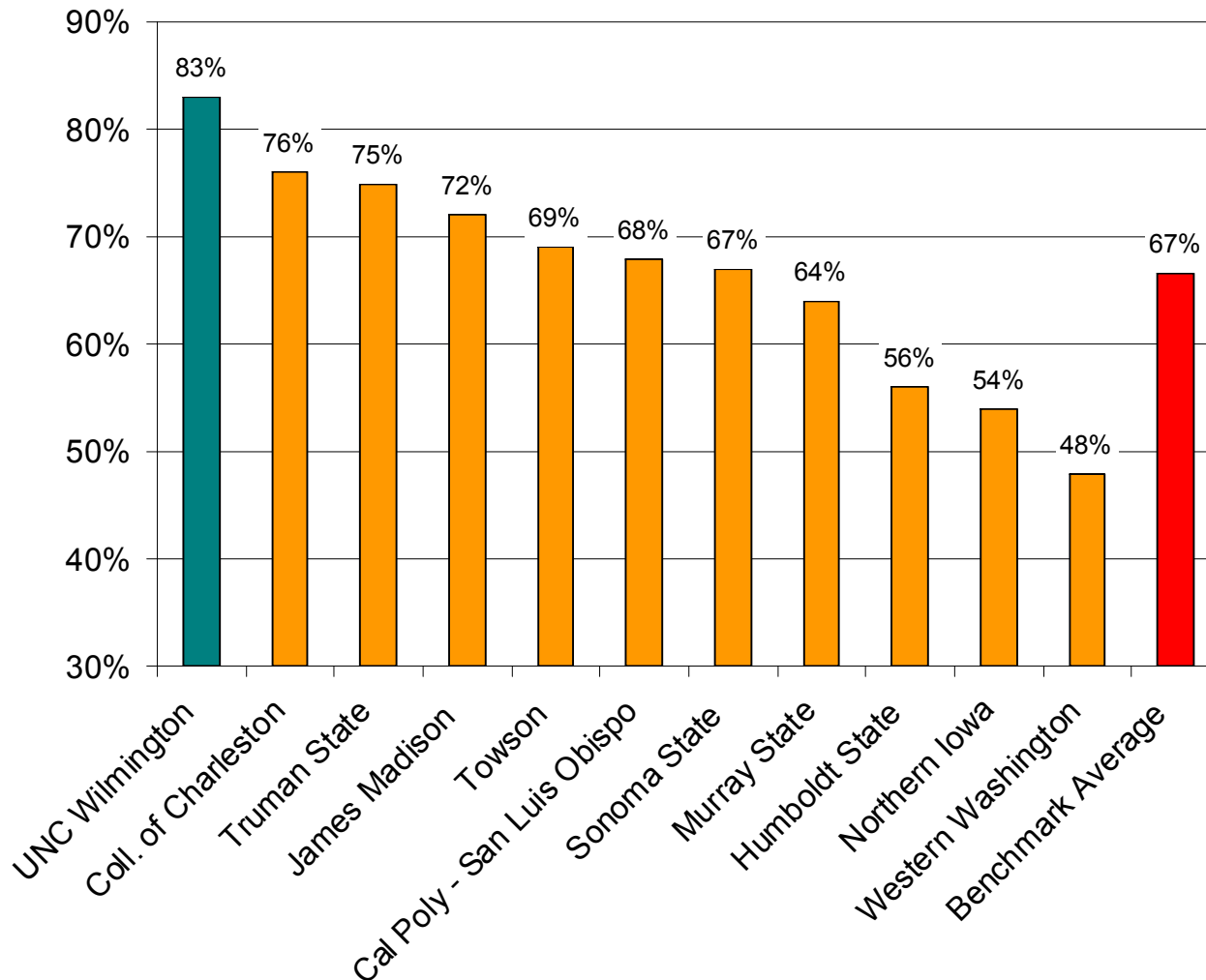
Five-year
Target:
70%



Student-Athlete 6-Year Graduation Rate

Data from 2006 NCAA Graduation Rate Report released Nov. 2006.

Division III schools College of NJ, UT-Dallas, Rowan and Wisconsin-Eau Claire had no athletes in the 1999 cohort.



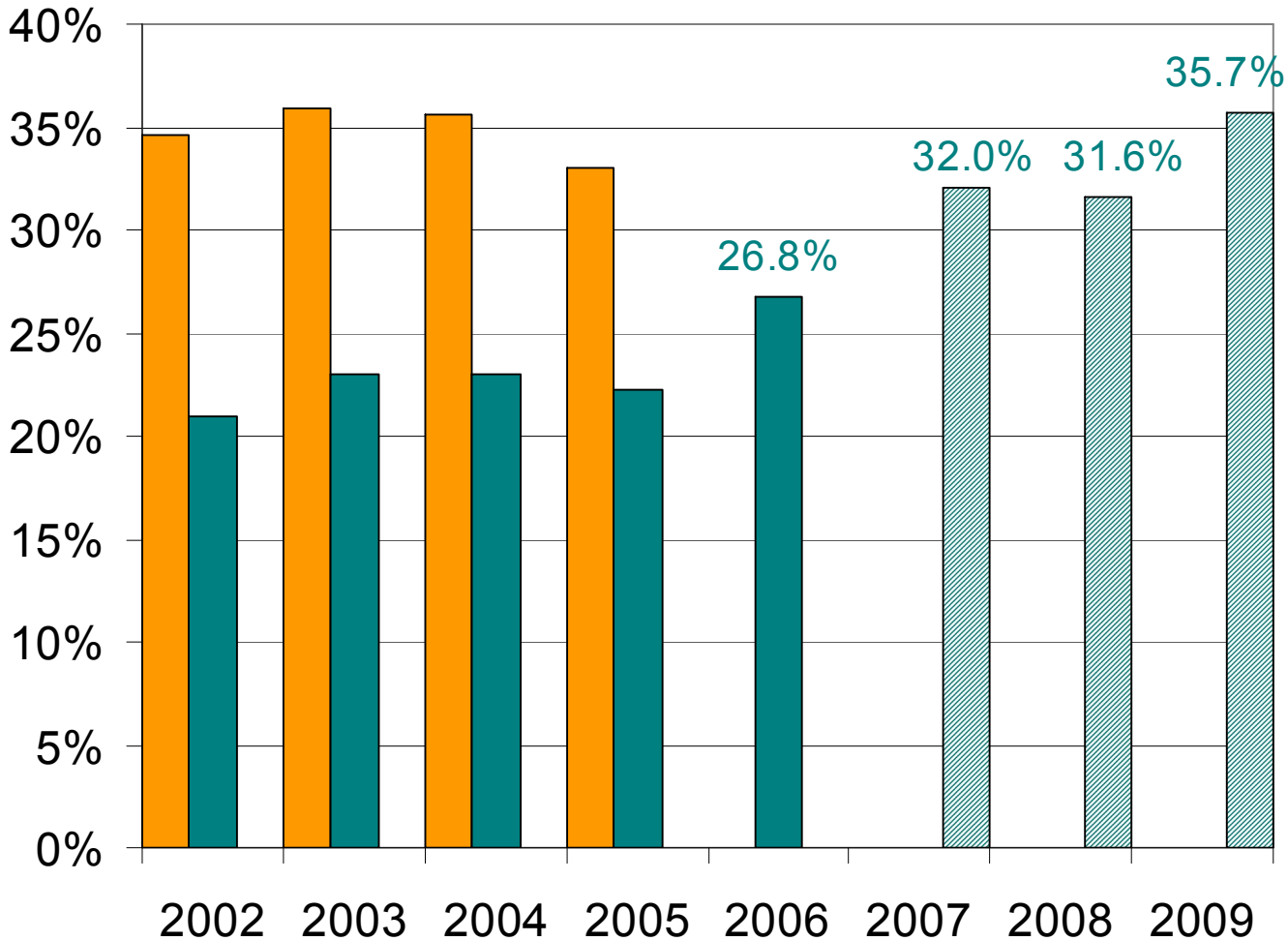
Progress Measure 5

Increase the percentage of undergraduates housed on campus from 23.1% in 2004-05 to 35% by 2009, with a long term target of 40%.



Trend: Percentage of Undergraduates Housed on Campus

(Data from US News and World Report)



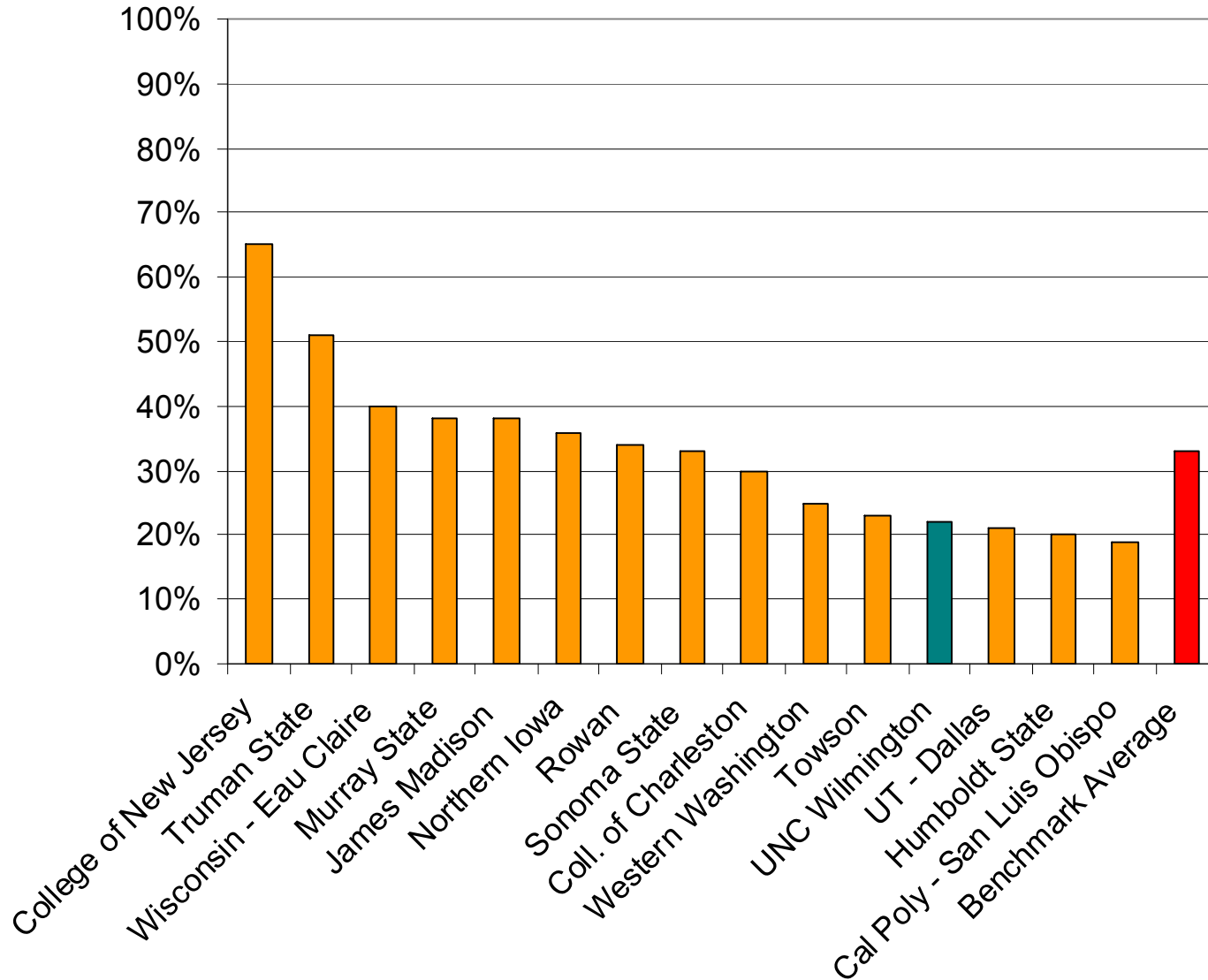
The opening of Seahawk Landing in Fall 2007 will move UNCW to 32%

Phase III would meet the target of 35% in 2009

Peer Average UNC Wilmington UNCW Projected

Fall 2005 Peer Comparison: Percentage of Undergraduates Housed on Campus

(Data from US News and World Report)



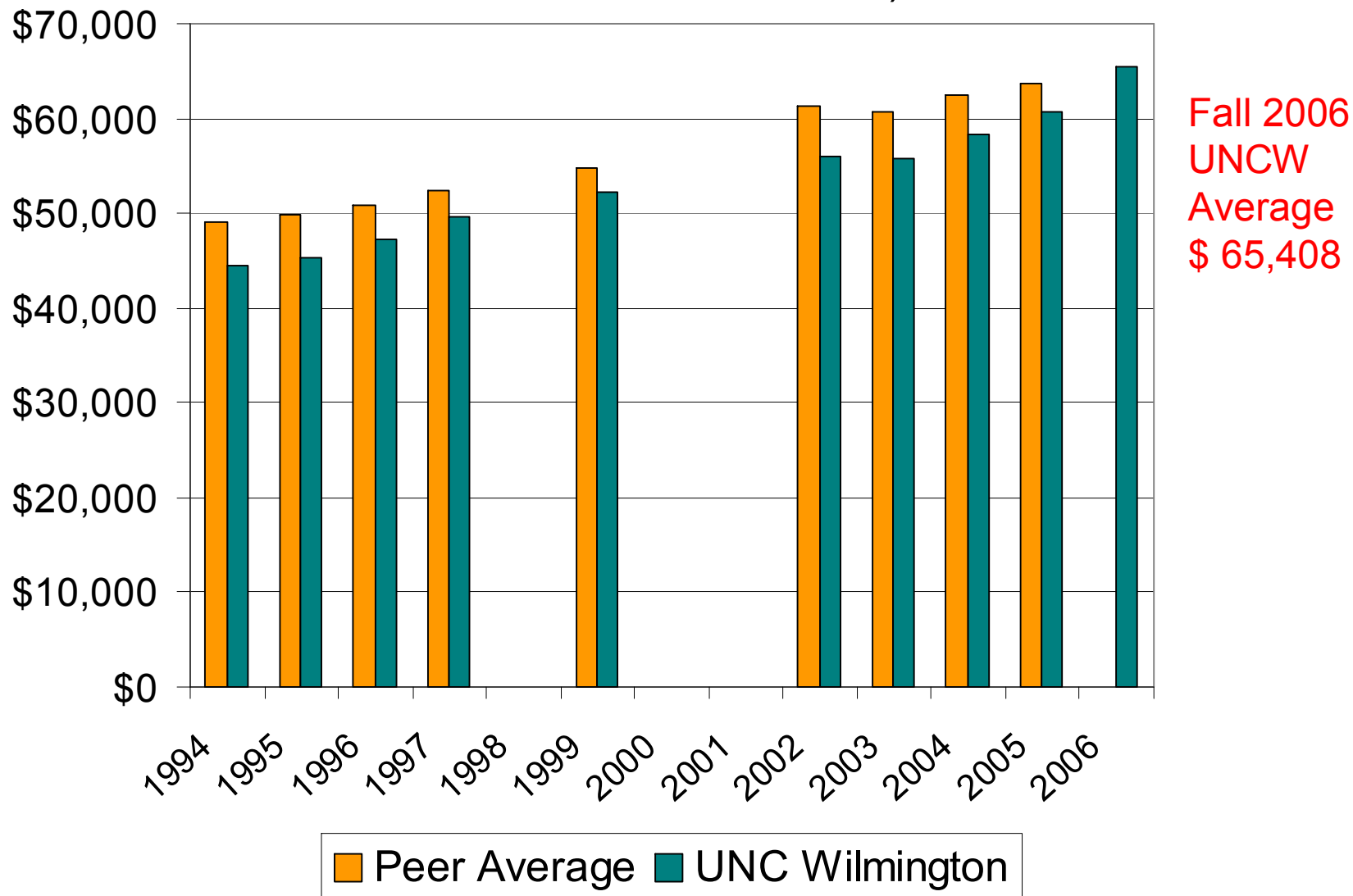
Progress Measure 6

...steadily increase average faculty salaries to the peer group 80th percentile for each rank...



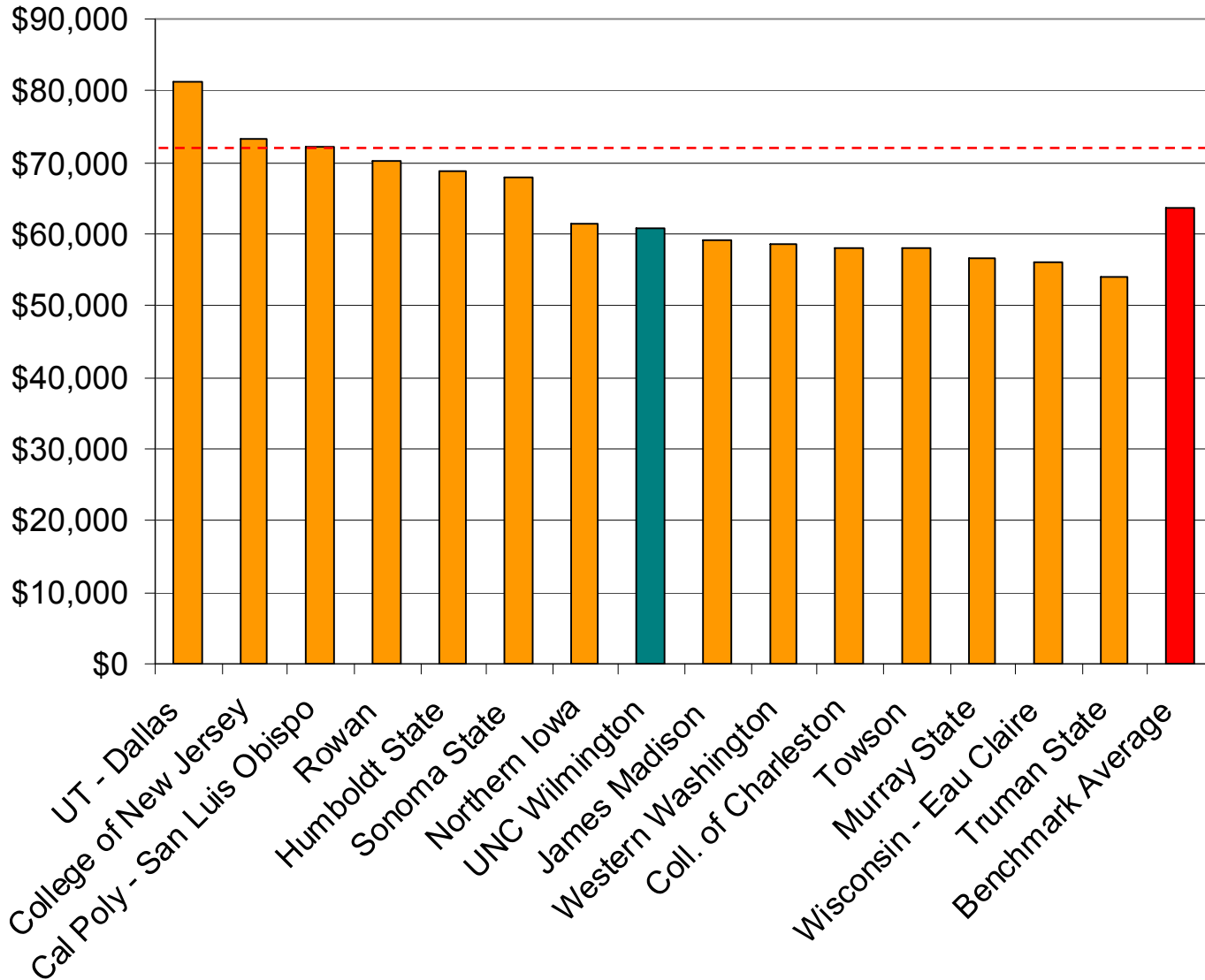
Average Faculty Salary Trend

(Average salary of full time instructional faculty on 9 or 10 month contracts. Data from IPEDS)



2005-06 Faculty Salary Comparison

(Average salary of full time instructional faculty on 9 or 10 month contracts. Data from IPEDS)



80th
percentile
of peers:
\$ 72,187

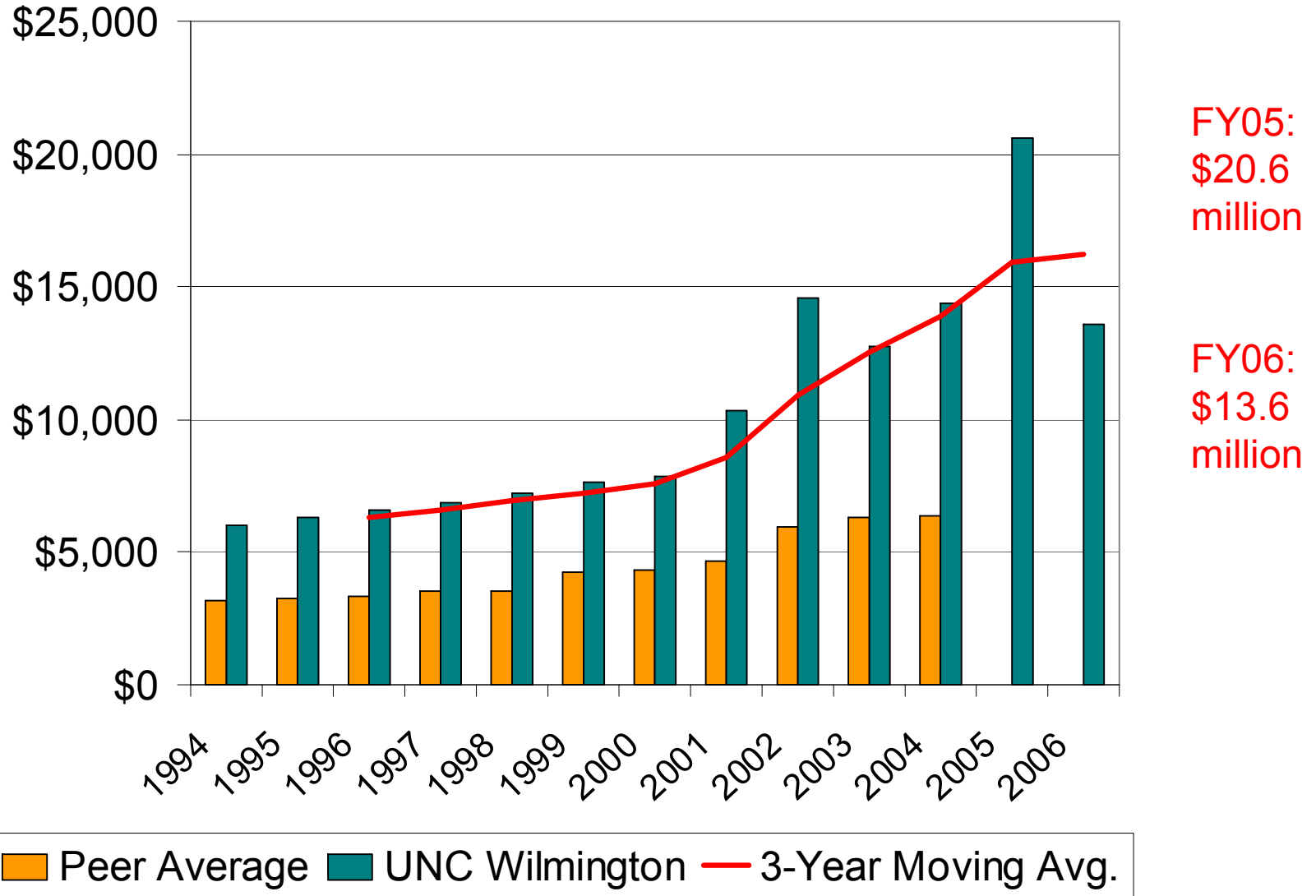
Progress Measure 7

Increase total annual R&D expenditures from \$13 million in FY 2004 to at least \$20 million by 2010.



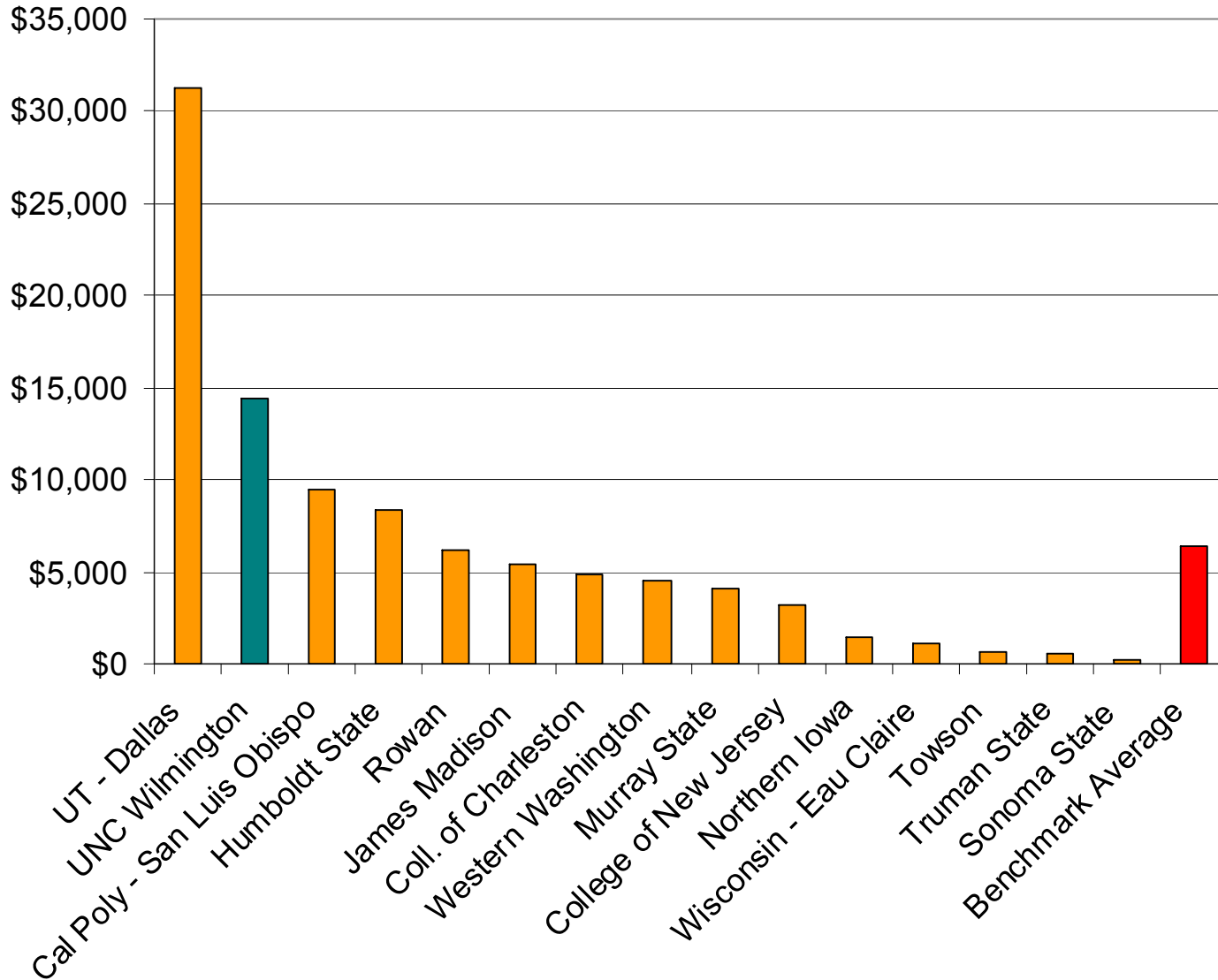
Total R&D Expenditures Trend

(Dollar amounts in thousands. FY data from NSF WebCASPAR)



FY 2004 Total R&D Expenditures Comparison

(Dollar amounts in thousands. Data from NSF WebCASPAR)



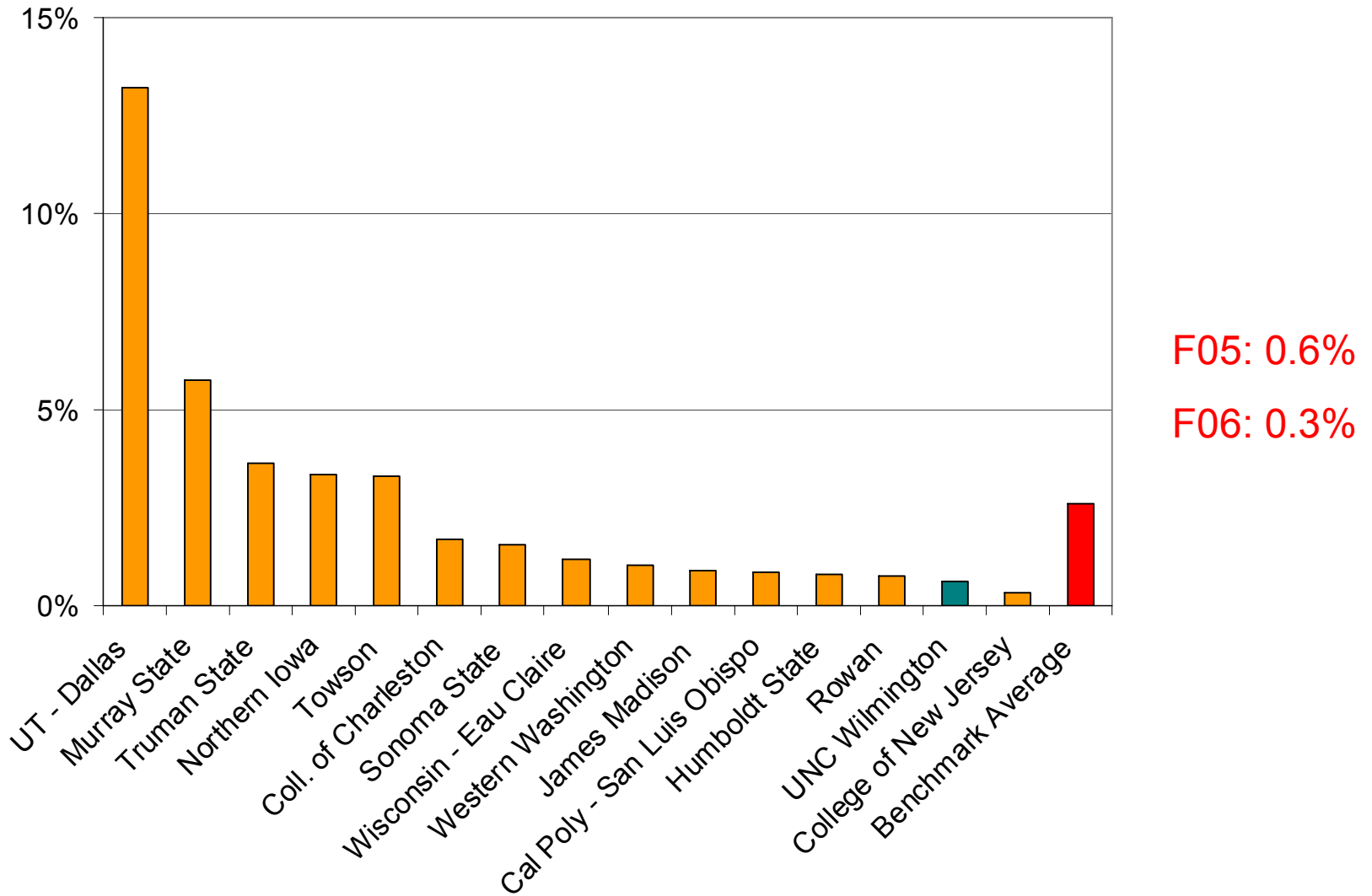
Progress Measure 8

By fall 2010, increase the international student population to 3% of the total student population, and annually send 5% of the total student body on a study abroad program earning at least three credits.



2005-06 International Enrollment Percentage Comparison

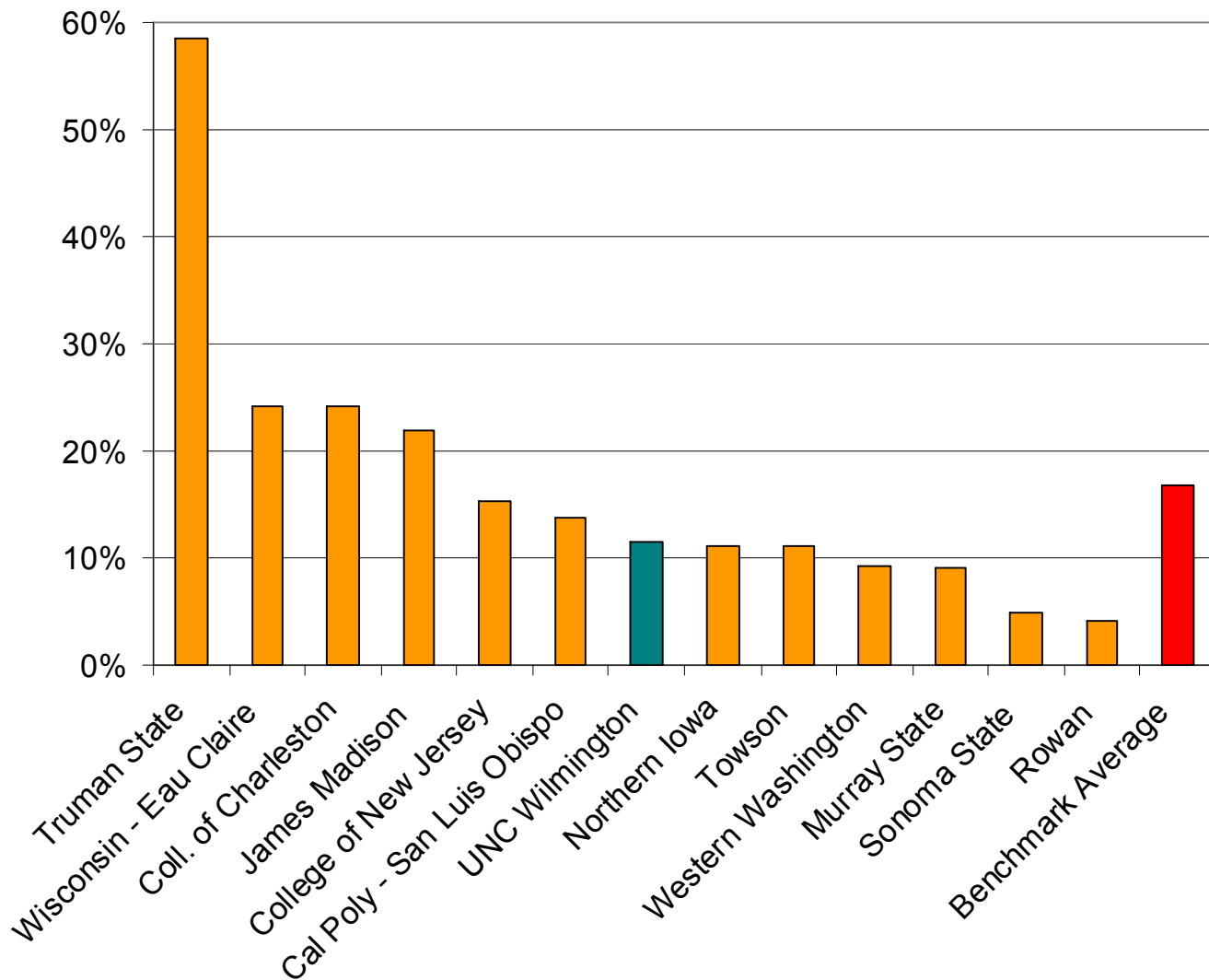
(Data from Institute of International Education
Open Doors 2006 Web site)



2004-05 Study Abroad Participation Rate Comparison

(Data from Institute of International Education

Open Doors 2006 web site. Data unavailable for Humboldt, UT-Dallas)



2004-05
rate:
11.5%

Est.
2005-06
rate:
12.3%

Progress Measure 9

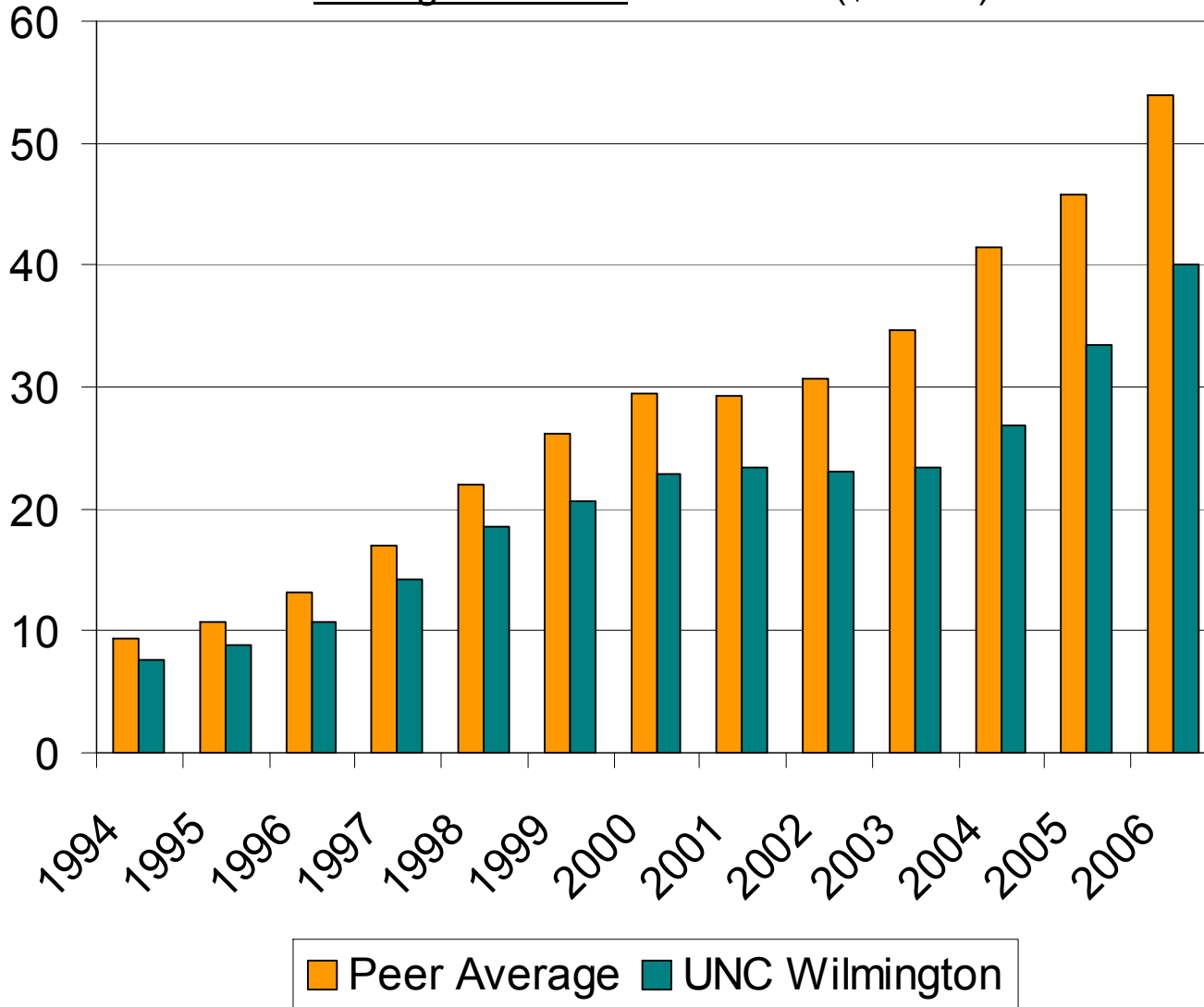
Raise significant additional endowment for diversity and merit scholarships, with a campaign to be completed by 2013.



Endowment Trend (\$ millions)

(End of Fiscal Year Market Value. Data from CAE)

Average excludes UT Dallas (\$236 M)

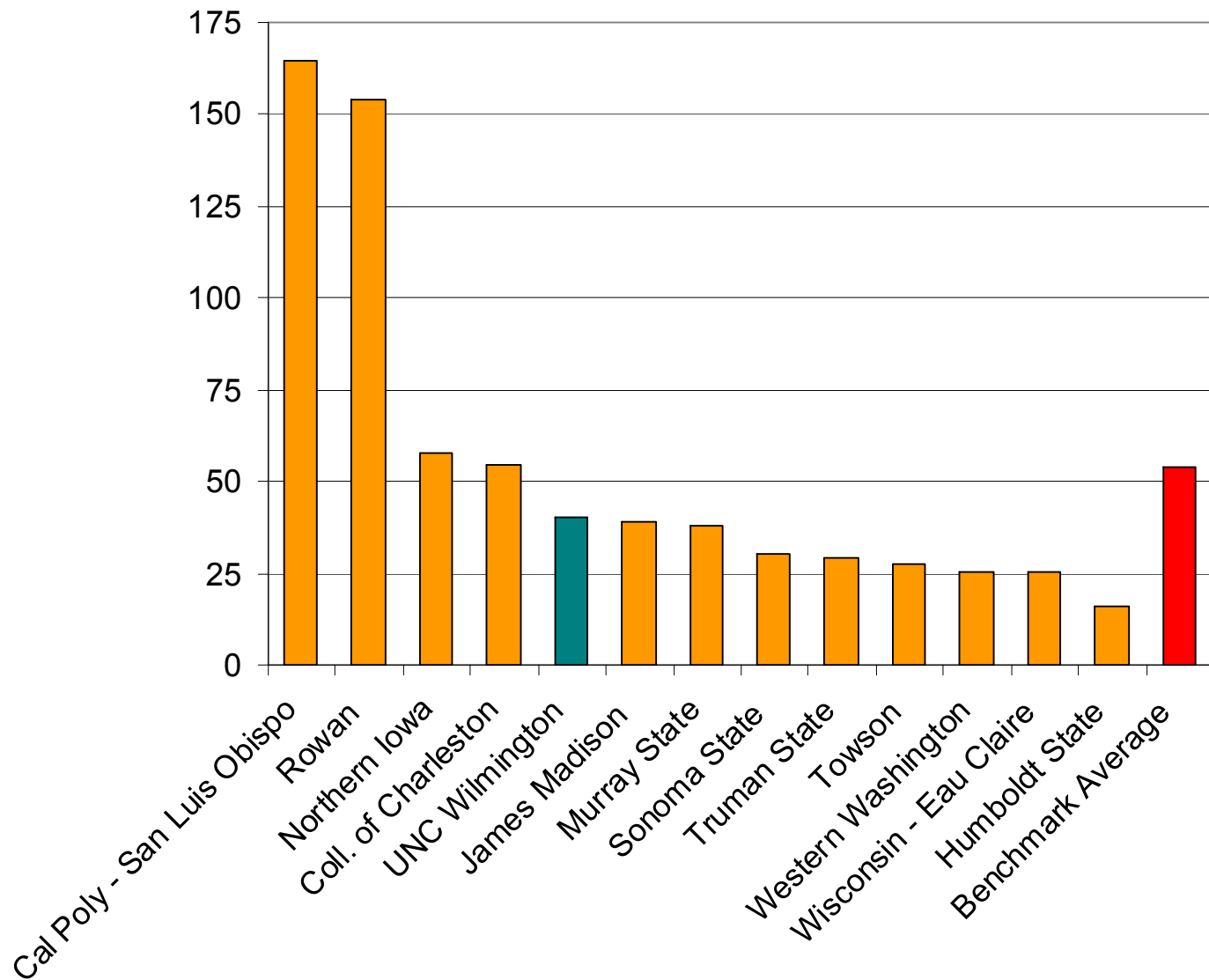


UNCW's
endowment
as of
12/31/06
was
\$43.8M

2006 Endowment Comparison (\$ millions)

(End of Fiscal Year Market Value. Data from CAE)

Excludes UT Dallas (\$236 M) and College of New Jersey (incomplete data)



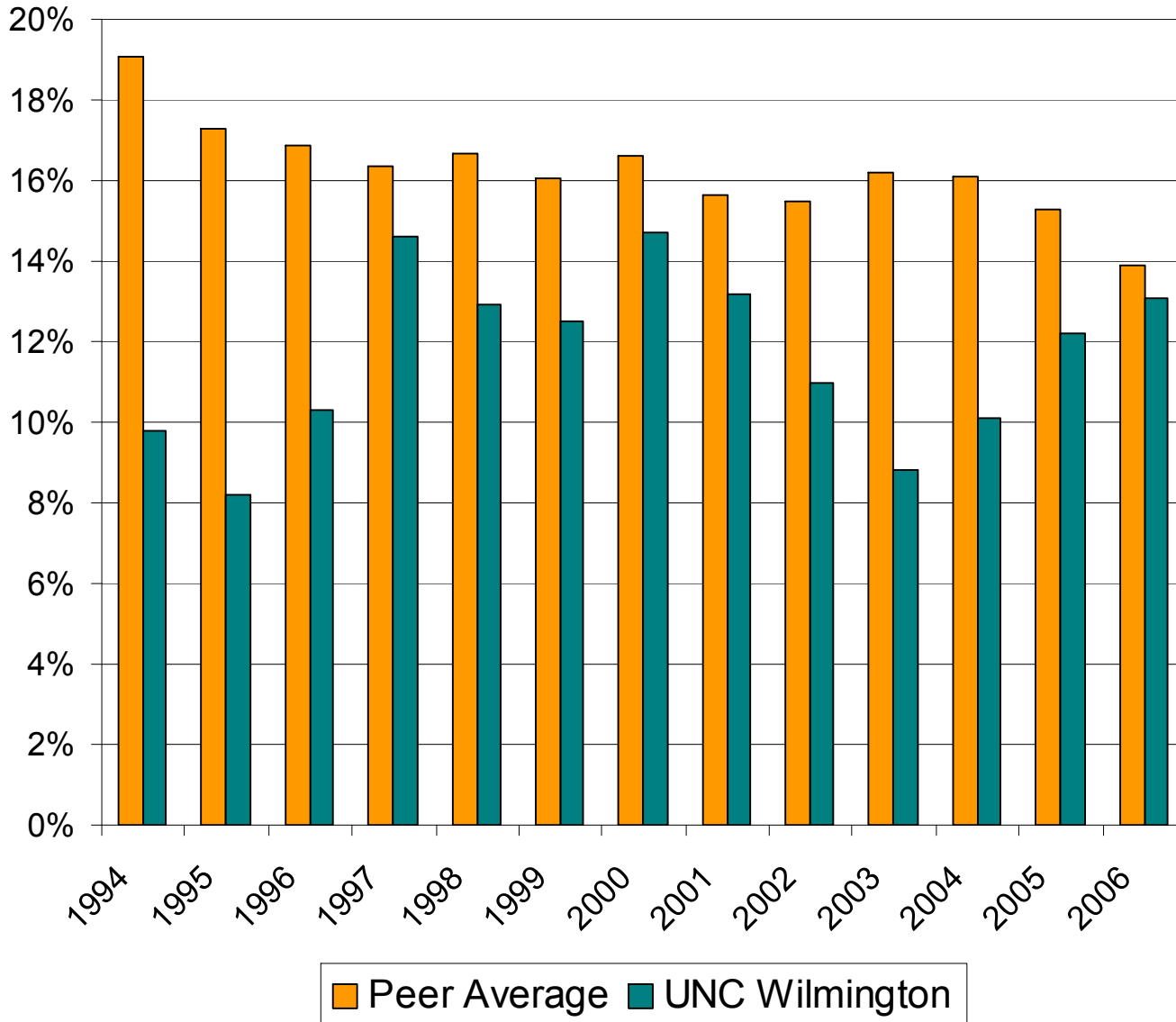
Progress Measure 10

Increase the alumni giving rate to at least 16% by FY 2008, and to a level in excess of 16% by FY 2010.



Alumni Giving (donors as a % of solicited)

(Data from CAE)



UNCW
FY06
Alumni
Giving
Rate:
13.1%

2006 Alumni Giving Comparison

(Data from CAE, except Coll. of Charleston, Coll. of New Jersey, and Sonoma State data from US News)

