

University Planning



**Peer Trends and Comparisons
Related to UNCW's
Ten Priority Progress Measures**

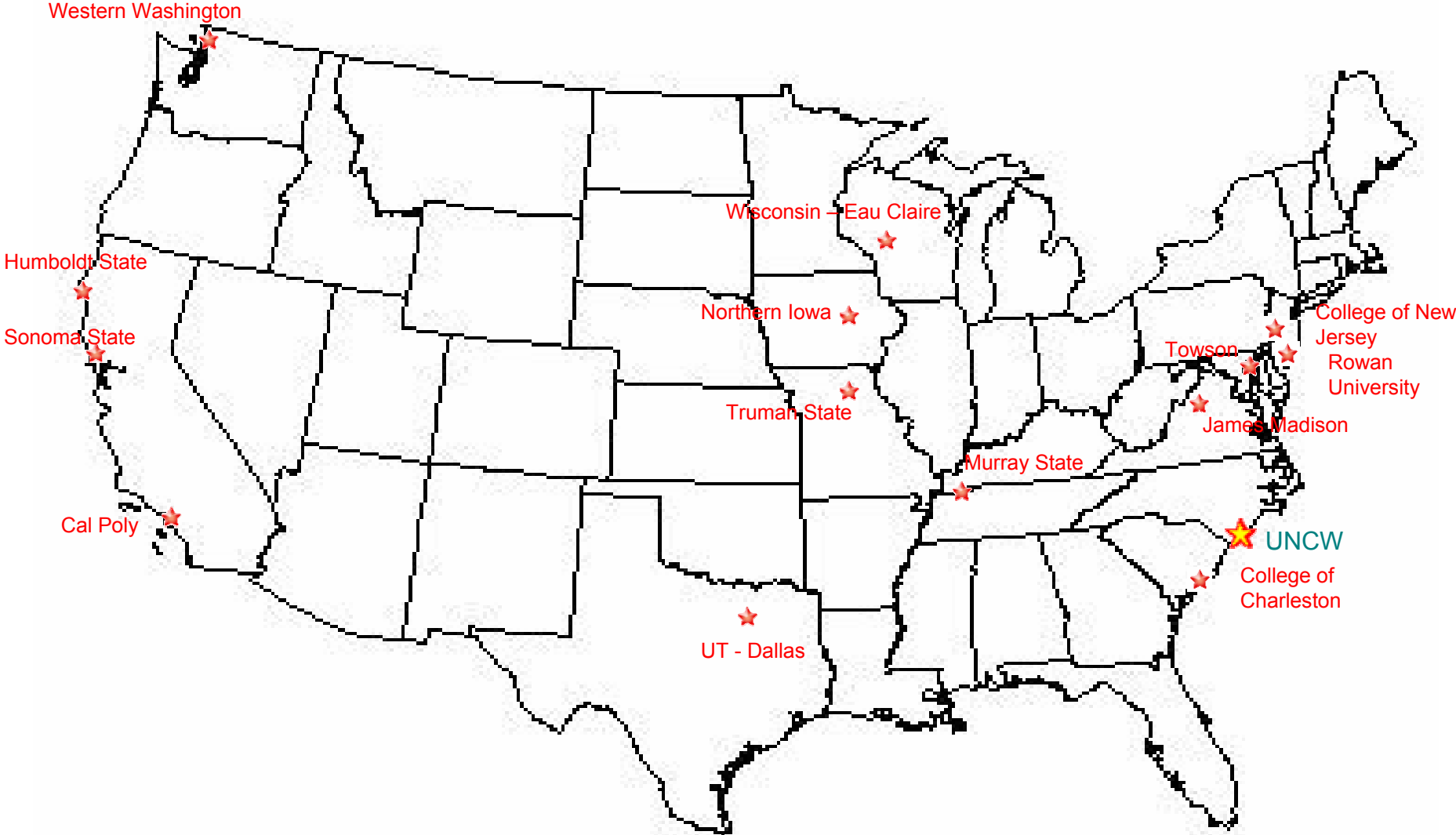
February 2008

Peer Institutions

Approved by the UNC Board of Governors February 2006

- Cal Poly – San Luis Obispo
- College Of Charleston
- College of New Jersey
- Humboldt State
- James Madison
- Murray State
- Northern Iowa
- Rowan
- Sonoma State
- Towson
- Truman State
- UT – Dallas
- Wisconsin – Eau Claire
- Western Washington

Geographic location of UNCW's peers



The Top Public Universities—Master's

NORTH	SOUTH	MIDWEST	WEST
<ul style="list-style-type: none"> 1. College of New Jersey 2. SUNY Col. Arts & Sci.–Geneseo 3. Rutgers, the State University of New Jersey–Camden 4. Rowan University (NJ) 5. Ramapo College of New Jersey 6. CUNY–Baruch College 7. Salisbury University (MD) 7. SUNY Col. Arts & Sci.–New Paltz 9. Millersville U. of Pennsylvania 9. Montclair State University (NJ) 9. Towson University (MD) 12. CUNY–Hunter College 12. CUNY–Queens College 12. SUNY–Fredonia 12. U. of Massachusetts–Dartmouth 	<ul style="list-style-type: none"> 1. James Madison University (VA) 2. The Citadel (SC) 3. College of Charleston (SC) 4. Univ. of Mary Washington (VA) 5. Appalachian State Univ. (NC) 6. Murray State University (KY) 6. U. of N.C.–Wilmington 8. Tennessee Technological Univ. 8. Winthrop University (SC) 10. Mississippi Univ. for Women 11. Longwood University (VA) 12. Western Kentucky University 13. U. of Tennessee–Chattanooga 14. Marshall University (WV) 15. Georgia College and State U. 15. Radford University (VA) 	<ul style="list-style-type: none"> 1. Truman State University (MO) 2. University of Northern Iowa 3. Univ. of Wisconsin–La Crosse 4. Univ. of Michigan–Dearborn 5. Univ. of Wisconsin–Eau Claire 6. Washburn University (KS) 7. U. of Wisconsin–Stevens Point 8. Grand Valley State Univ. (MI) 9. Southern Ill. U.–Edwardsville 10. University of Minnesota–Duluth 11. Missouri State Univ. 11. Univ. of Wisconsin–Whitewater 11. Winona State University (MN) 14. Eastern Illinois University 15. University of Central Missouri 15. Univ. of Nebraska–Kearney 15. Univ. of Wisconsin–River Falls 15. Western Illinois University 	<ul style="list-style-type: none"> 1. Cal Poly–San Luis Obispo 2. Western Washington University 3. N.M. Inst. of Mining and Tech. 4. Evergreen State College (WA) 5. California State U.–Long Beach 6. Calif. State Poly. U.–Pomona 6. California State Univ.–Chico 8. San Jose State University (CA) 9. Sonoma State University (CA) 10. California State U.–Fullerton 10. U. of Colo.–Colorado Springs 12. California State U.–Stanislaus 12. Central Washington University 12. Eastern Washington University 12. Texas State Univ.–San Marcos 16. Humboldt State University (CA)

Denotes UNCW peer

UNCW's Ten Progress Measures Address:


1. Student-faculty ratio
2. Student-staff ratio
3. Diversity
4. Retention and graduation rates
5. Campus housing
6. Salaries
7. Research expenditures
8. International students and study abroad
9. Endowment for scholarships
10. Alumni giving

For each progress measure...

- Where are we now?
- Are we headed in the right direction?
- How do we compare with our peers?

Progress Measures Dashboard

(Change from last year to this year)

Student-faculty ratio		Faculty salaries	
Student-staff ratio		Research expenditures	
Diversity		International students	
Minority grad. rate		Study abroad	
Retention rate		Endowment	
4-yr graduation rate		Merit scholarship \$	
6-yr graduation rate		Merit scholarship #	
Campus housing		Alumni giving	

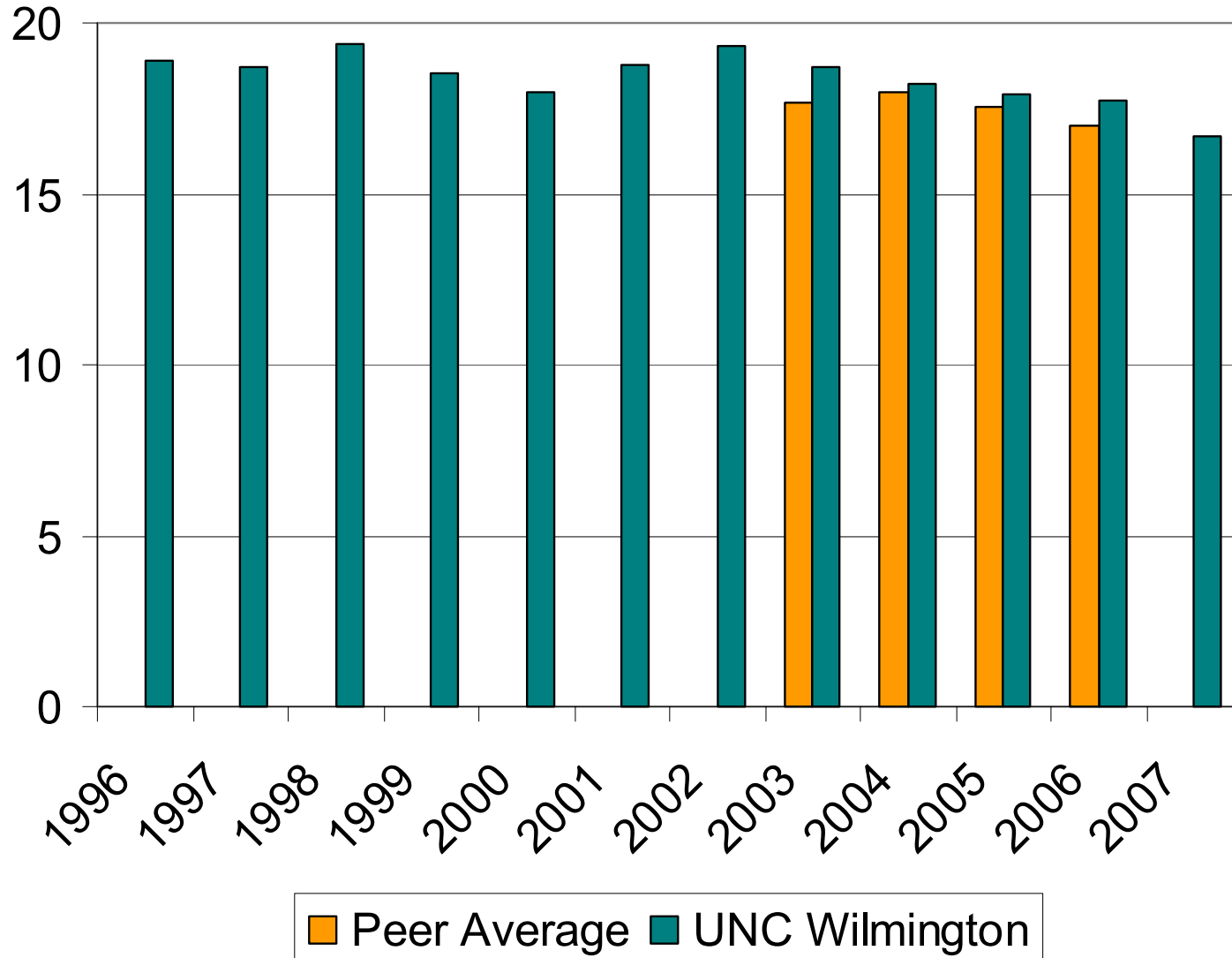
Progress Measure 1

Improve the student-faculty ratio from 18.2 to 1 in 2004-05 to 17.2 to 1 by 2007, with a long term target of 16 to 1.



Student-Faculty Ratio Trend

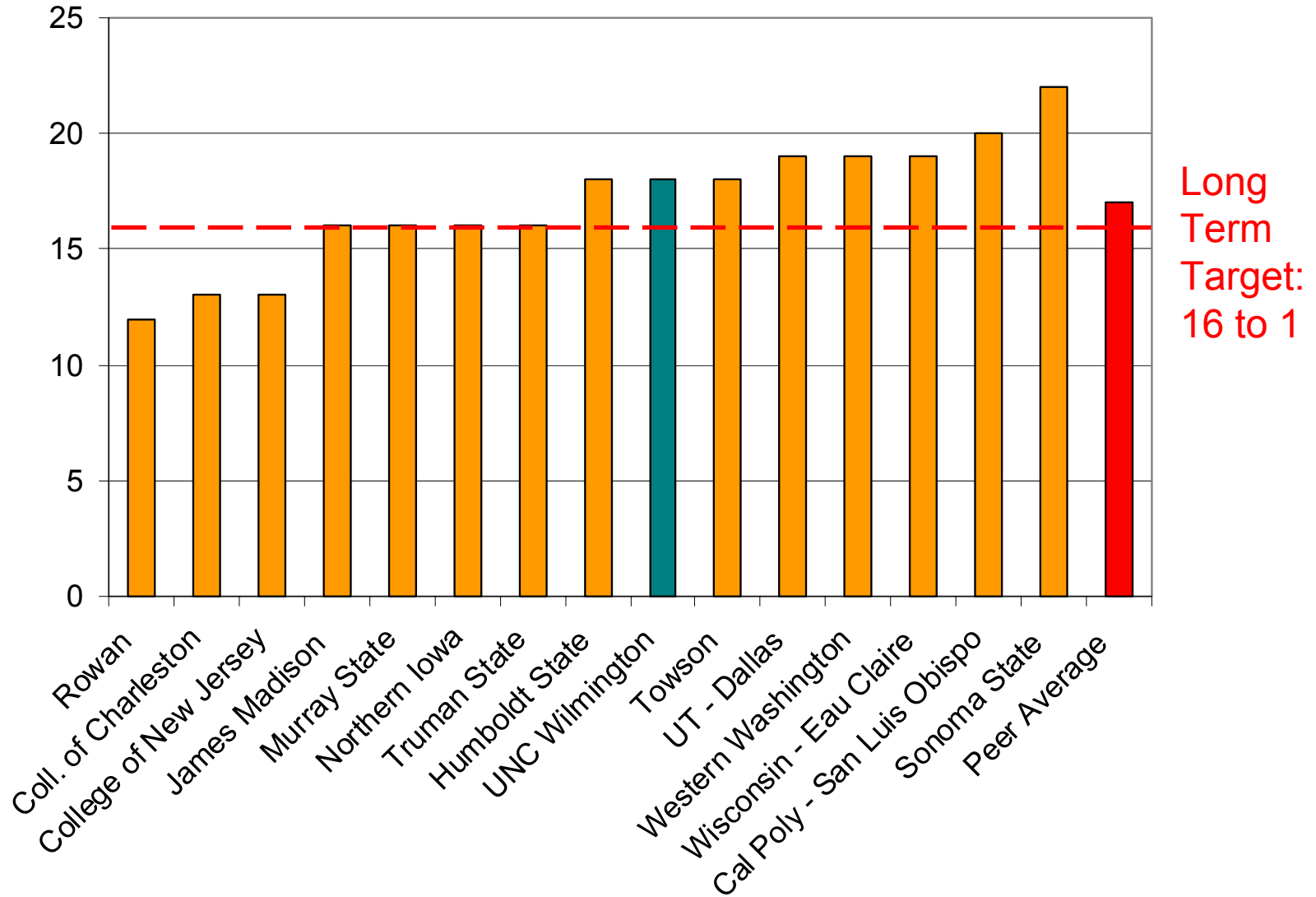
(Data from US News and World Report)



Fall 2007
UNCW
student-
faculty ratio
was
16.7 to 1

Fall 2006 Student-Faculty Ratio Comparison

(Data from US News and World Report)



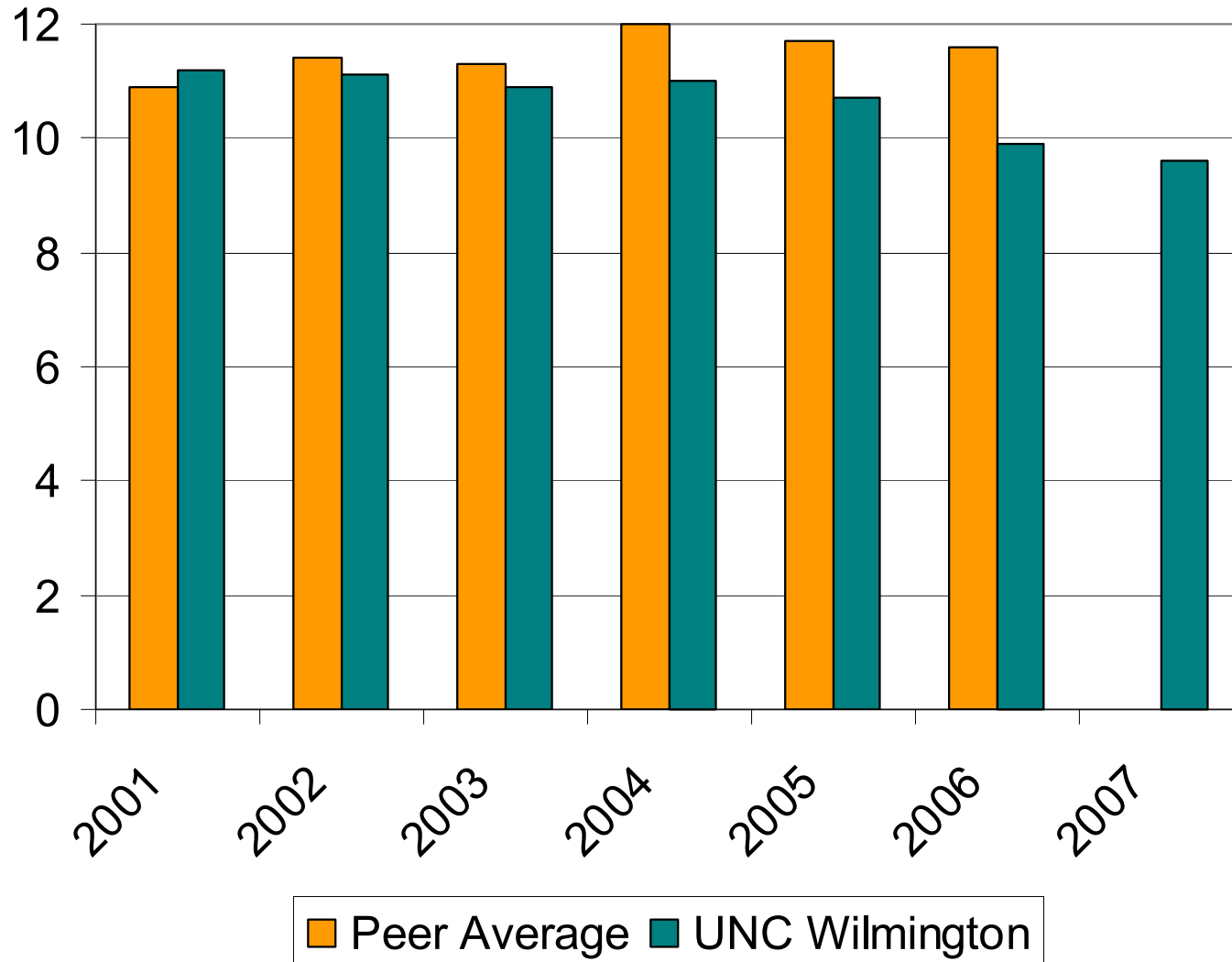
Progress Measure 2

Improve the student-staff ratio from 10.9 to 1 in 2003-04 to 10.0 to 1 by 2010.



Student-Staff Ratio Trend

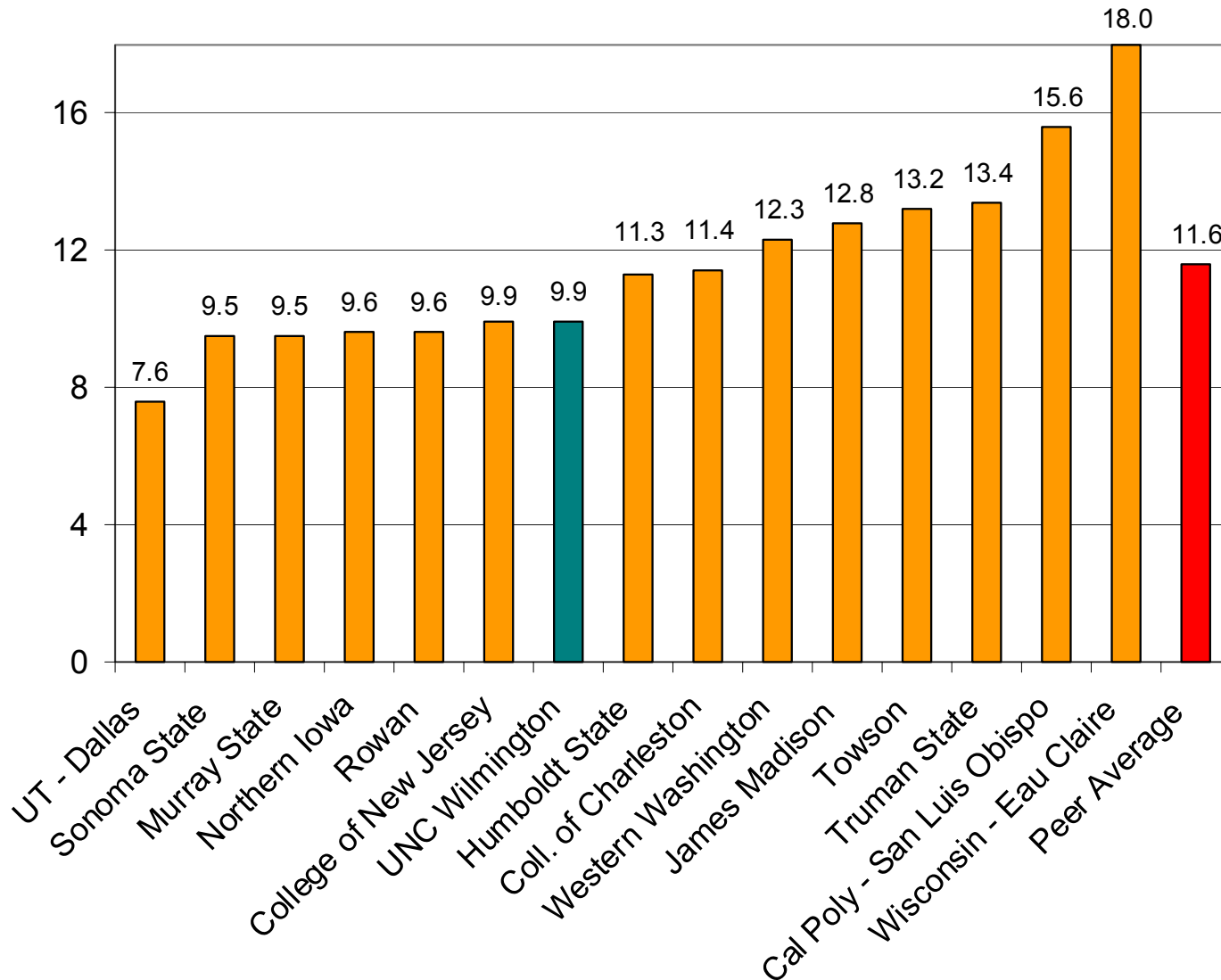
(2007 UNCW data from OIR. Other institution data from IPEDS)



Estimated
Fall 2007
student-
staff ratio:
9.6 to 1

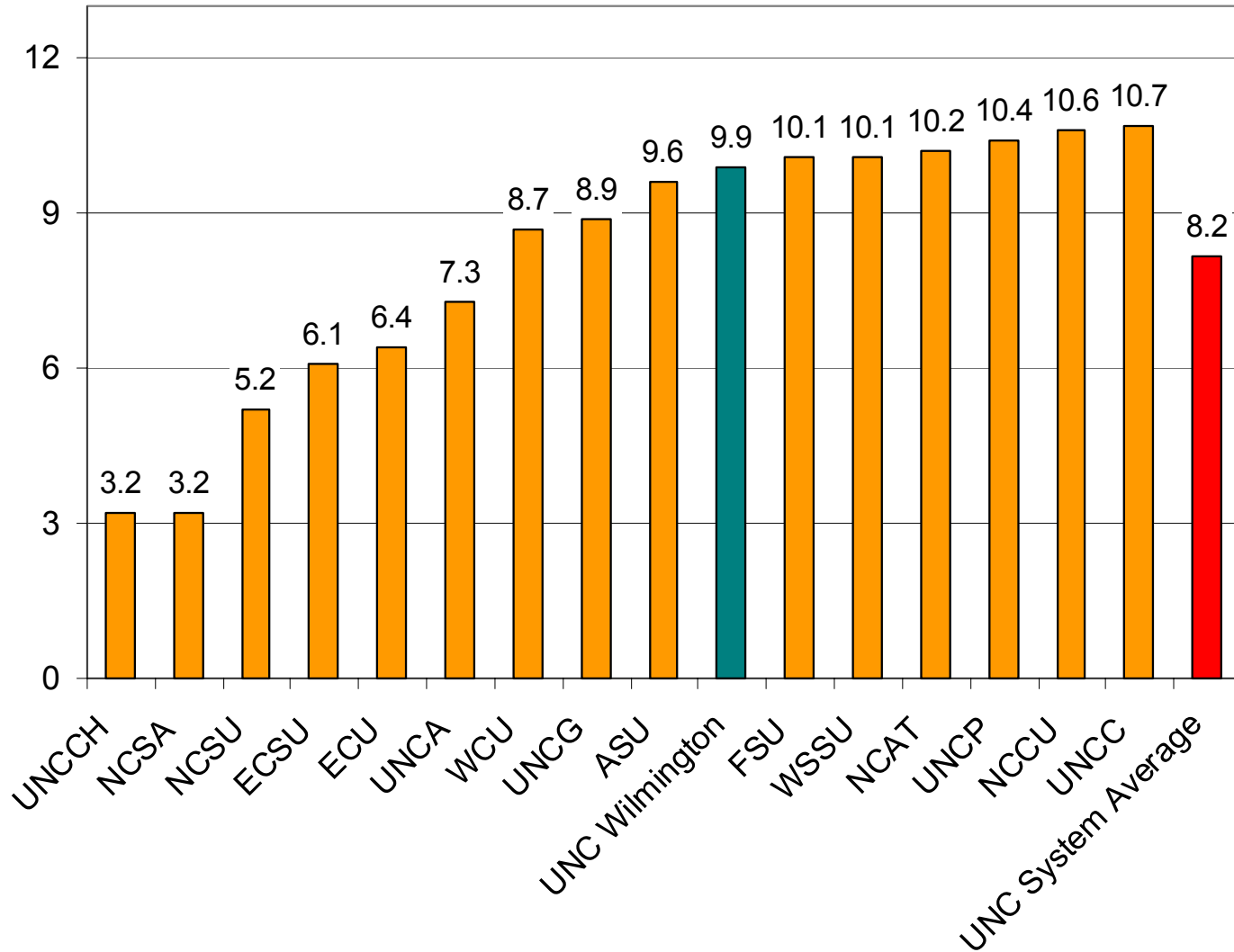
Fall 2006 Student-Staff Ratio Peer Comparison

(Data from IPEDS)



Fall 2006 Student-Staff Ratio UNC System Comparison

(Data from IPEDS)

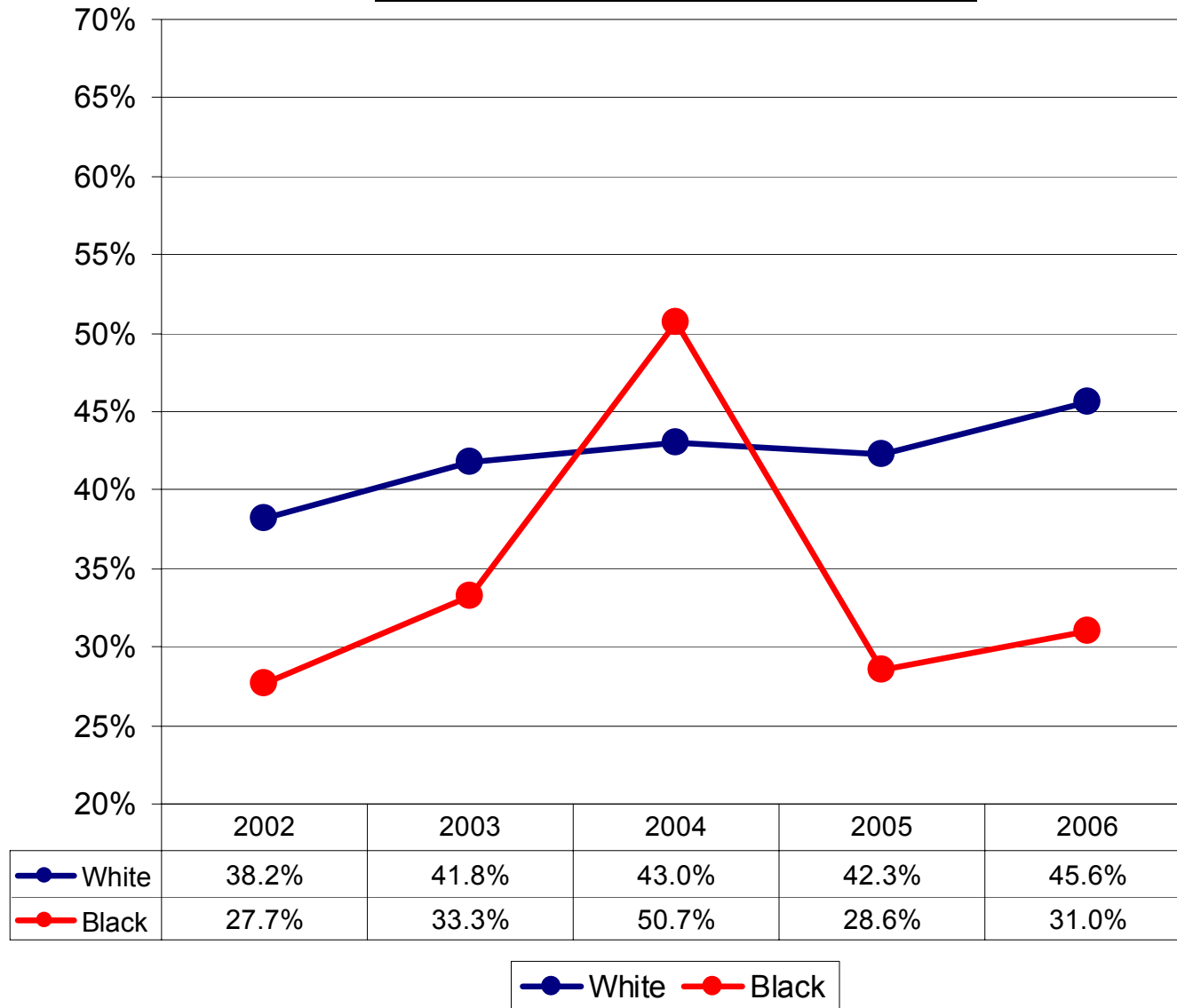


Progress Measure 3 (Part I)

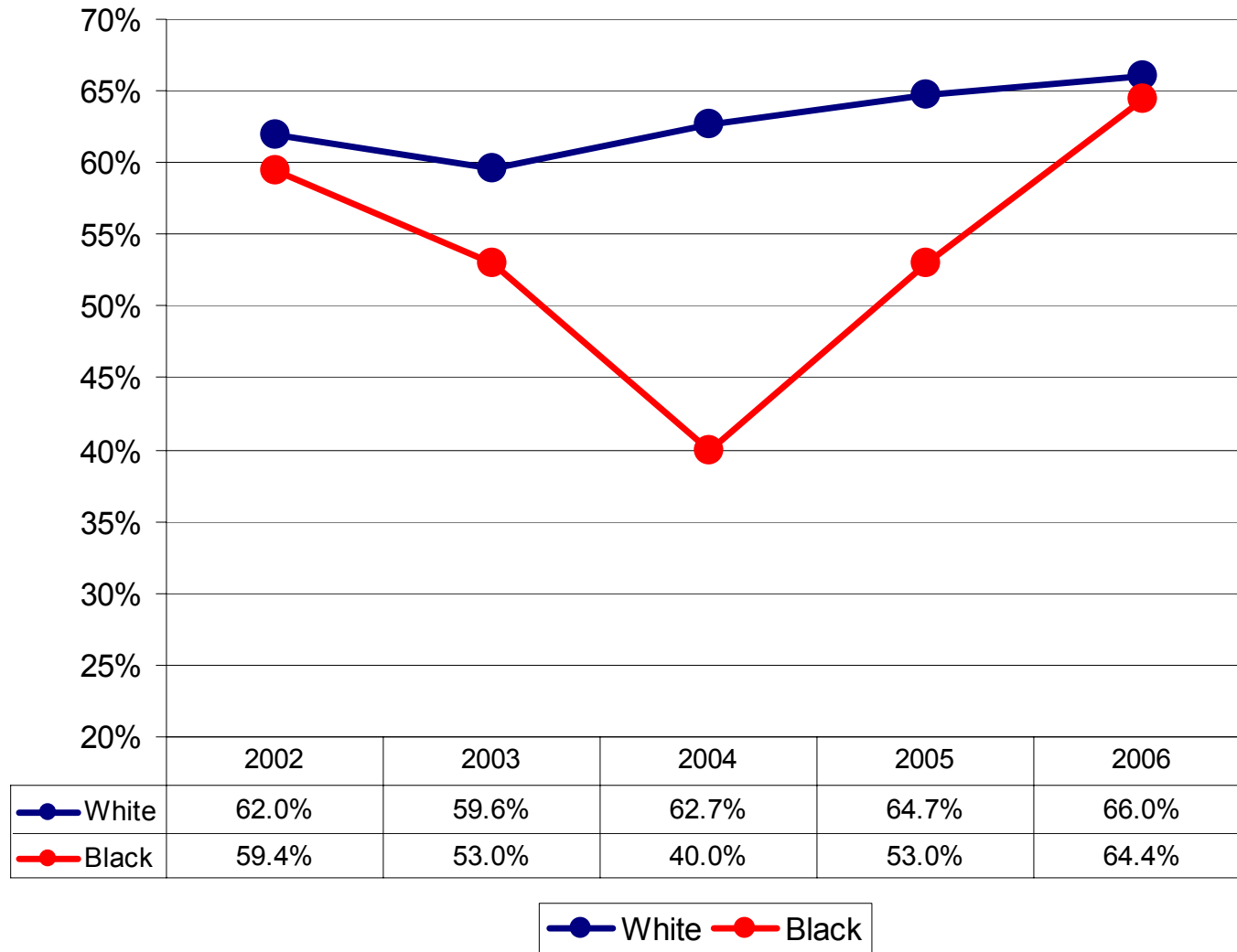
Reduce disparities in retention and graduation rates between majority and minority student populations...



UNCW 4-year graduation rates: Ethnic differences



UNCW 6-year graduation rates: Ethnic differences

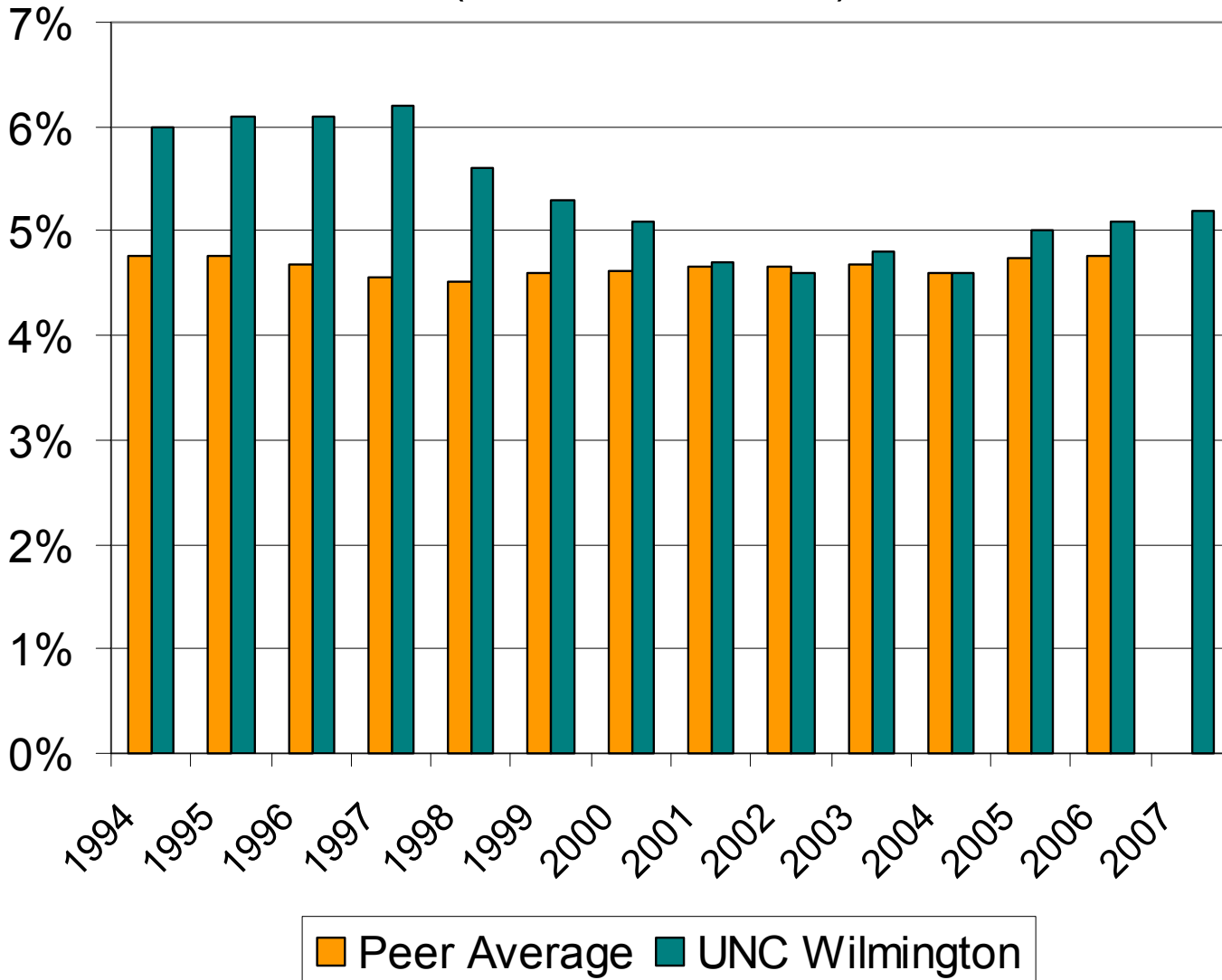


Progress Measure 3 (Part II)

...increase the proportion of student enrollments from historically underrepresented groups to achieve a critical mass necessary to enrich the education of all UNCW students.

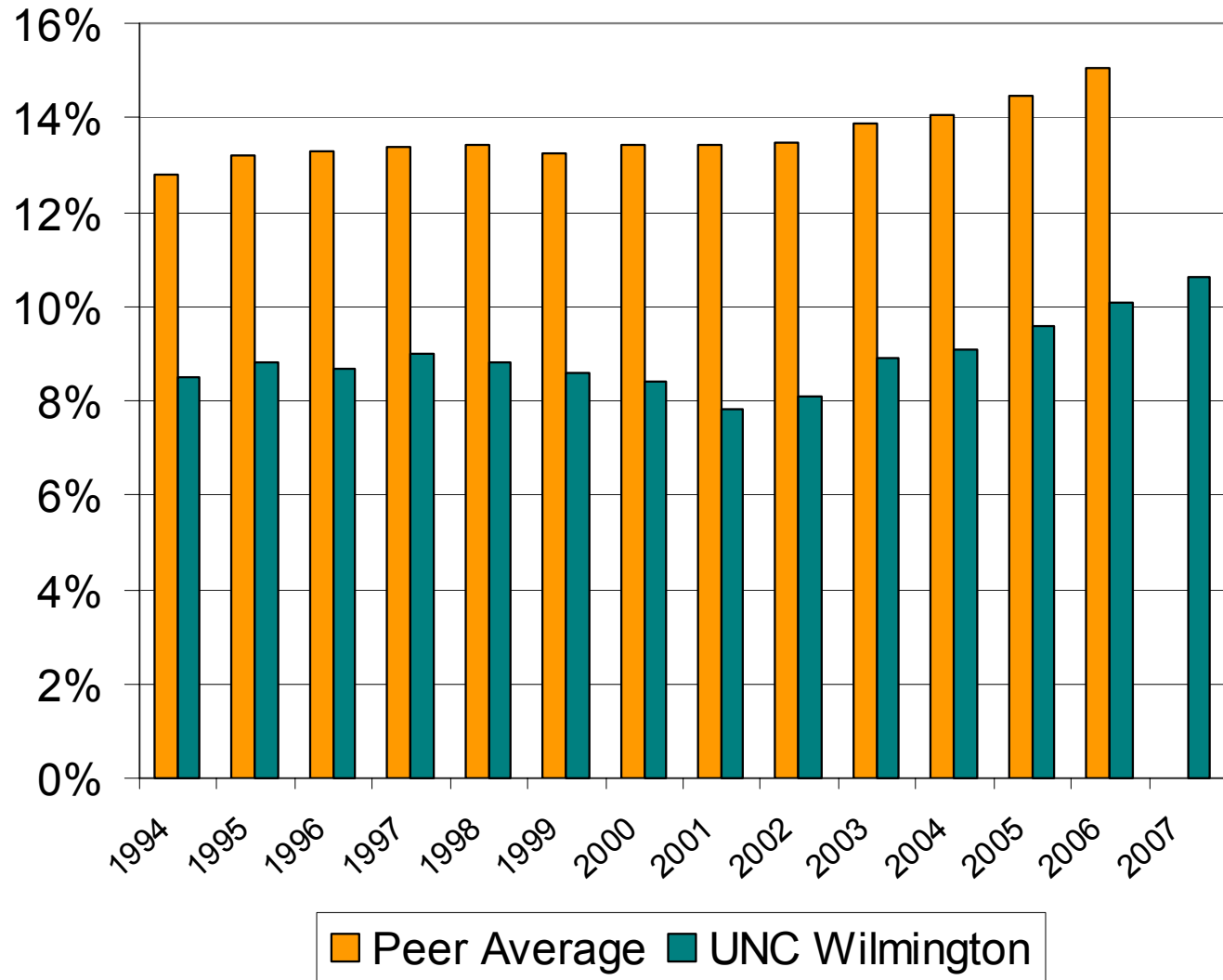


Trend: Black, Non-Hispanic Students as a Percentage of Total Enrolled (Data from IPEDS)



Fall 2007
percentage:
5.2%

Trend: Minority Students as a Percentage of Total Enrolled (Data from IPEDS)



Fall 2007
percentage:
10.6%

Progress Measure 4

Increase the freshman to sophomore retention rate from 85.7% in 2004-05 to 90% by 2011, the four-year graduation rate from 42.8% in 2004-05 to 50% by 2012, and the six-year graduation rate from 61% in 2004-05 to 70% by 2012 and to 75% by 2017.



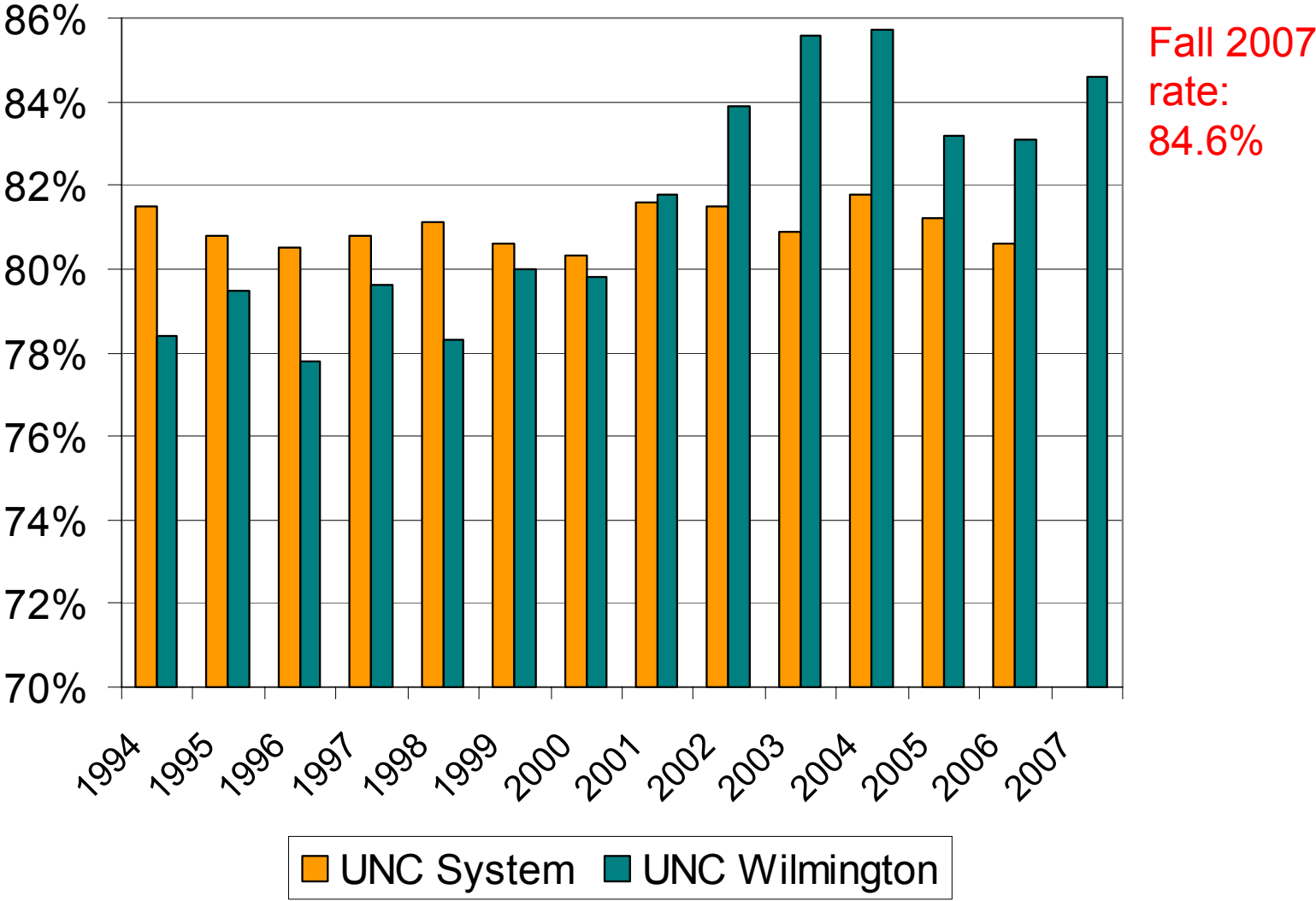
Progress Measure 4

Increase the freshman to sophomore retention rate from 85.7% in 2004-05 to 90% by 2011, the four-year graduation rate from 42.8% in 2004-05 to 50% by 2012, and the six-year graduation rate from 61% in 2004-05 to 70% by 2012 and to 75% by 2017.



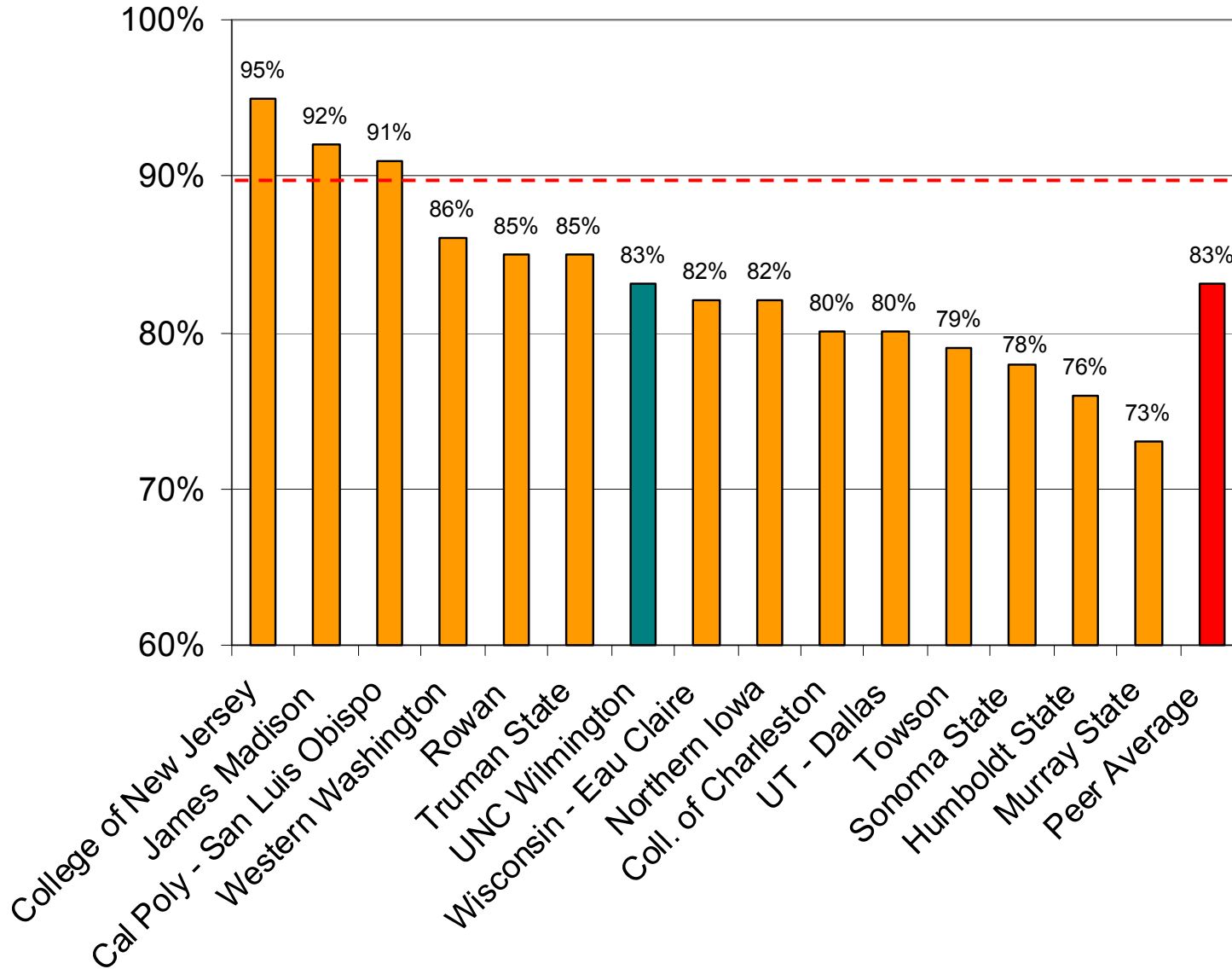
Freshman Retention Rate Trend

(Data from UNC System Web site)



2006 Freshman Retention Rate Comparison

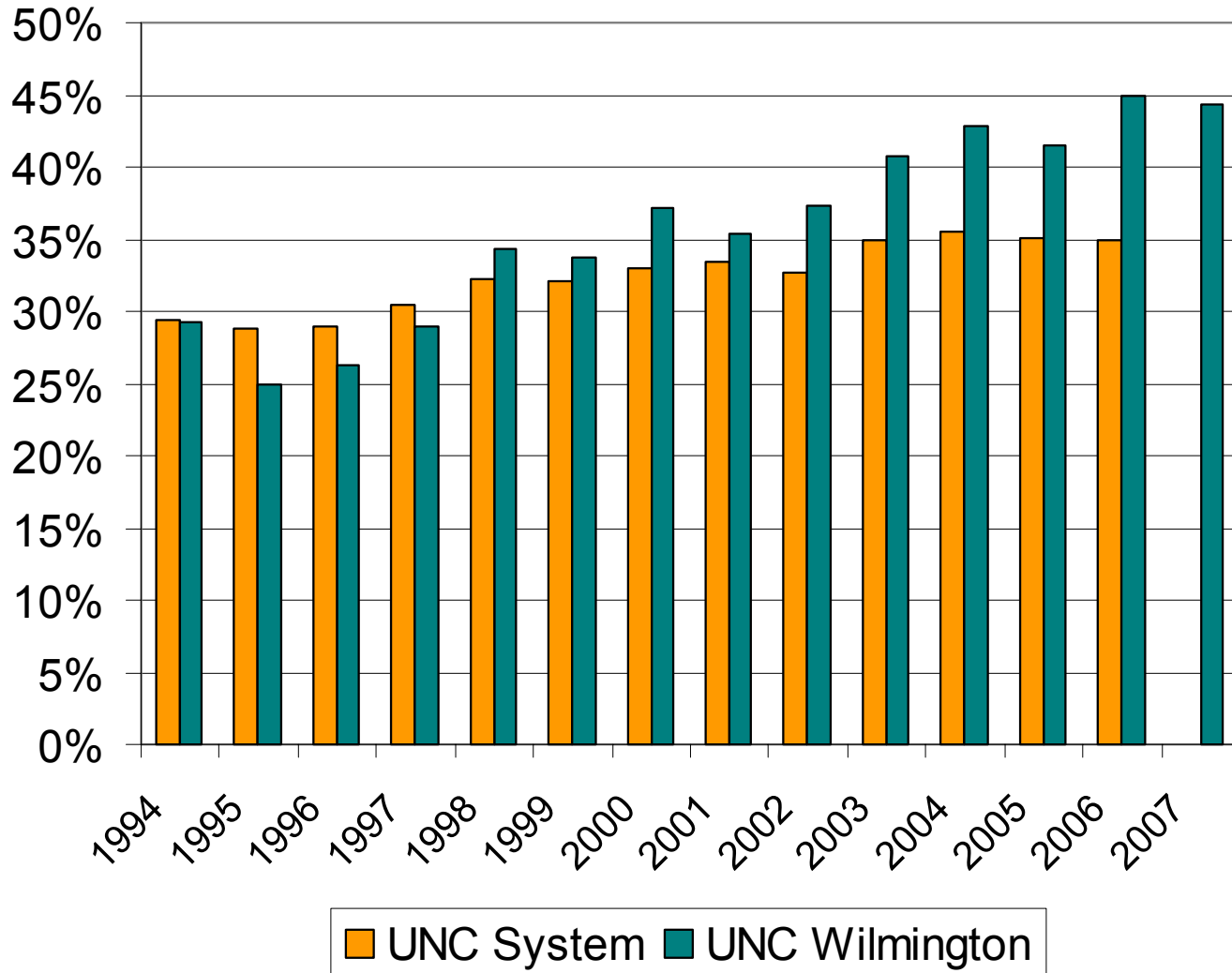
(Data from IPEDS)



2011
Target:
90%

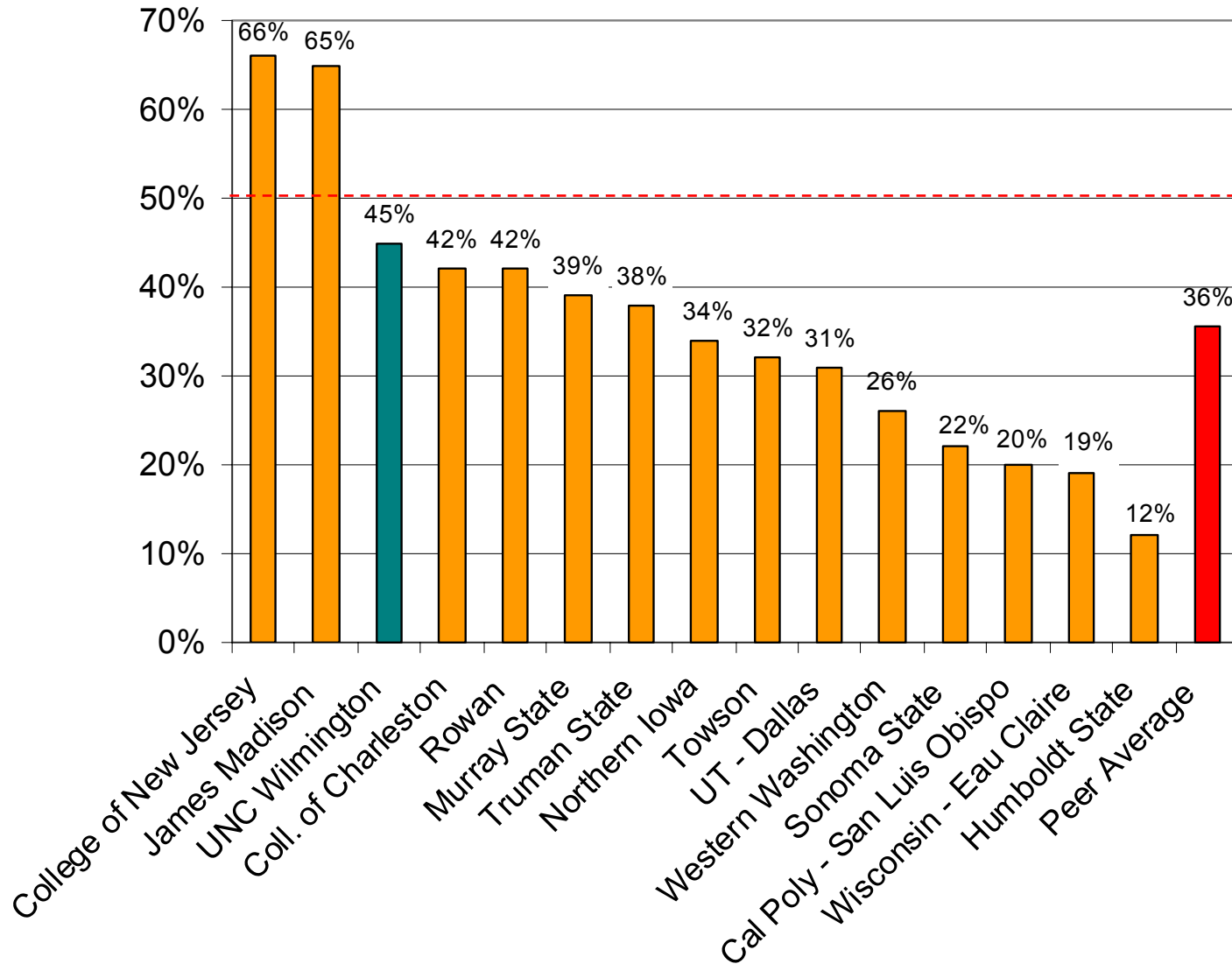
Four-year Graduation Rate Trend

(Data from UNC System Web site)



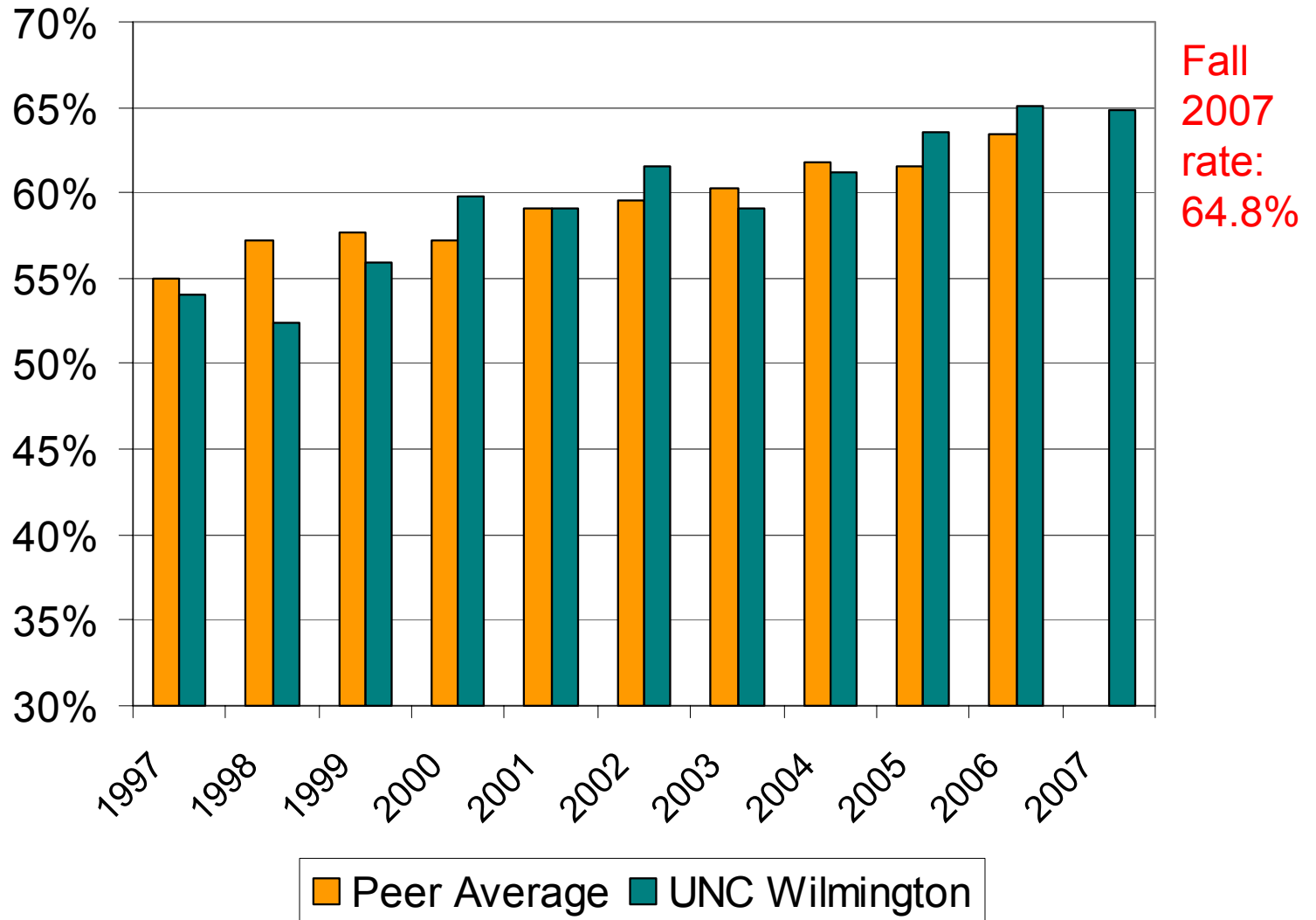
Fall 2007
rate: 44.3%

2006 Four-year Graduation Rate Comparison (Data from IPEDS)



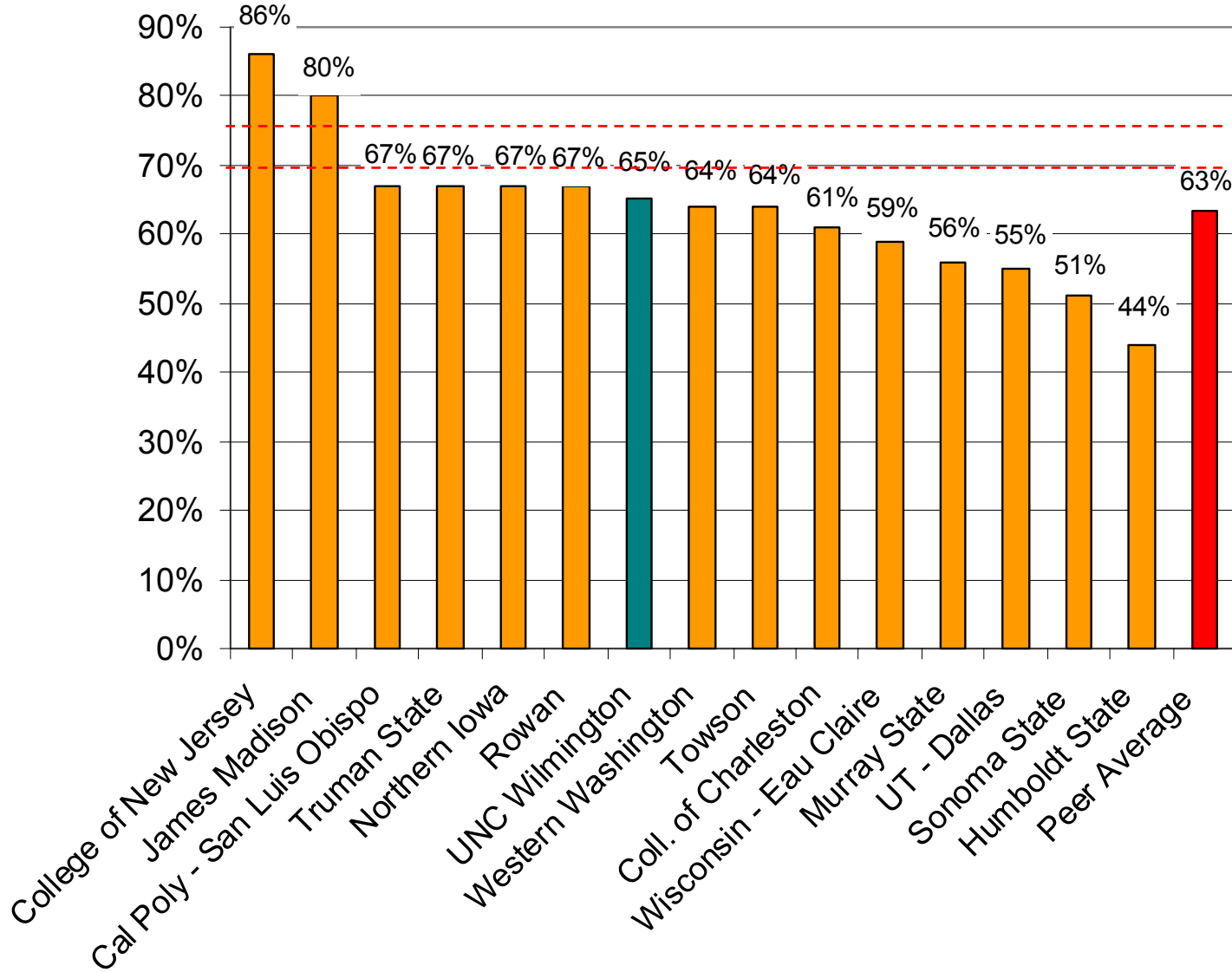
2012
Target:
50%

Six-year Graduation Rate Trend (Data from IPEDS)



2006 Six-year Graduation Rate Comparison

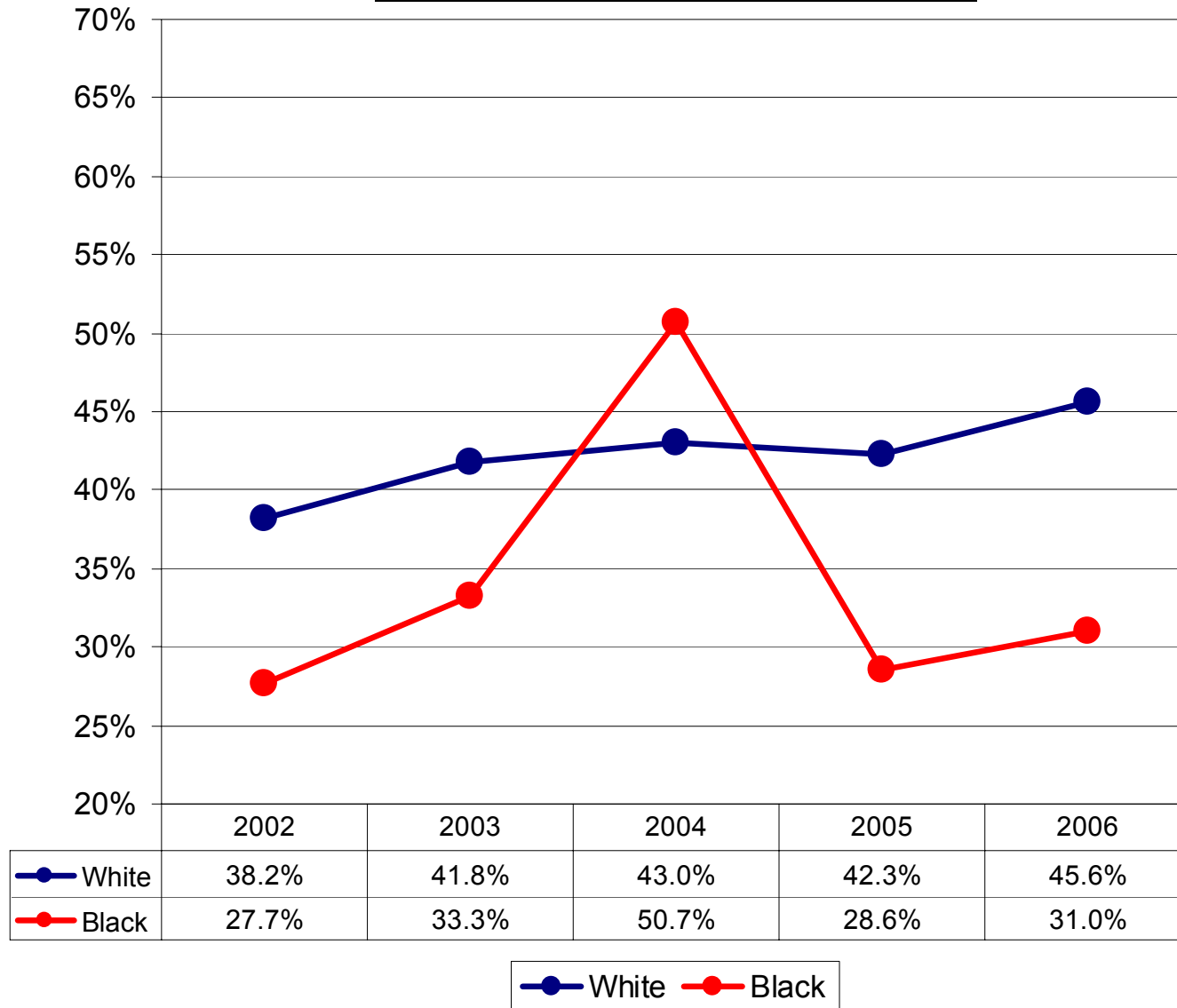
(Data from IPEDS)



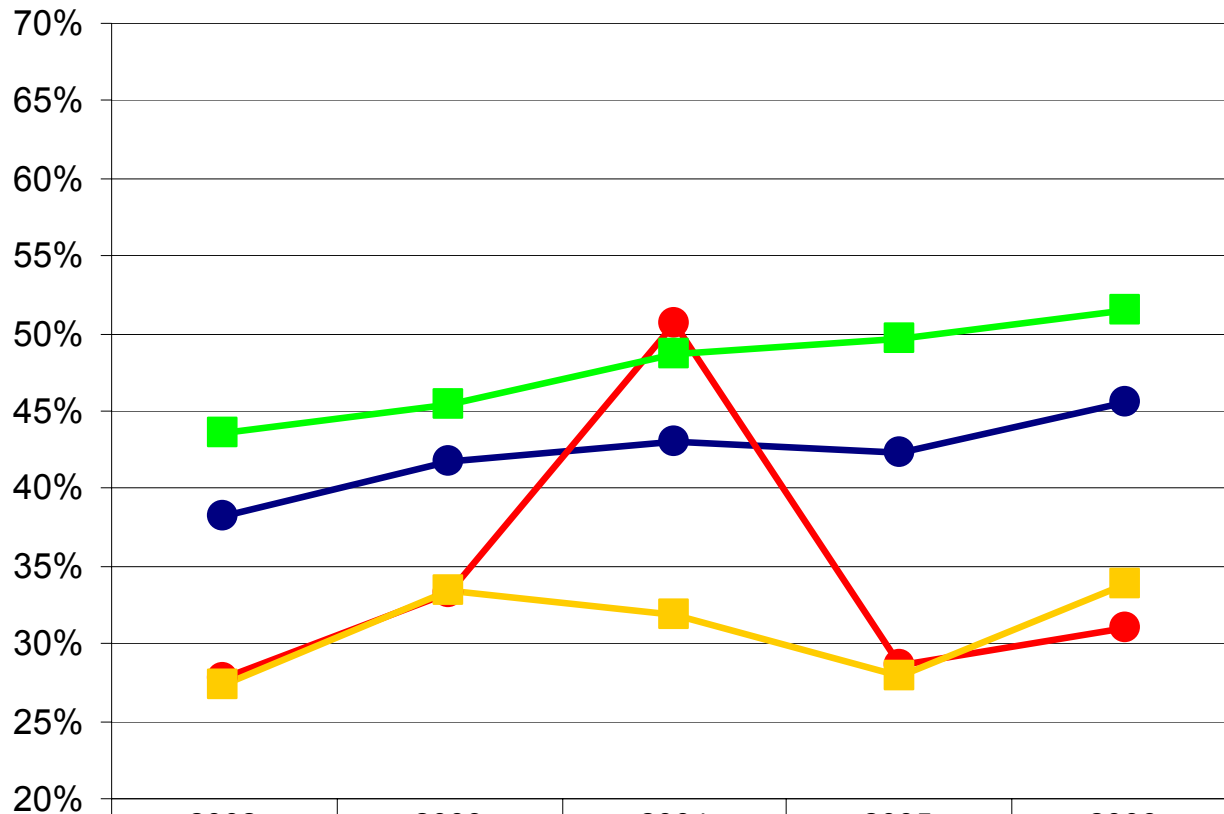
2017
Target:
75%

2012
Target:
70%

UNCW 4-year graduation rates: Ethnic differences



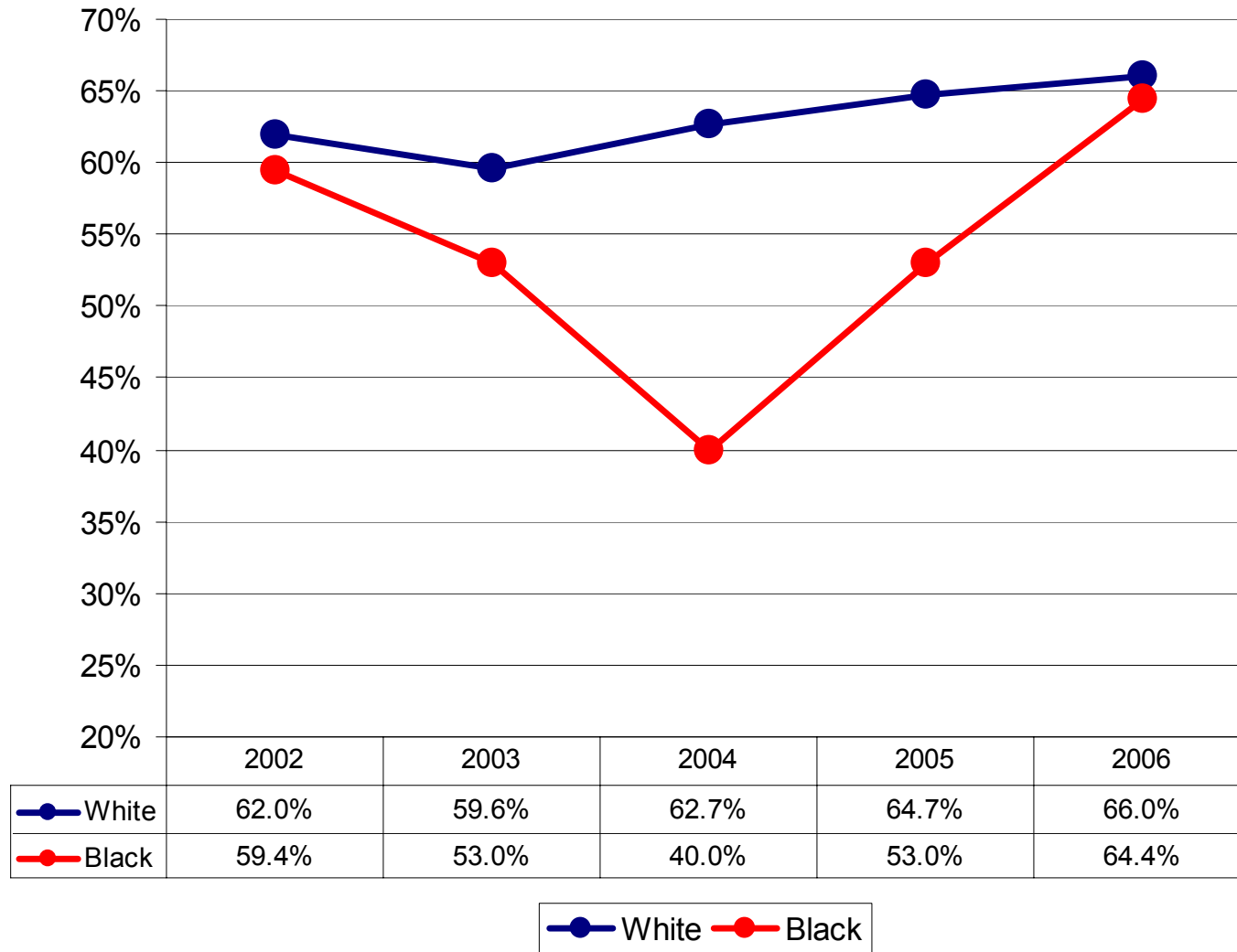
UNCW 4-year graduation rates: Gender versus ethnic differences



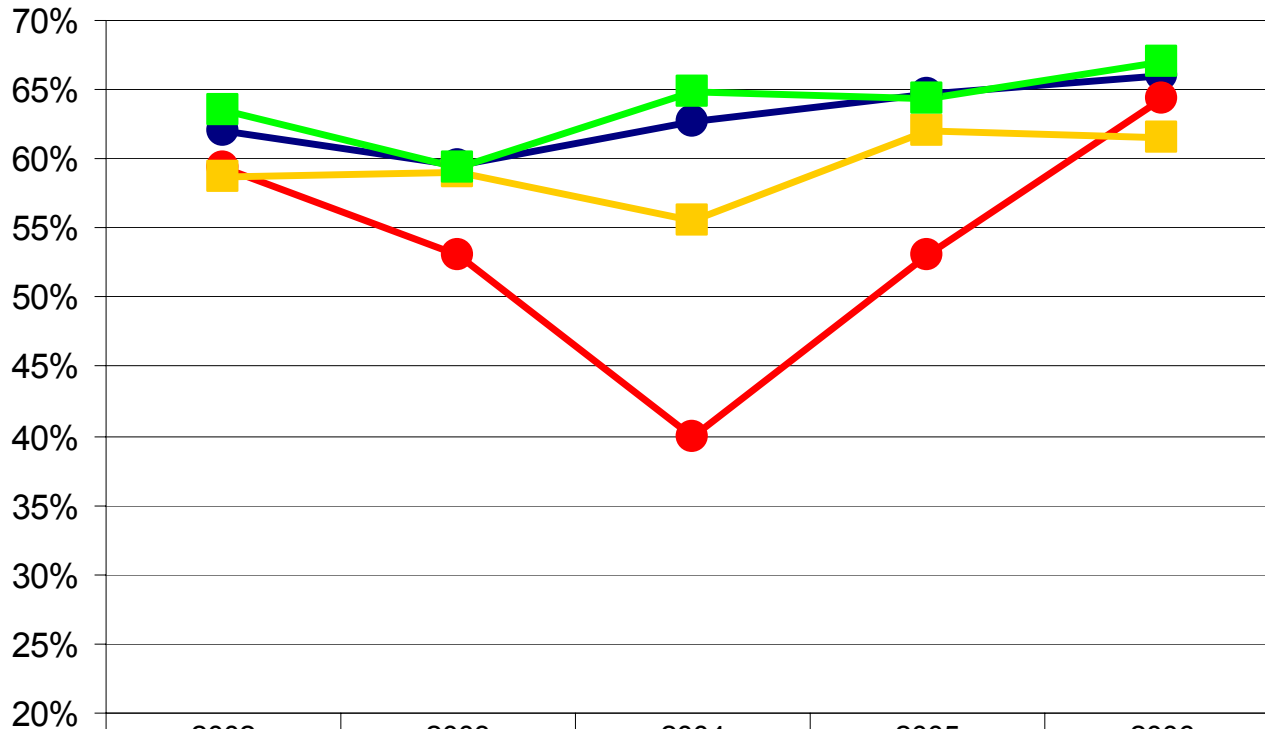
	2002	2003	2004	2005	2006
White	38.2%	41.8%	43.0%	42.3%	45.6%
Black	27.7%	33.3%	50.7%	28.6%	31.0%
Male	27.4%	33.4%	31.8%	27.9%	33.9%
Female	43.6%	45.4%	48.7%	49.6%	51.5%

● White
 ● Black
 ■ Male
 ■ Female

UNCW 6-year graduation rates: Ethnic differences



UNCW 6-year graduation rates: Gender versus ethnic differences



● White	62.0%	59.6%	62.7%	64.7%	66.0%
● Black	59.4%	53.0%	40.0%	53.0%	64.4%
■ Male	58.7%	59.0%	55.6%	62.1%	61.6%
■ Female	63.6%	59.3%	64.8%	64.3%	67.0%

● White
 ● Black
 ■ Male
 ■ Female

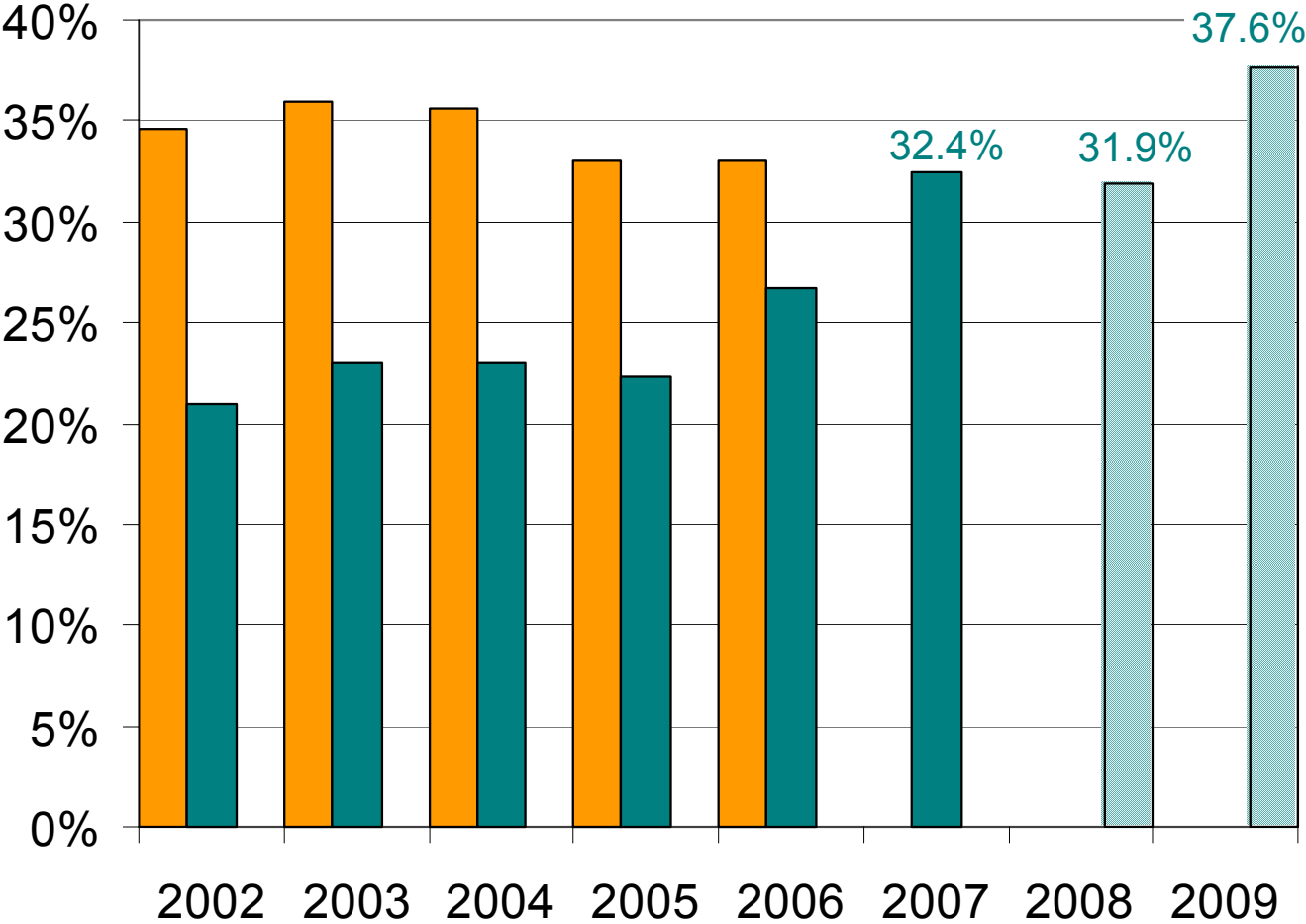
Progress Measure 5

Increase the percentage of undergraduates housed on campus from 23.1% in 2004-05 to 35% by 2009, with a long term target of 40%.



Trend: Percentage of Undergraduates Housed on Campus

(Data from US News and World Report)

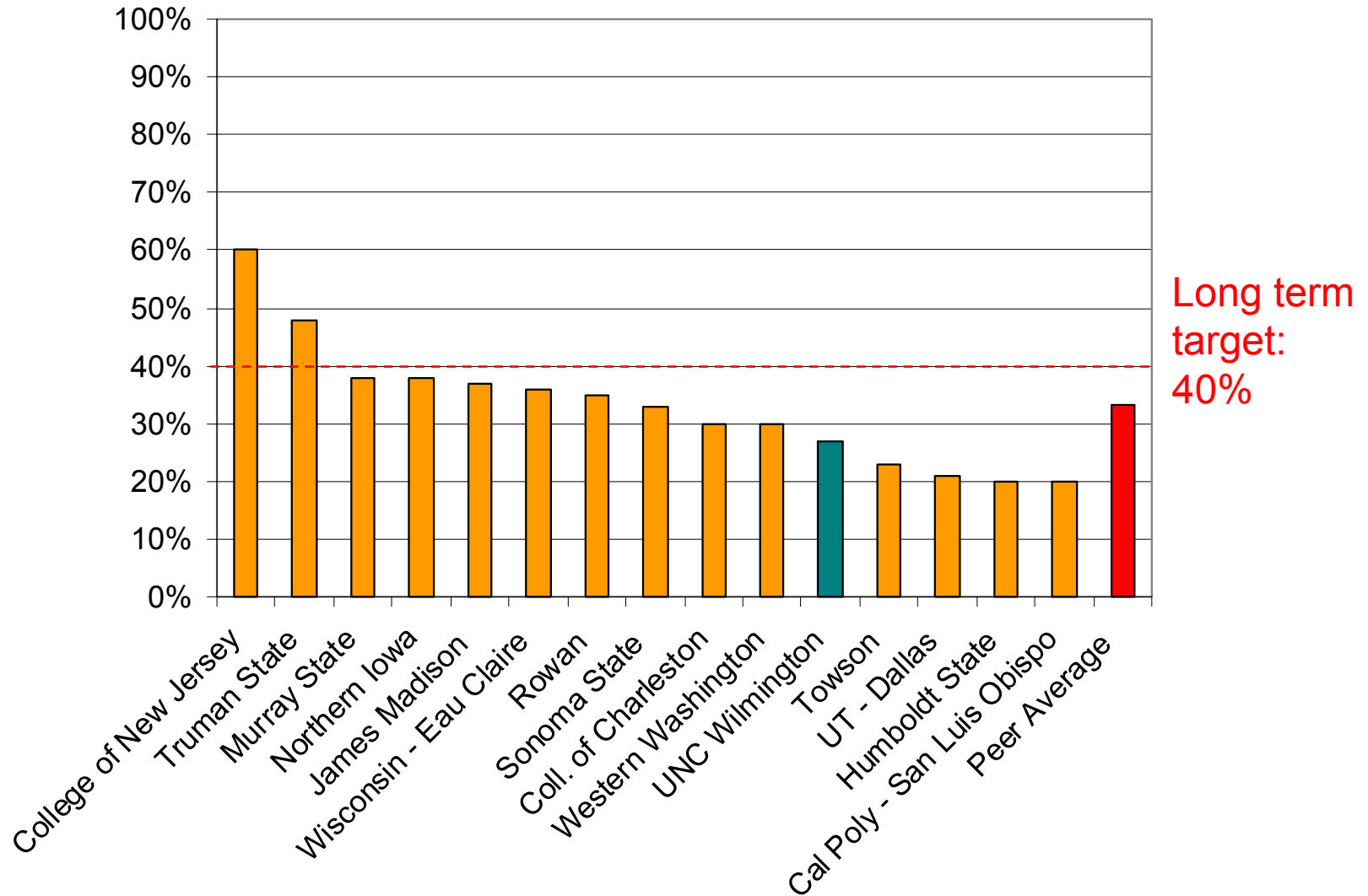


Phase III will exceed the target of 35% in 2009



Fall 2006 Peer Comparison: Percentage of Undergraduates Housed on Campus

(Data from US News and World Report)



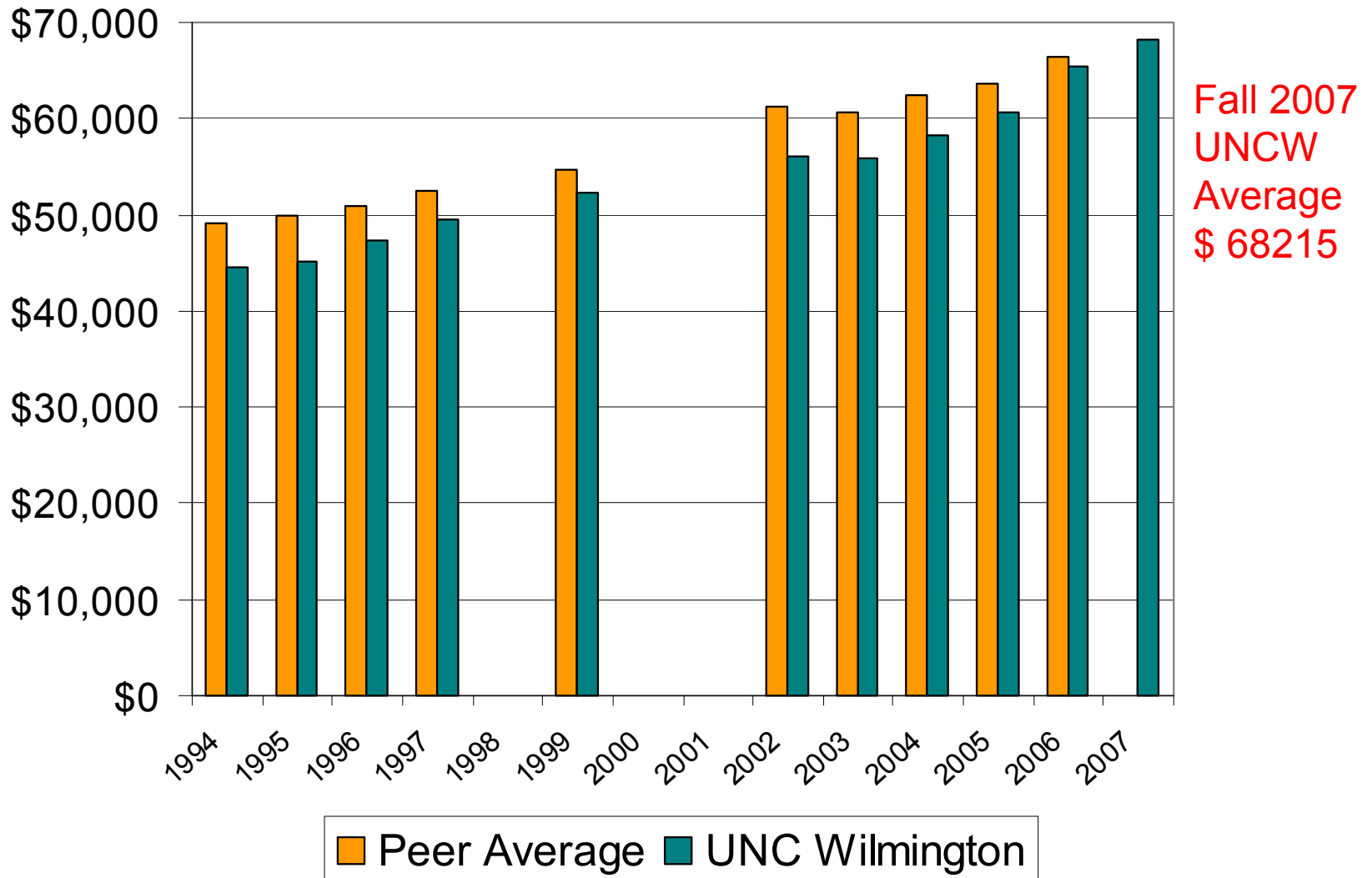
Progress Measure 6

...steadily increase average faculty salaries to the peer group 80th percentile for each rank...



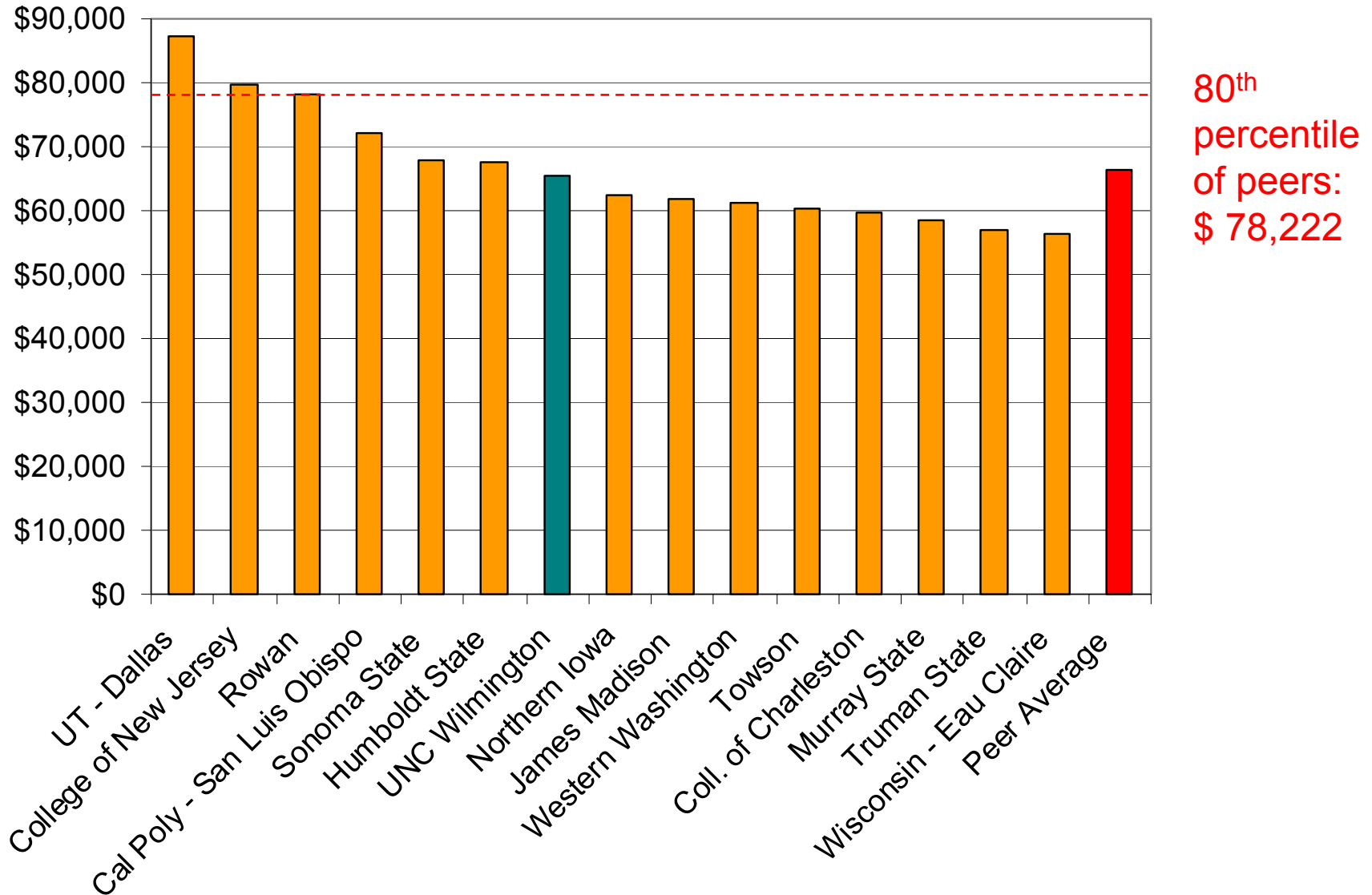
Average Faculty Salary Trend

(Average salary of full time instructional faculty on 9 or 10 month contracts. Data from IPEDS)



2006-07 Faculty Salary Comparison

(Average salary of full time instructional faculty on 9 or 10 month contracts. Data from IPEDS)



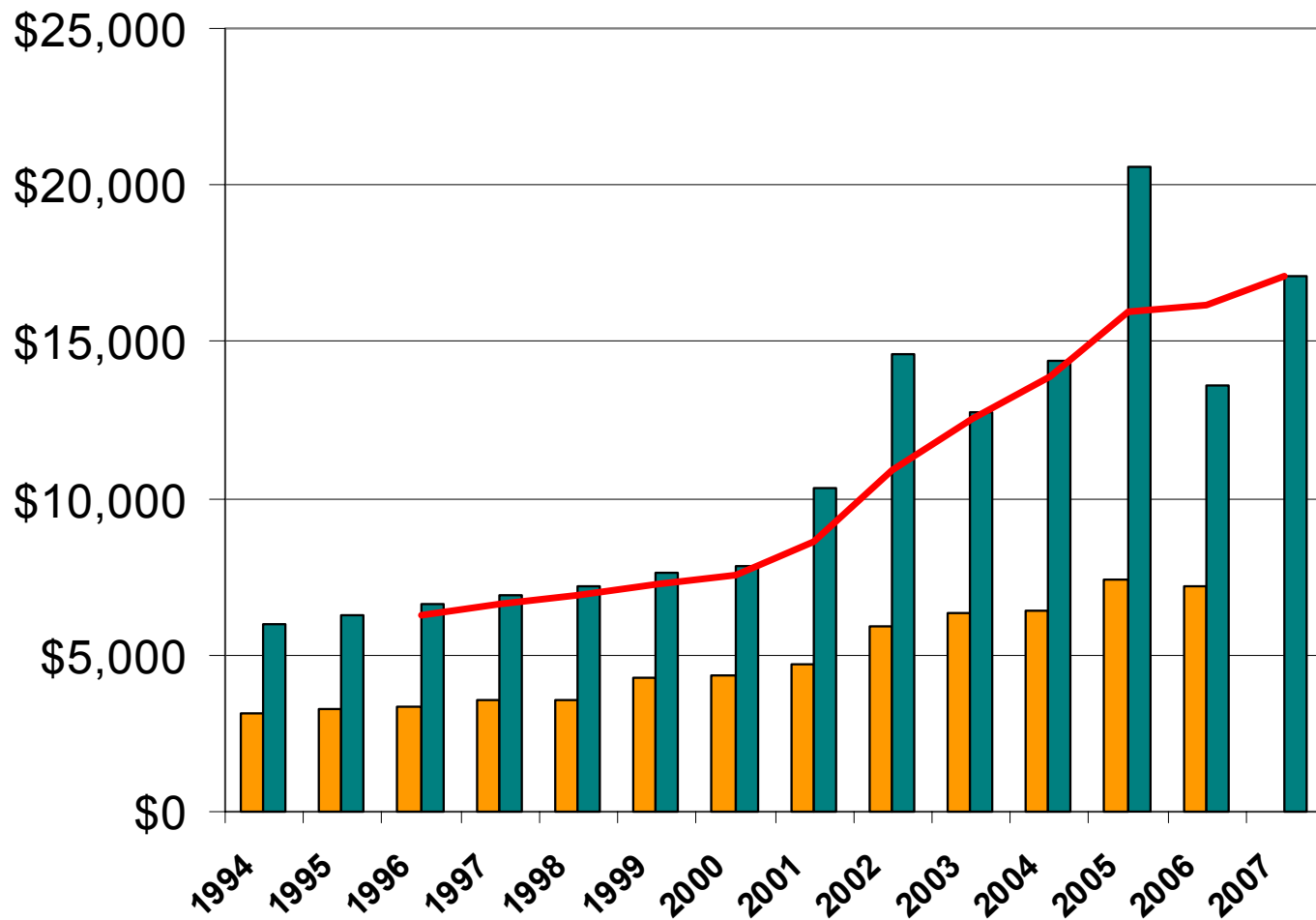
Progress Measure 7

Increase the three-year moving average of total annual R&D expenditures from \$12.5 million in 2001-03 to at least \$20 million by 2009-11.



Total R&D Expenditures Trend

(Dollar amounts in thousands. FY data from NSF WebCASPAR)

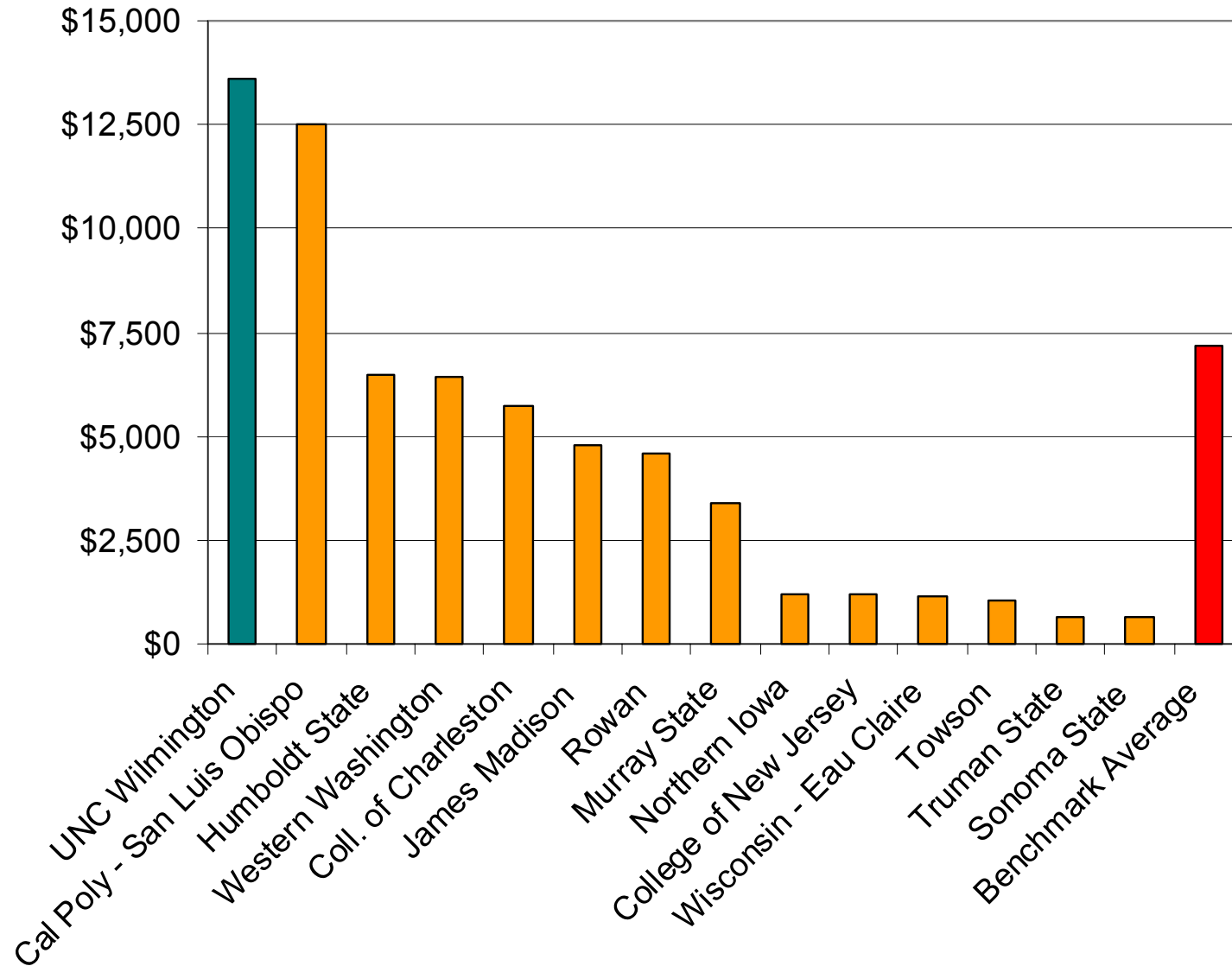


FY2007:
\$17.1
million

Peer Average UNC Wilmington 3-Year Moving Avg.

FY 2006 Total R&D Expenditures Comparison

(Dollar amounts in thousands. Data from NSF WebCASPAR Aspirational peer UT Dallas omitted at \$44.2 million))



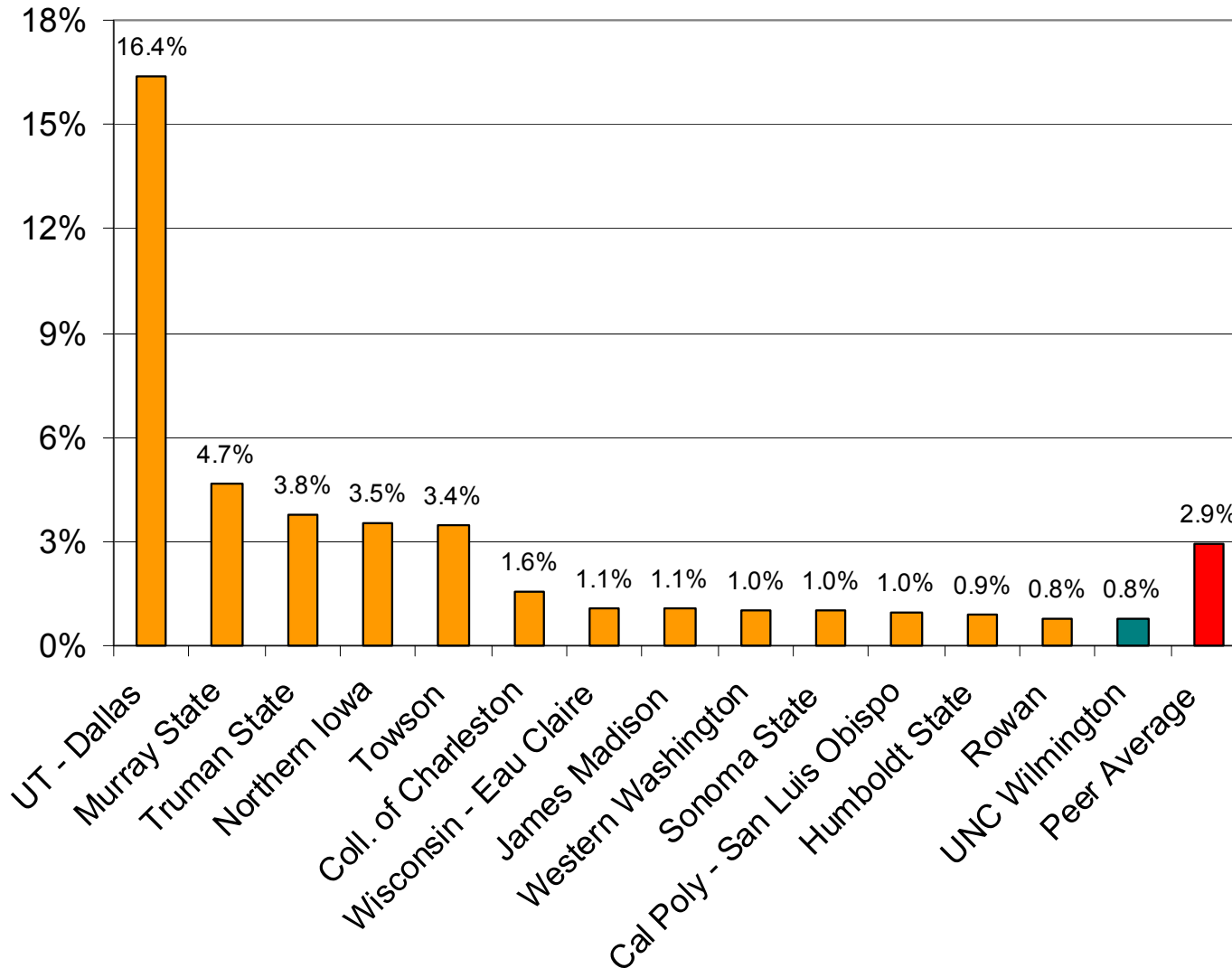
Progress Measure 8

By fall 2010, increase the international student population to 3% of the total student population. Increase the study abroad participation rate to 20% of undergraduates completing UNCW degrees by 2010, and to 25% by 2015.



2006-07 International Enrollment Percentage Comparison

(Data from Institute of International Education
Open Doors 2007 Web site)



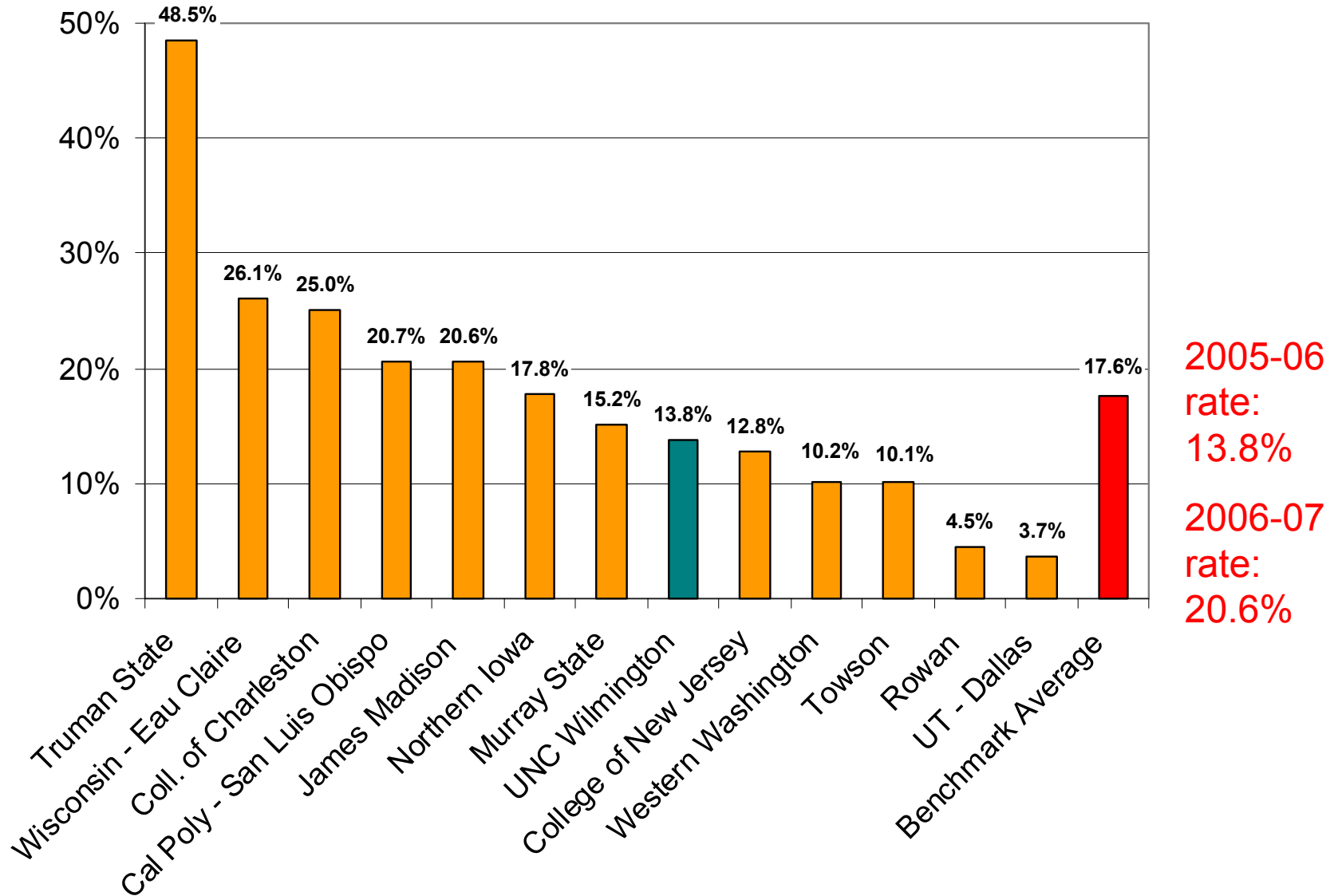
2006-07:
0.8%

2007-08:
1.1%

2005-06 Study Abroad Participation Rate Comparison

(Data from Institute of International Education

Open Doors 2007 web site. Data unavailable for Humboldt, Sonoma)



Progress Measure 9

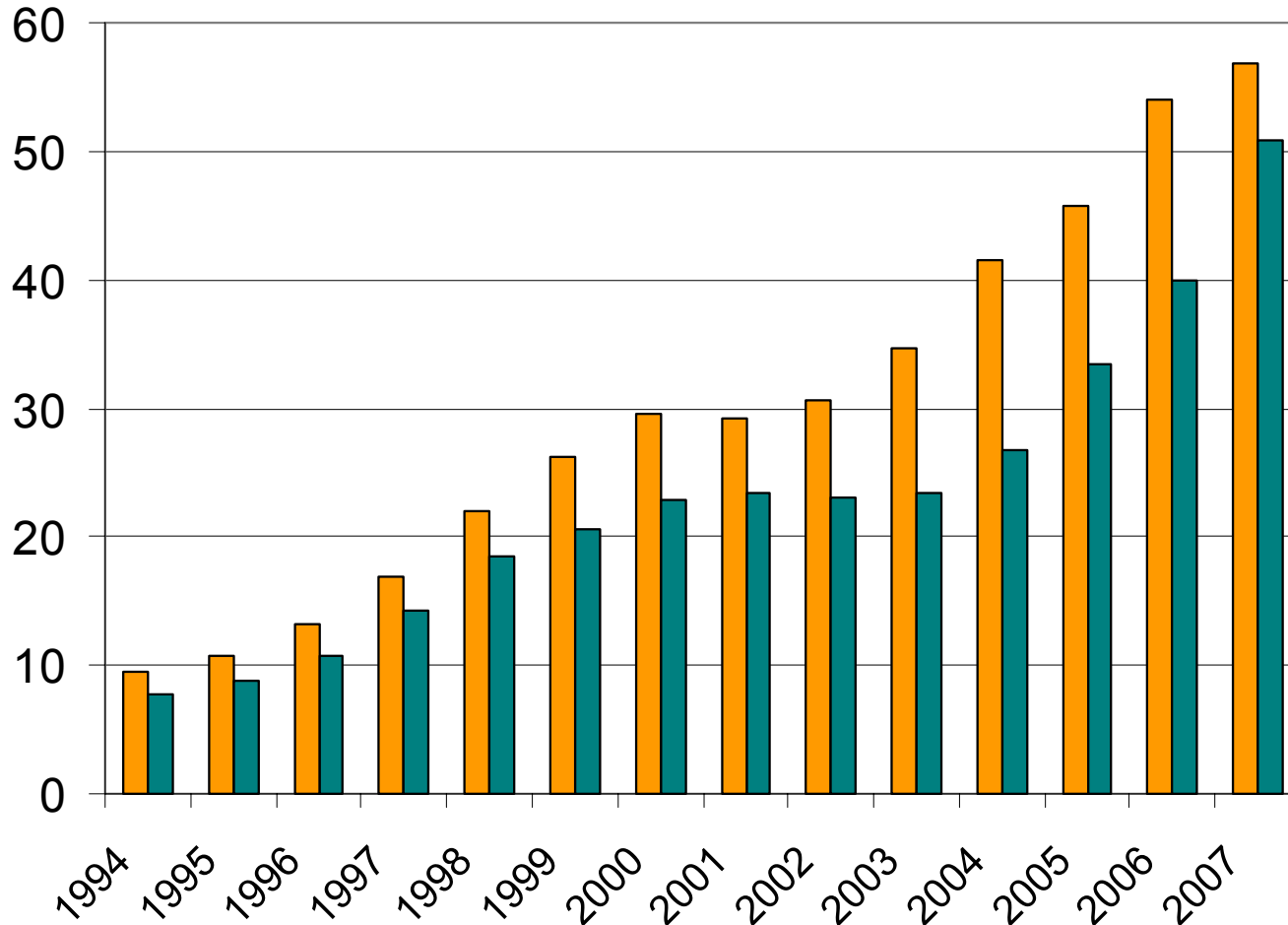
Raise significant additional endowment for diversity and merit scholarships, with a campaign to be completed by 2013.



Endowment Trend (\$ millions)

(End of Fiscal Year Market Value. Data from CAE)

Average excludes UT Dallas (\$264 M)



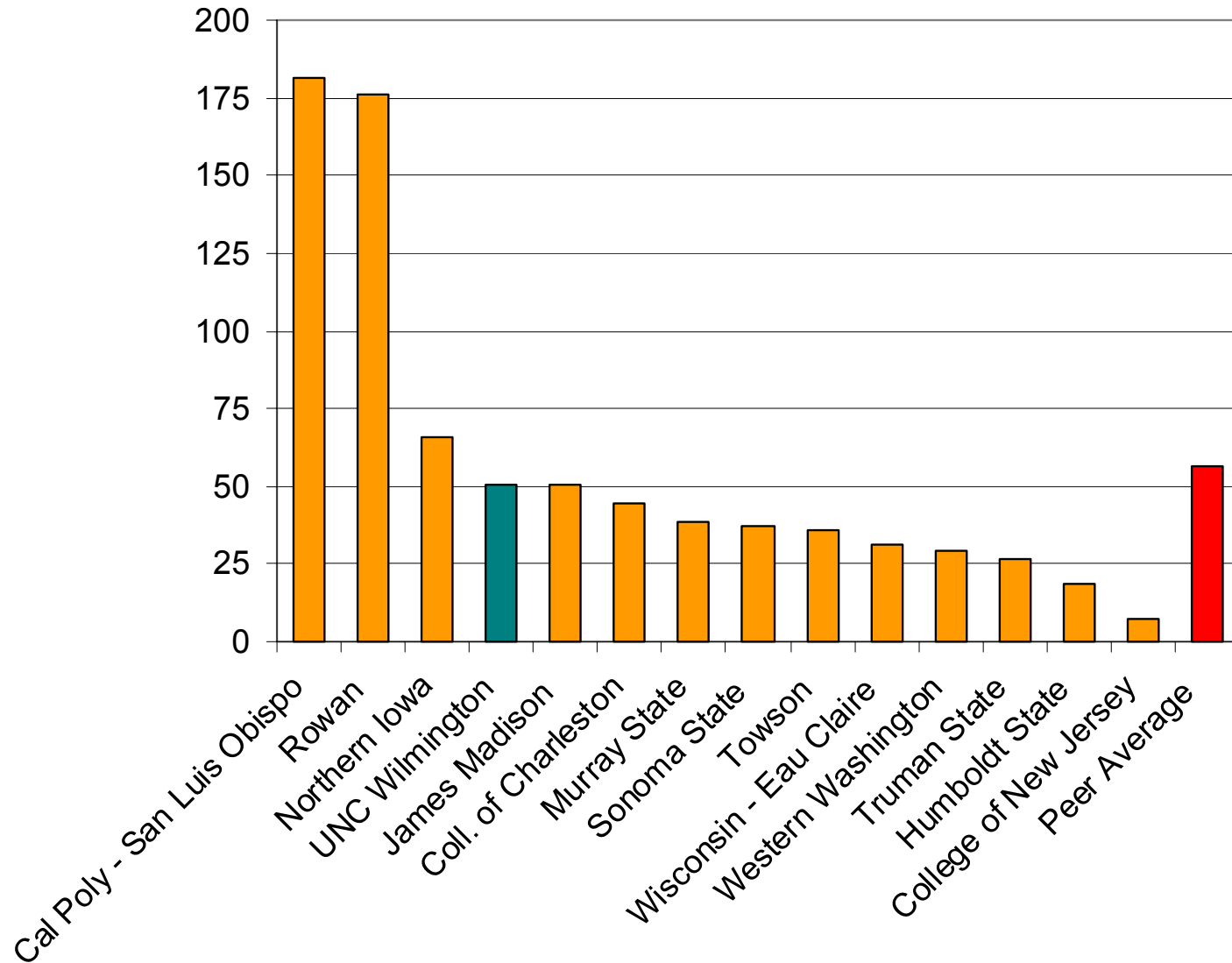
UNCW's endowment as of 12/31/07 was \$51.8M

Peer Average UNC Wilmington

2007 Endowment Comparison (\$ millions)

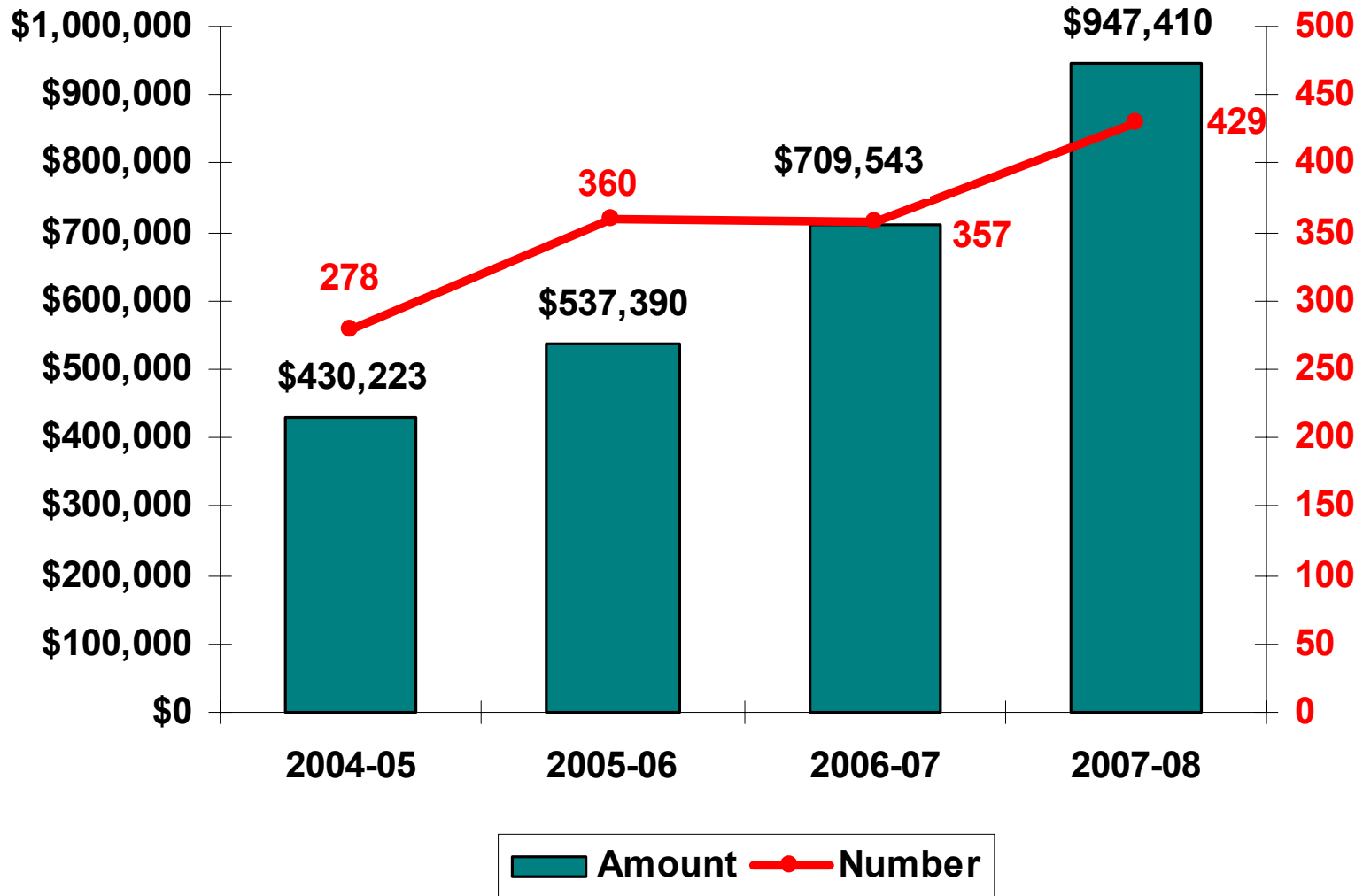
(End of Fiscal Year Market Value. Data from CAE)

Excludes UT Dallas (\$264 M)



Total Non-Need Based (Merit) Aid Awarded to UNCW Undergraduates from Endowment Funds

(Excludes athletic awards. Data from UNCW Financial Aid Office)

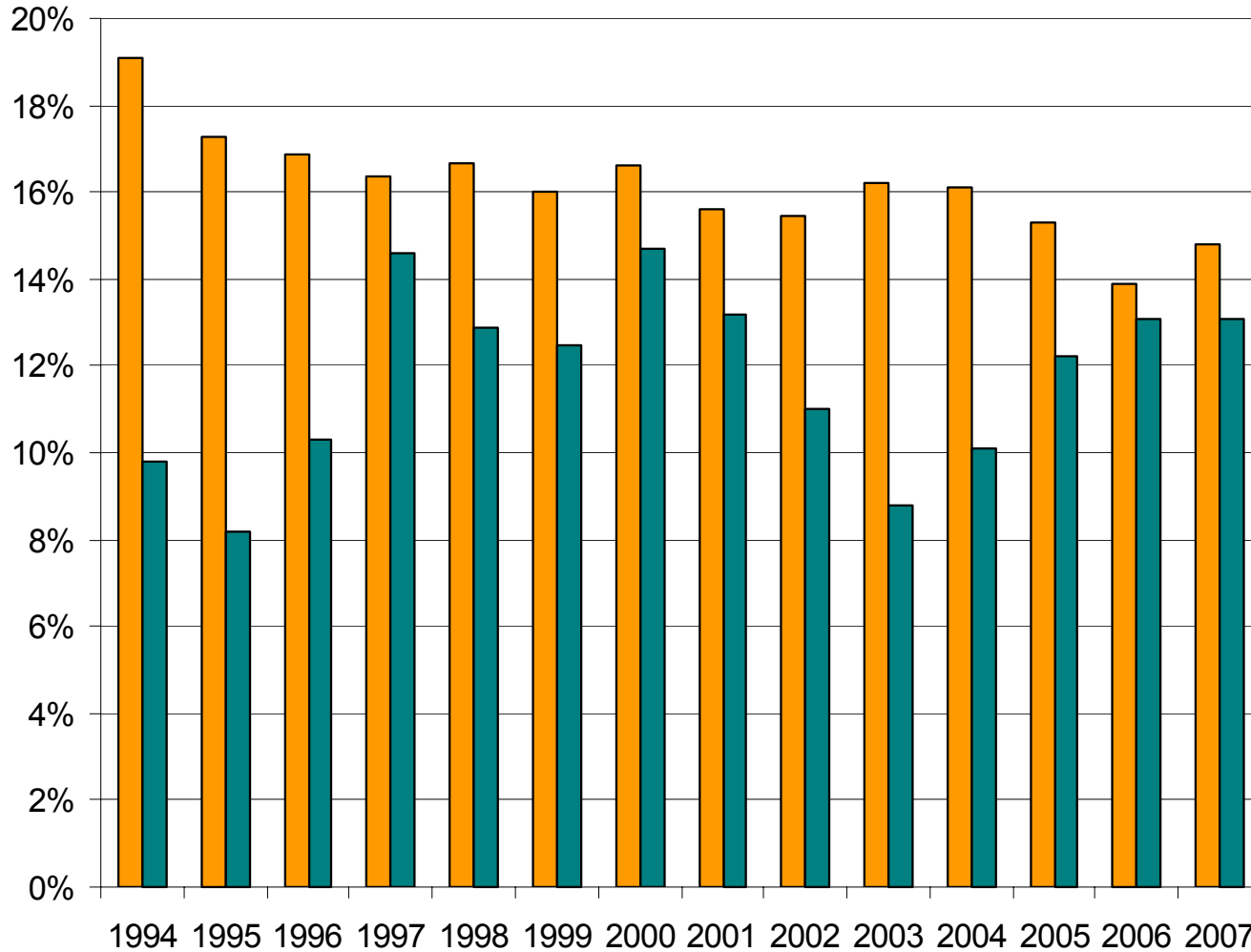


Progress Measure 10

Increase the alumni giving rate to at least 16% by FY 2008, and to a level in excess of 16% by FY 2010.



Alumni Giving (donors as a % of solicited) (Data from CAE)



UNCW
FY07
Alumni
Giving
Rate:
13.1%

Peer Average UNC Wilmington

2007 Alumni Giving Comparison

(Data from CAE, except Coll. of Charleston, Coll. of New Jersey, and Sonoma State data from US News)

