

Strategic Planning Update



**Selected Progress Measures Related to
the Upcoming Campaign**

**UNCW Board of Trustees
January 20, 2006**

Benchmark Institutions

Recommended to BOG by UNC General Administration, January 2006

- Cal Poly – San Luis Obispo #1 West
- College Of Charleston
- College of New Jersey #1 North
- Humboldt State
- James Madison #1 South
- Murray State
- Coll. of William and Mary
- Northern Iowa
- Rowan
- Sonoma State
- Towson
- Truman State #1 Midwest
- UT – Dallas Research Univ.
- Wisconsin – Eau Claire
- Western Washington

UNCW's Ten Progress Measures Address:

1. Student-faculty ratio
2. Student-staff ratio
3. Diversity
4. Retention and Graduation rates
5. Campus housing
6. Salaries
7. Research expenditures
8. International students and study abroad
9. Endowment for scholarships
10. Alumni giving

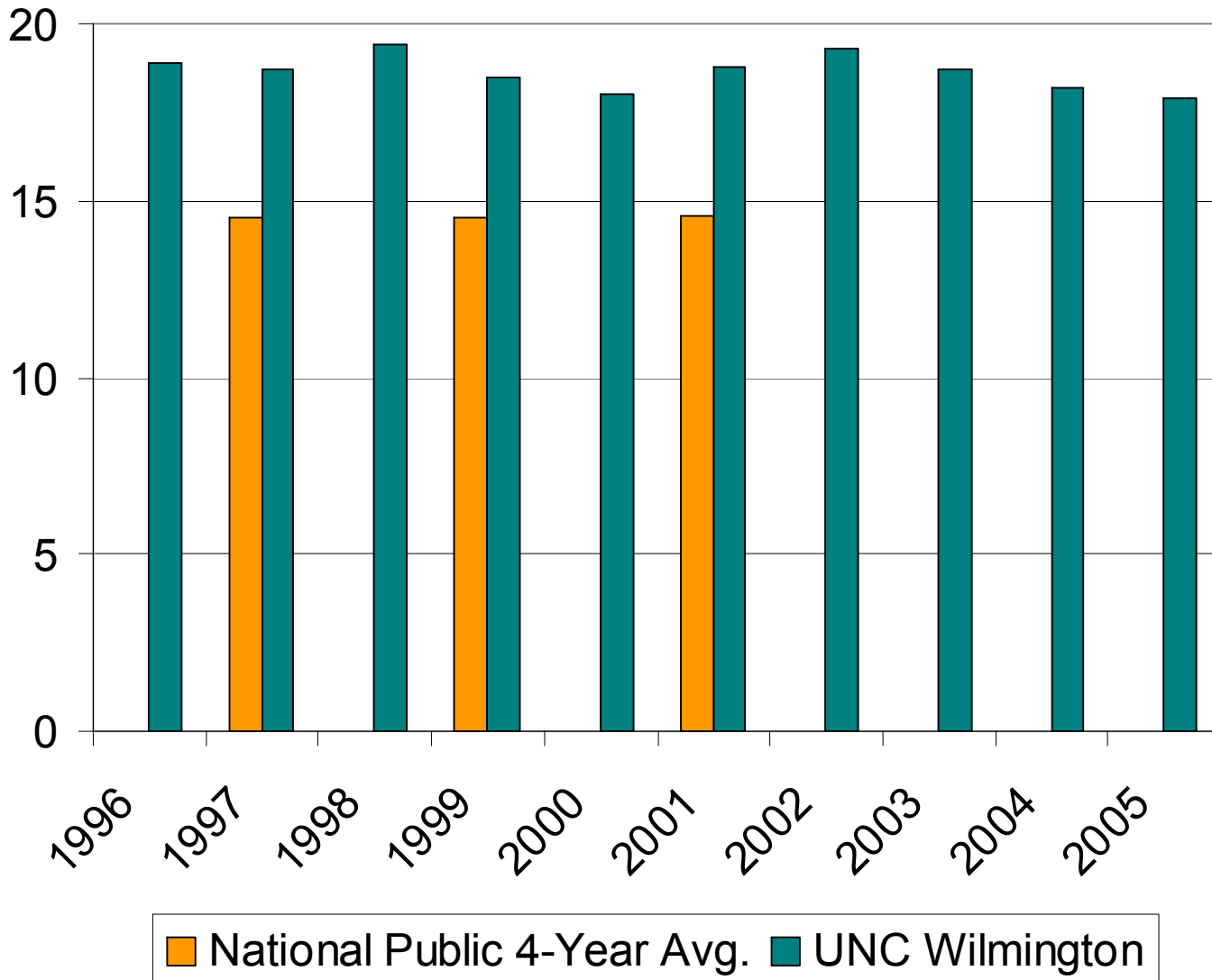
Progress Measure 1

Improve the student-faculty ratio from 18.2 to 1 in 2004-05 to 17.2 to 1 by 2007, with a long term target of 16 to 1.



Student-Faculty Ratio Trend

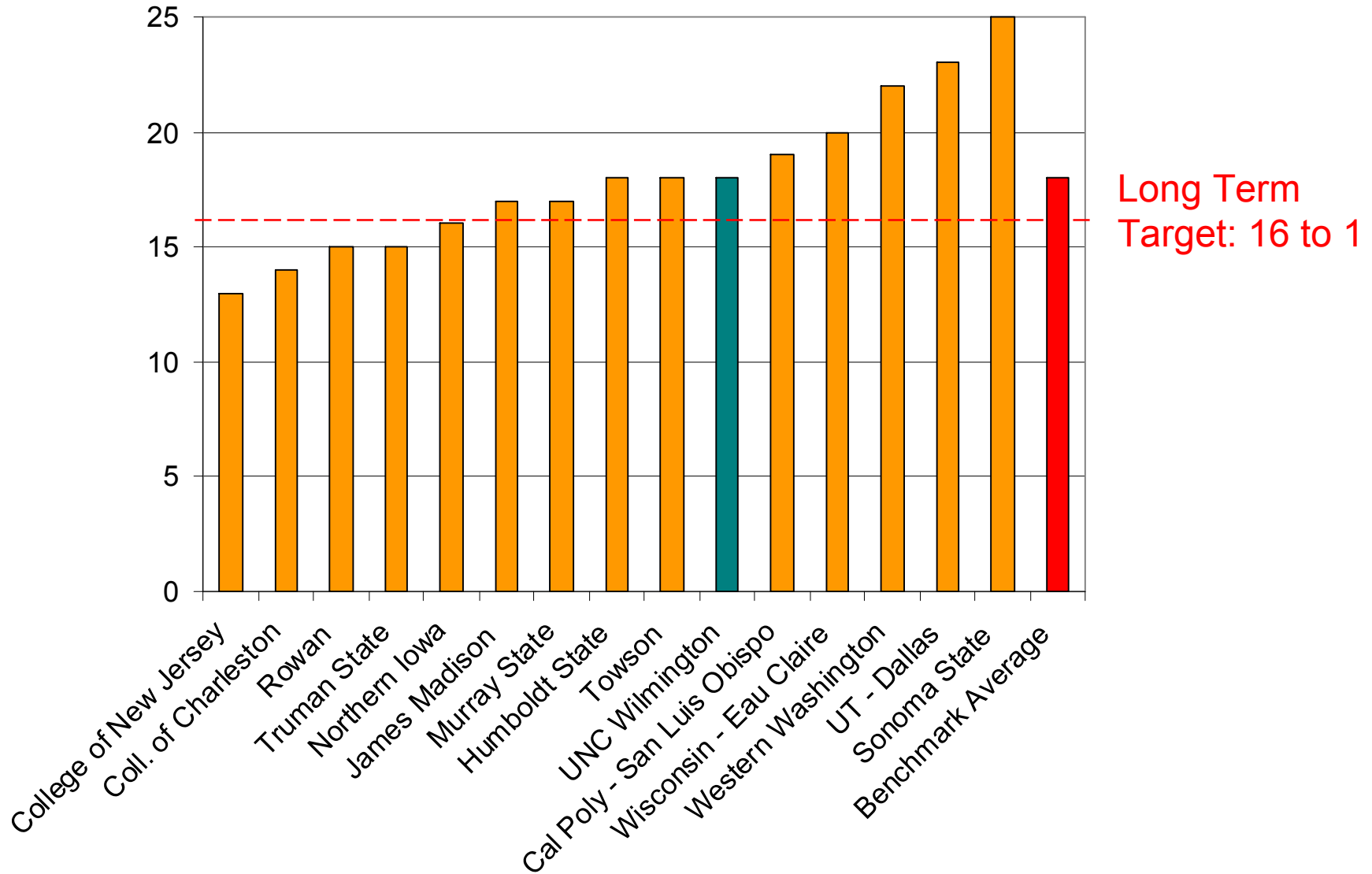
(UNCW data from OIR. National data from NCES Digest of Educational Statistics)



Fall 2005
UNCW S-F
ratio was
17.9 to 1

Fall 2004 Student-Faculty Ratio Comparison

(Data from US News and World Report.)

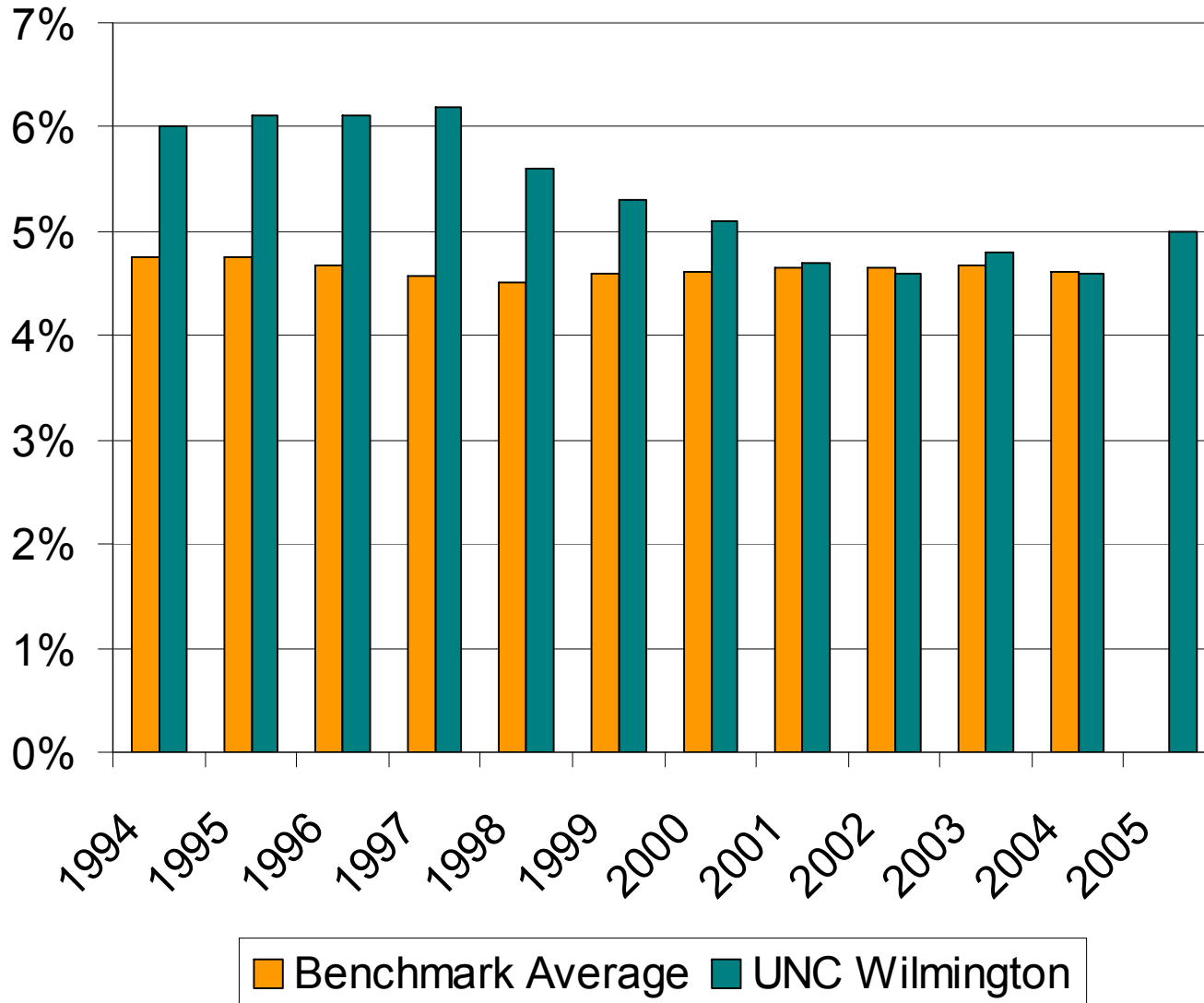


Progress Measure 3

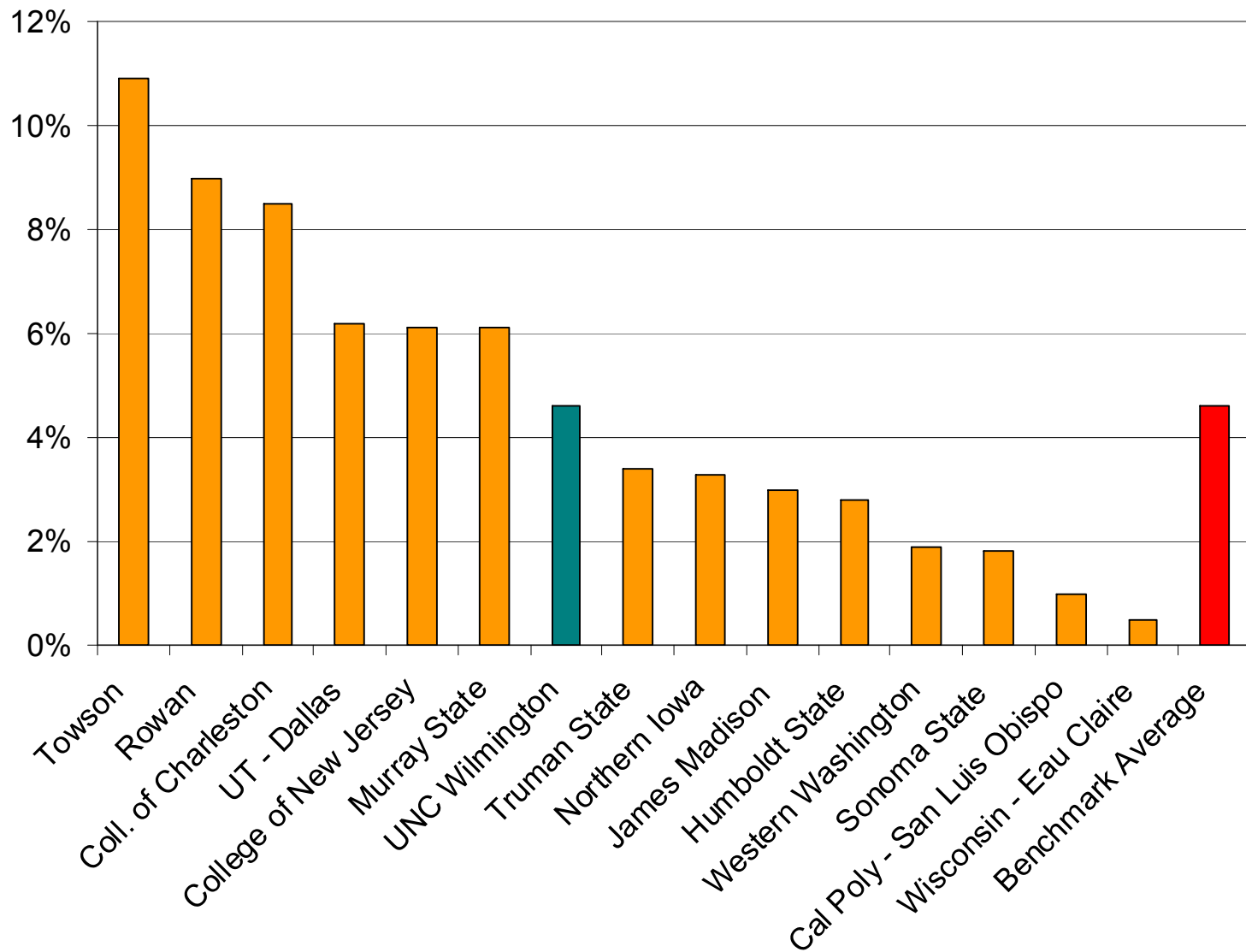
...increase the proportion of student enrollments from historically underrepresented groups to achieve a critical mass necessary to enrich the education of all UNCW students.



Trend: Percentage of Total Enrolled Who Are Black, Non-Hispanic
(Data from IPEDS.)



Fall 2004 Comparison: Percentage of Total Enrolled Who Are Black, Non-Hispanic (Data from IPEDS.)



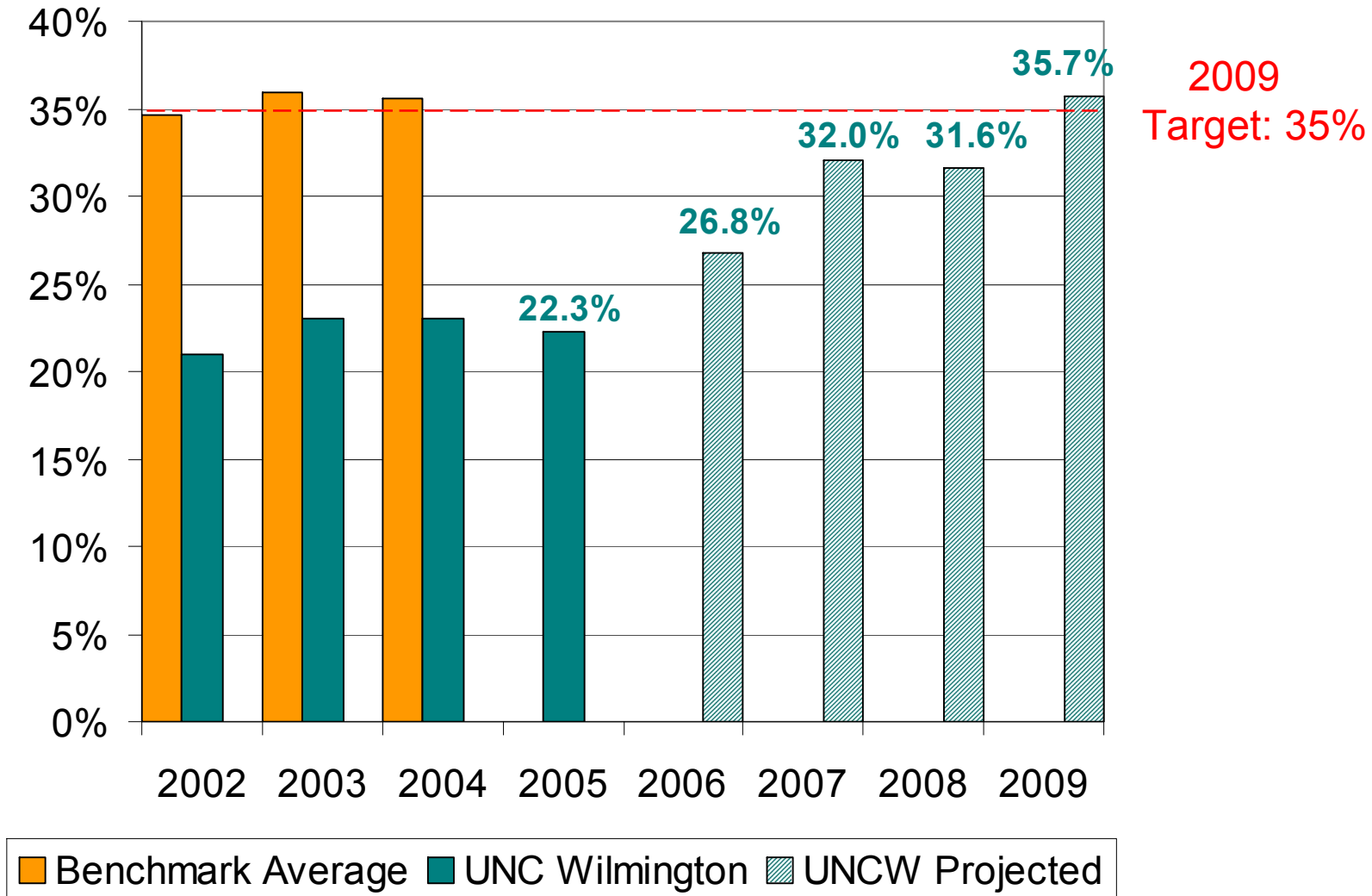
Progress Measure 5

Increase the percentage of undergraduates housed on campus from 23.1% in 2004-05 to 35% by 2009, with a long term target of 40%.



Trend: Percentage of Undergraduates Housed on Campus

(Data from US News and World Report.)



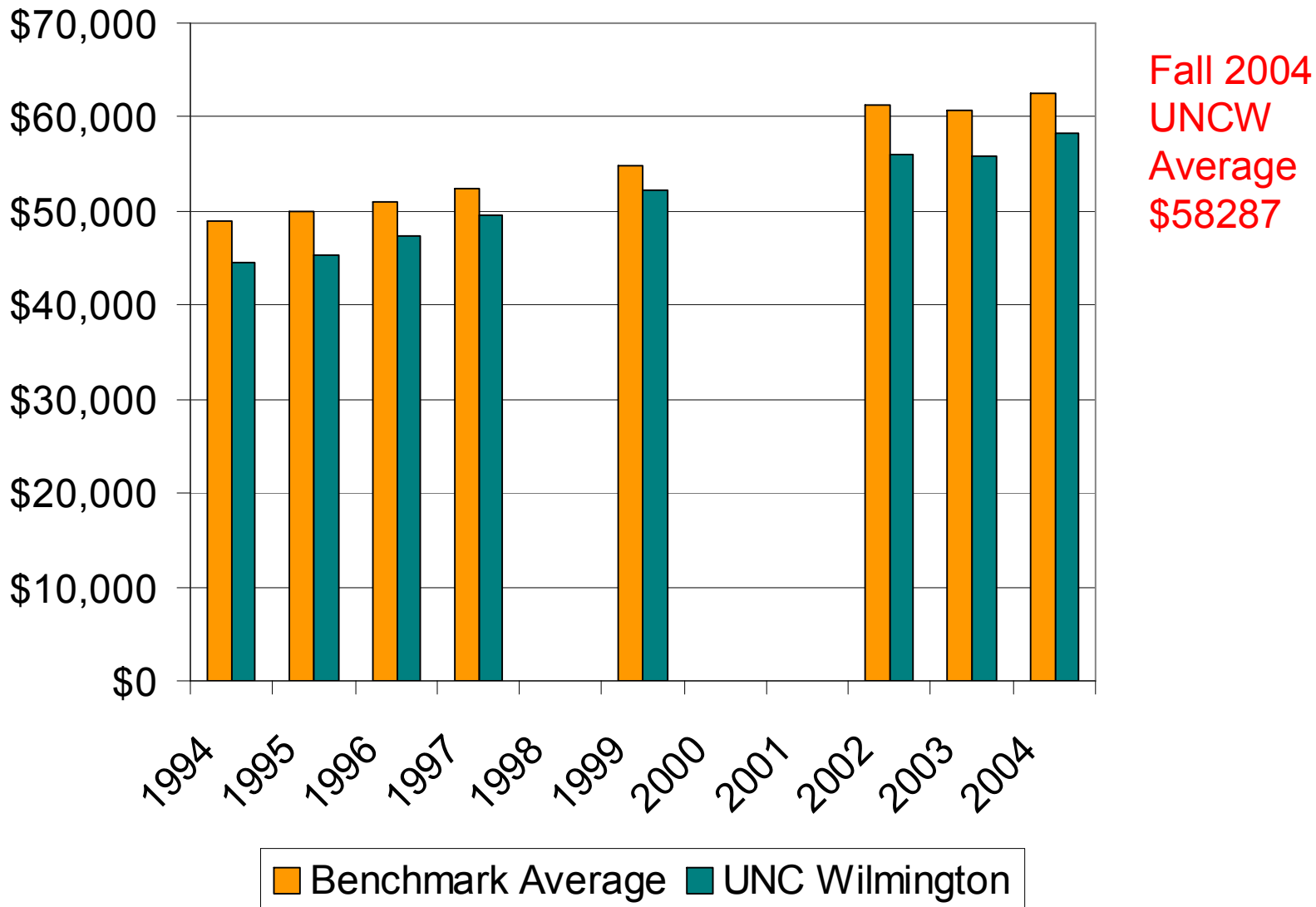
Progress Measure 6

...steadily increase average faculty salaries to the peer group 80th percentile for each rank...



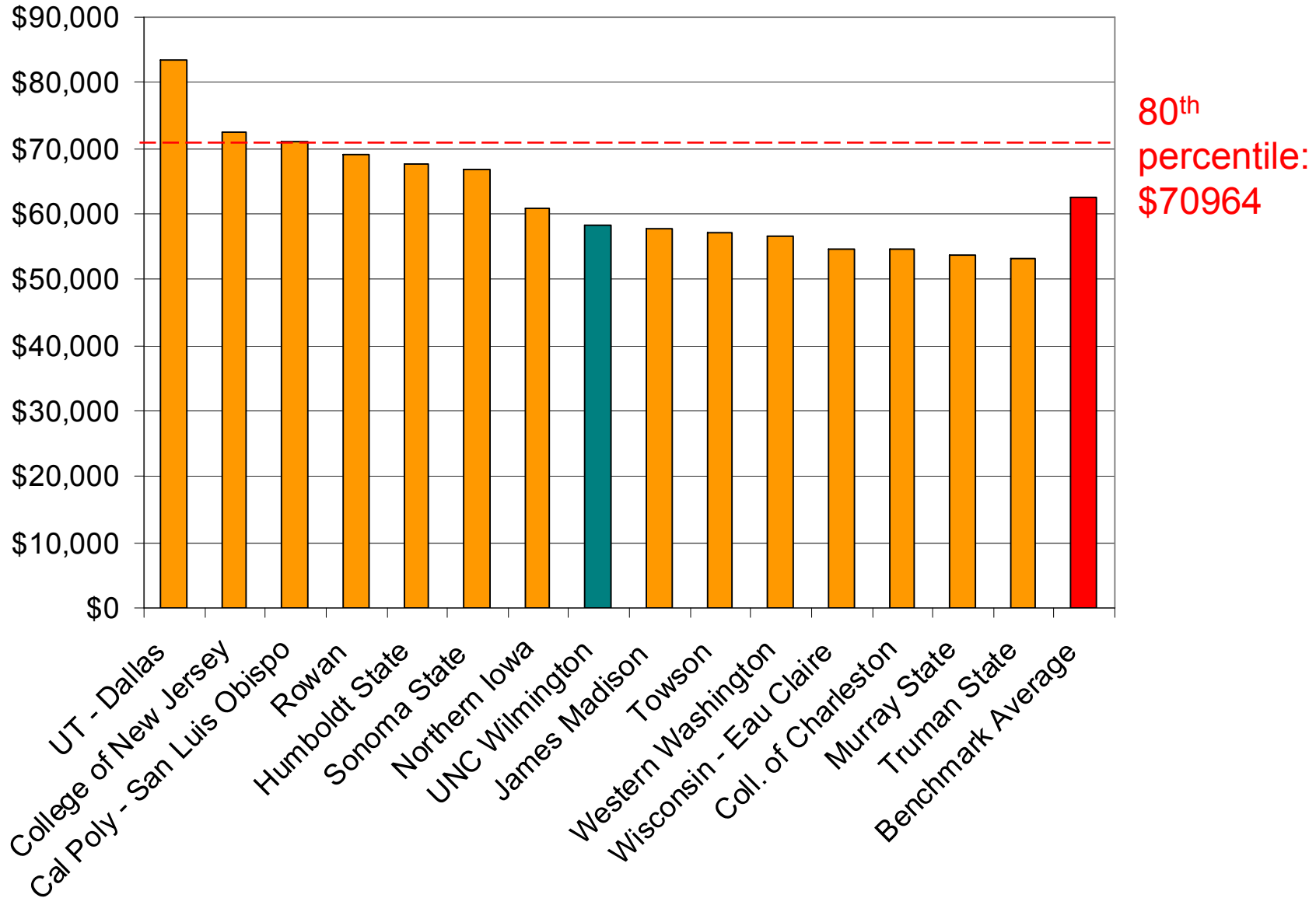
Average Faculty Salary Trend

(Average salary of full time instructional faculty on 9 or 10 month contracts. Data from IPEDS.)



2004 Faculty Salary Comparison

(Average salary of full time instructional faculty on 9 or 10 month contracts. Data from IPEDS.)



Progress Measure 9

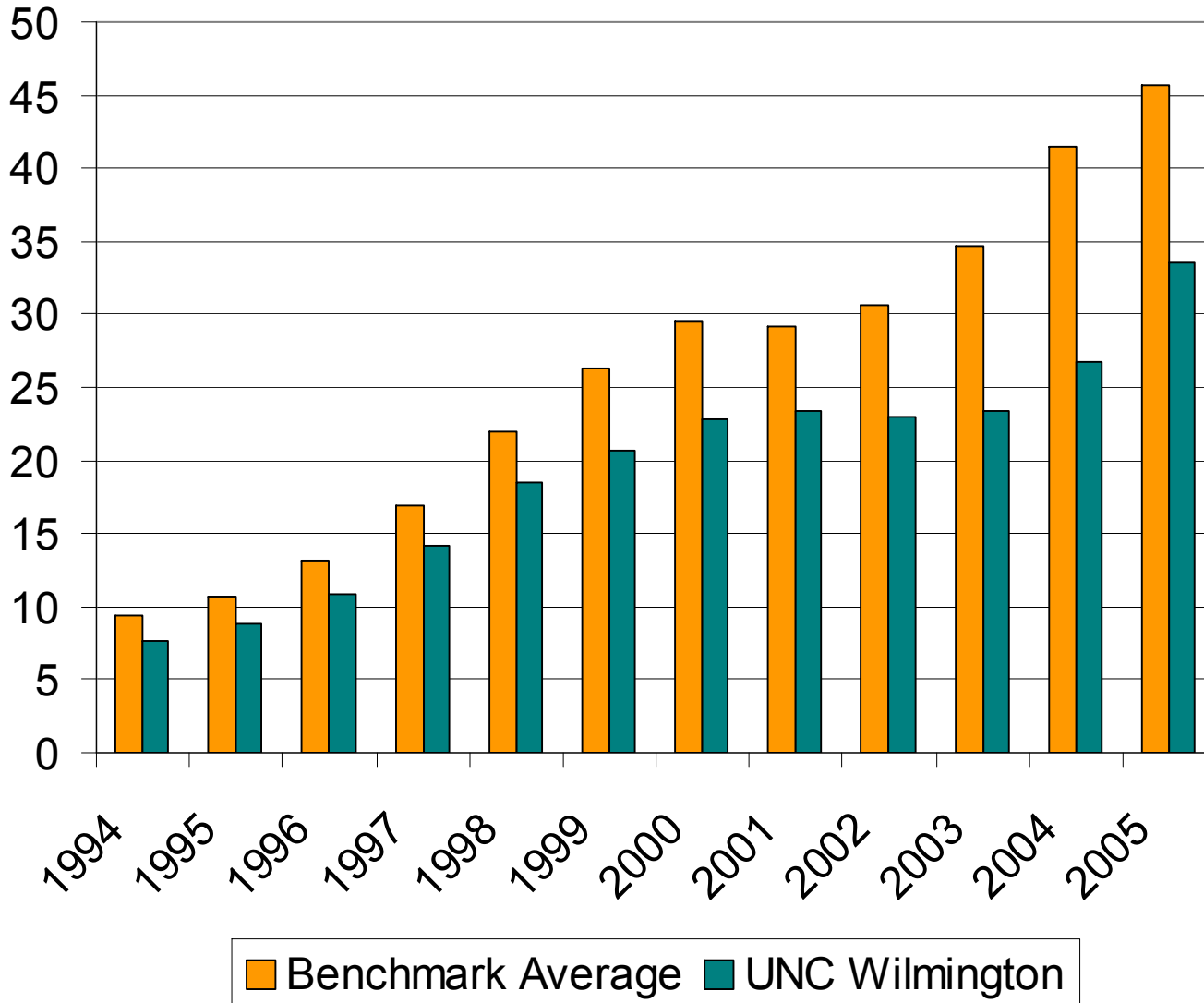
Raise significant additional endowment for diversity and merit scholarships, with a campaign to be completed by 2013.



Endowment Trend (\$ millions)

(End of Fiscal Year Market Value. Data from CAE.)

Average excludes UT Dallas (\$222 M)

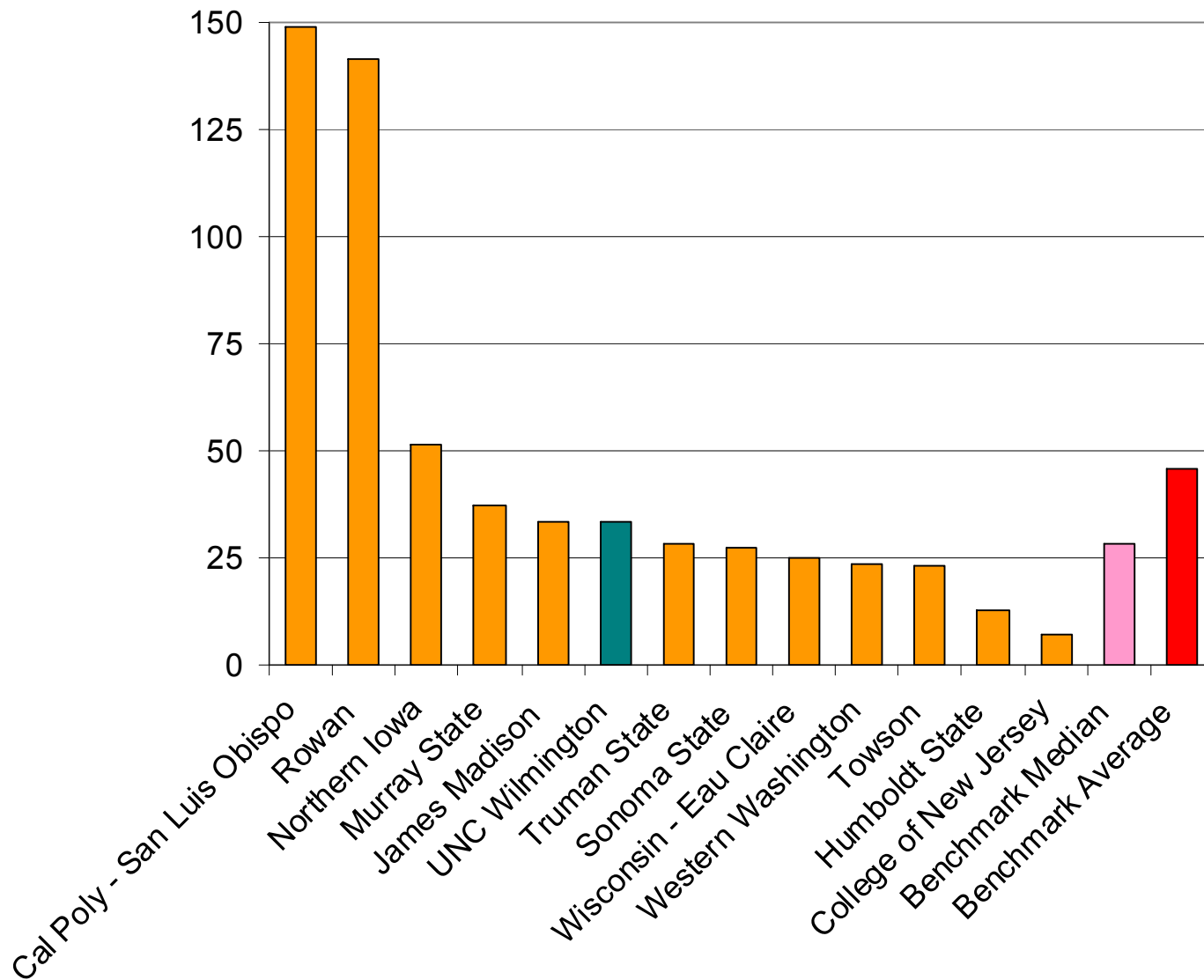


UNCW's endowment increased \$10.1M from \$23.4M in FY03 to \$33.5M in FY05

2005 Endowment Comparison (\$ millions)

(End of Fiscal Year Market Value. Data from CAE.)

Excludes UT Dallas (\$222 M) and College of Charleston (incomplete data)



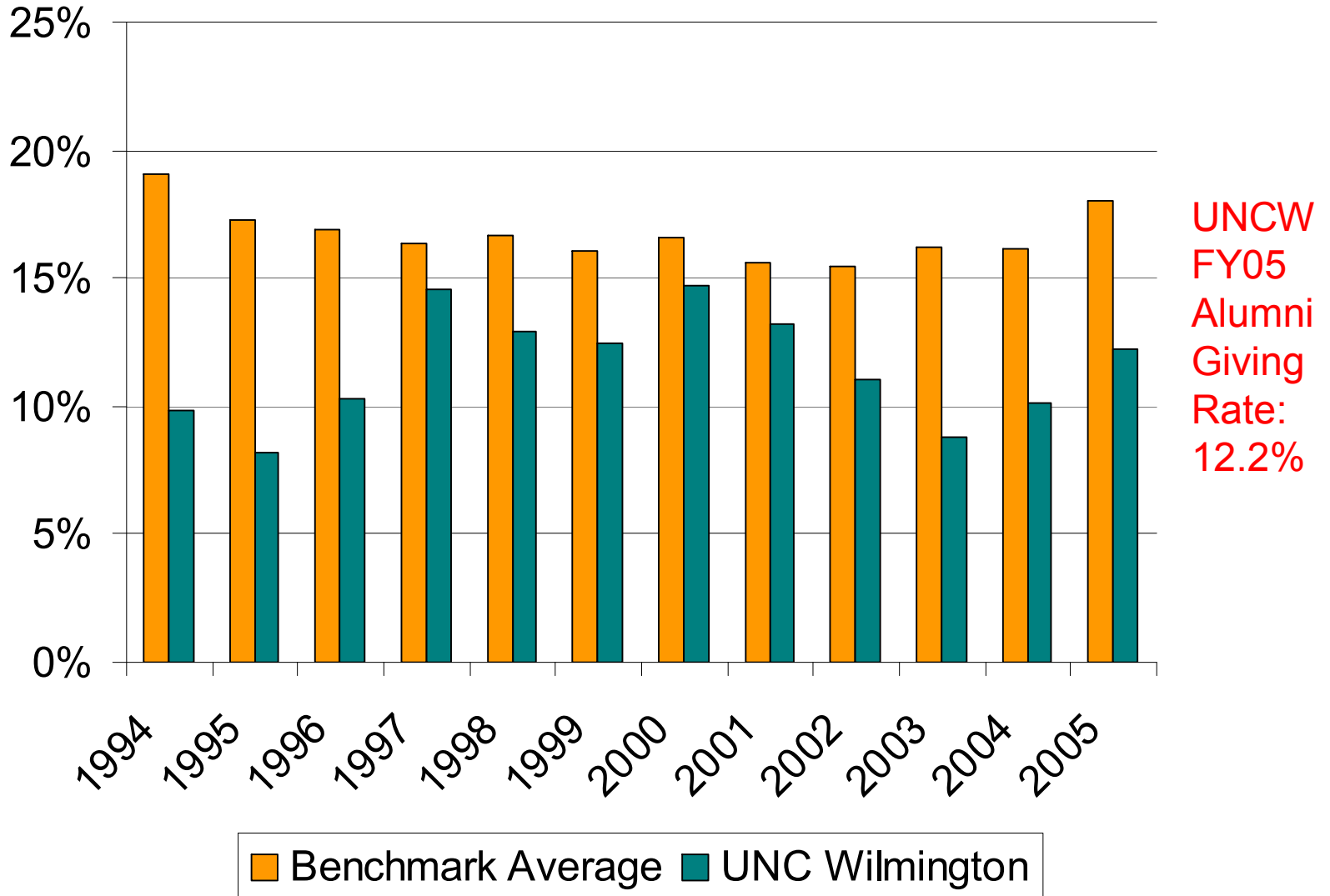
Progress Measure 10

Increase the alumni giving rate to at least 16% by FY 2008.



Alumni Giving (donors as a % of solicited)

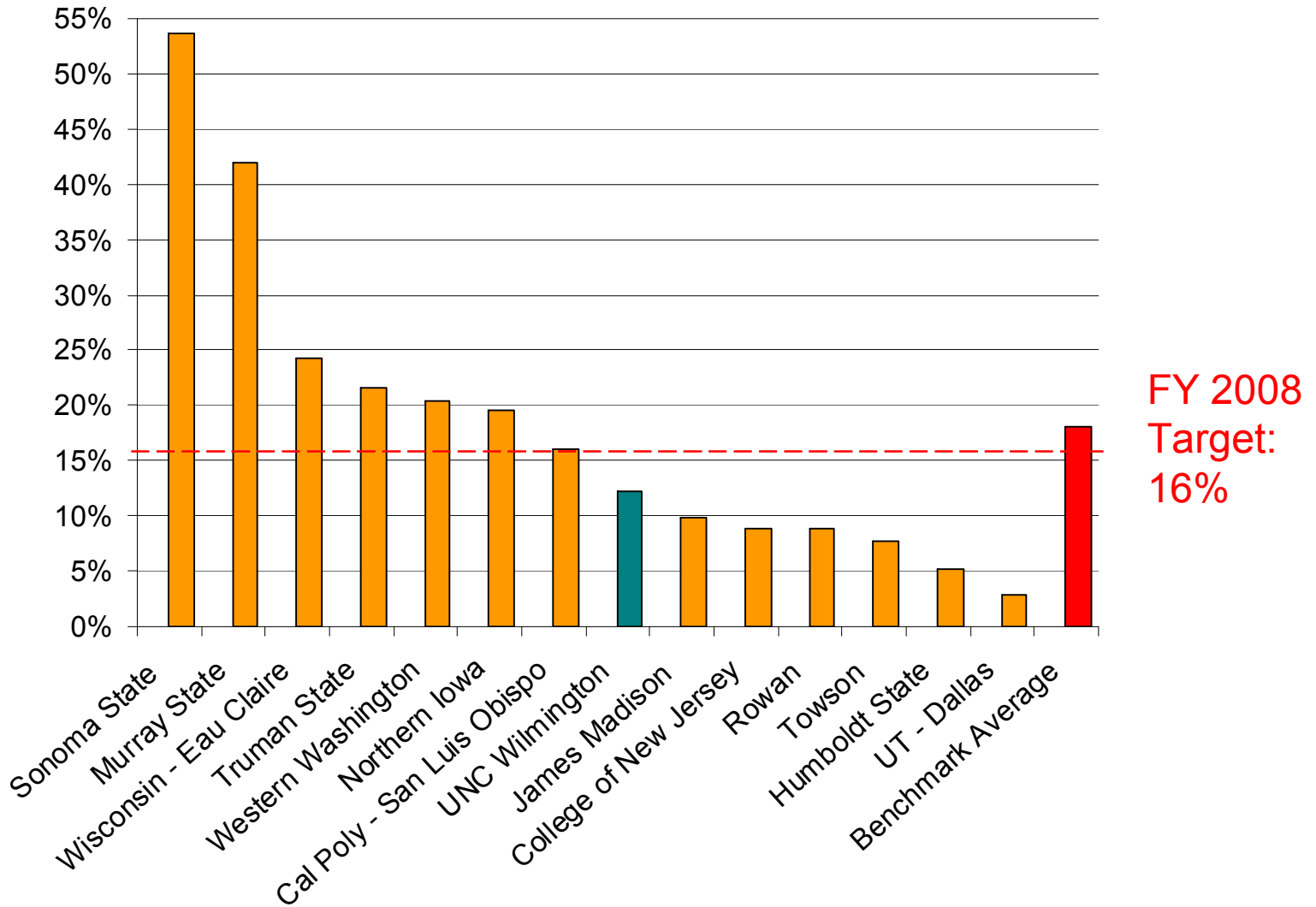
(Data from CAE.)



2005 Alumni Giving Comparison

(Data from CAE.)

Excludes College of Charleston (incomplete data)



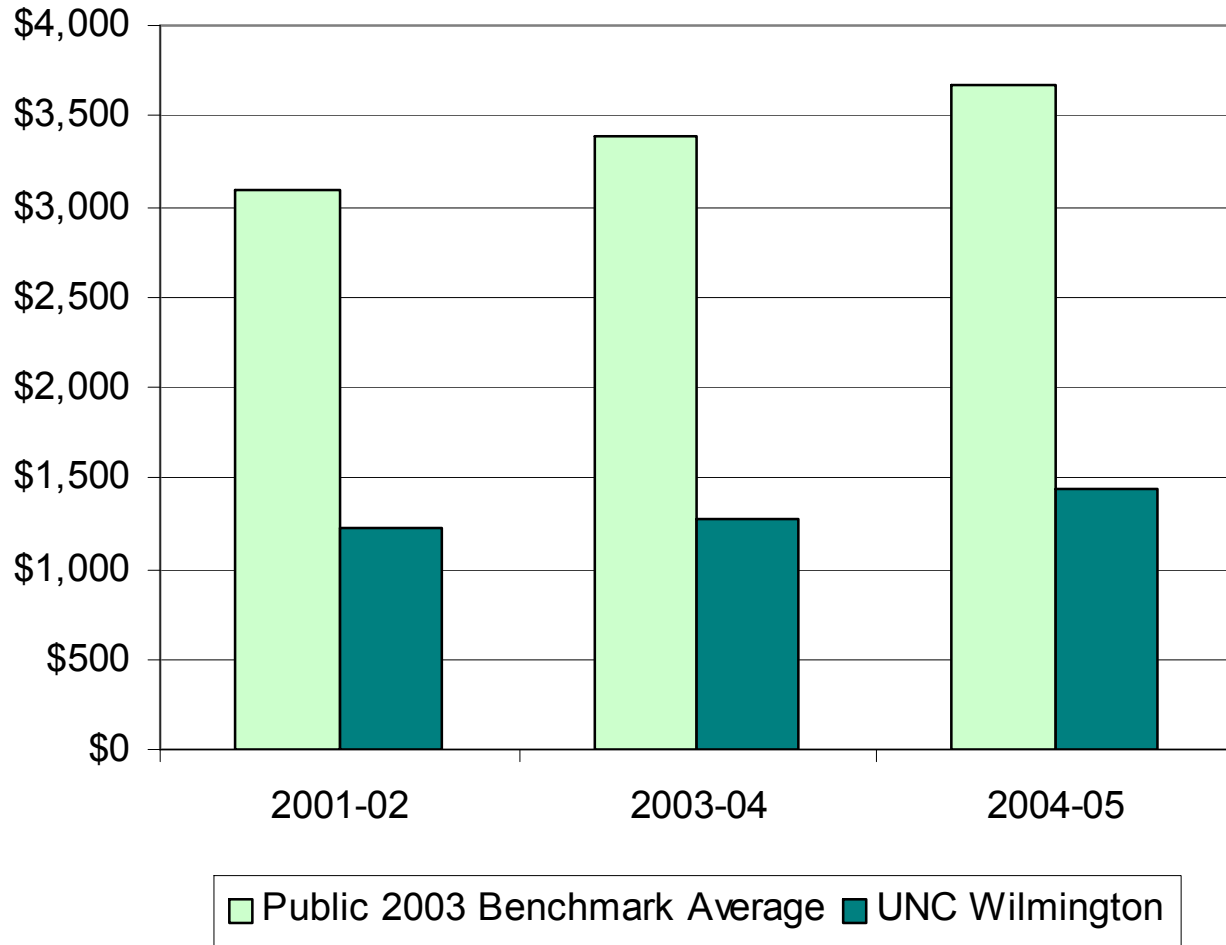
Additional information related to the comprehensive campaign

- Average freshman merit award trend
- Percent receiving freshman merit award trend
- Average freshman merit award comparison
- Percent receiving freshman merit award comparison
- Percent freshmen receiving any financial aid comparison
- Corporate giving comparison
- Number of endowed professorships comparison

Different benchmark institutions may be used for some indicators

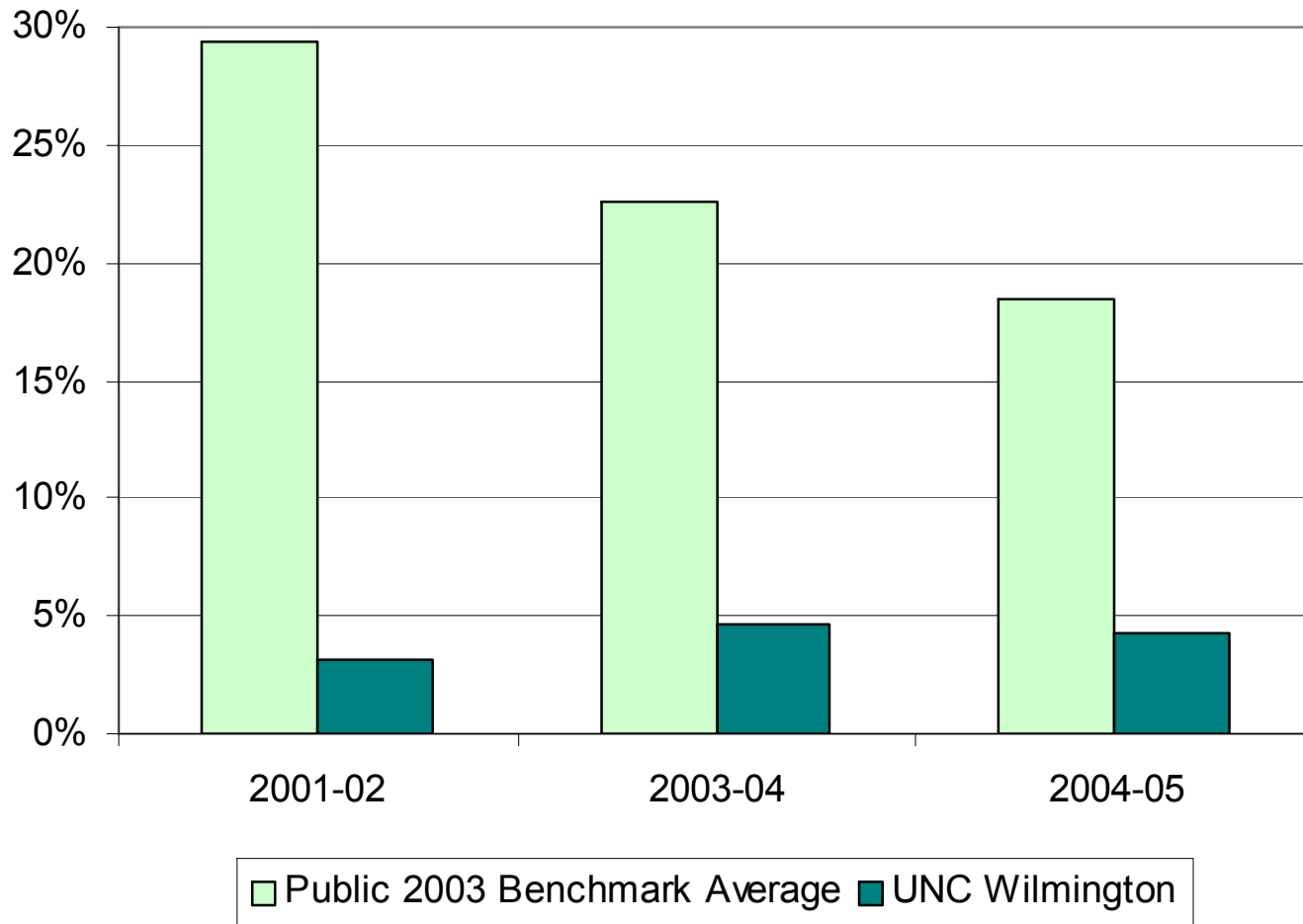
Trend Comparison: Average Freshman Merit Award

Data from US News & World Report – Benchmark 2003 institutions



Trend Comparison: Percent Receiving Freshman Merit Award

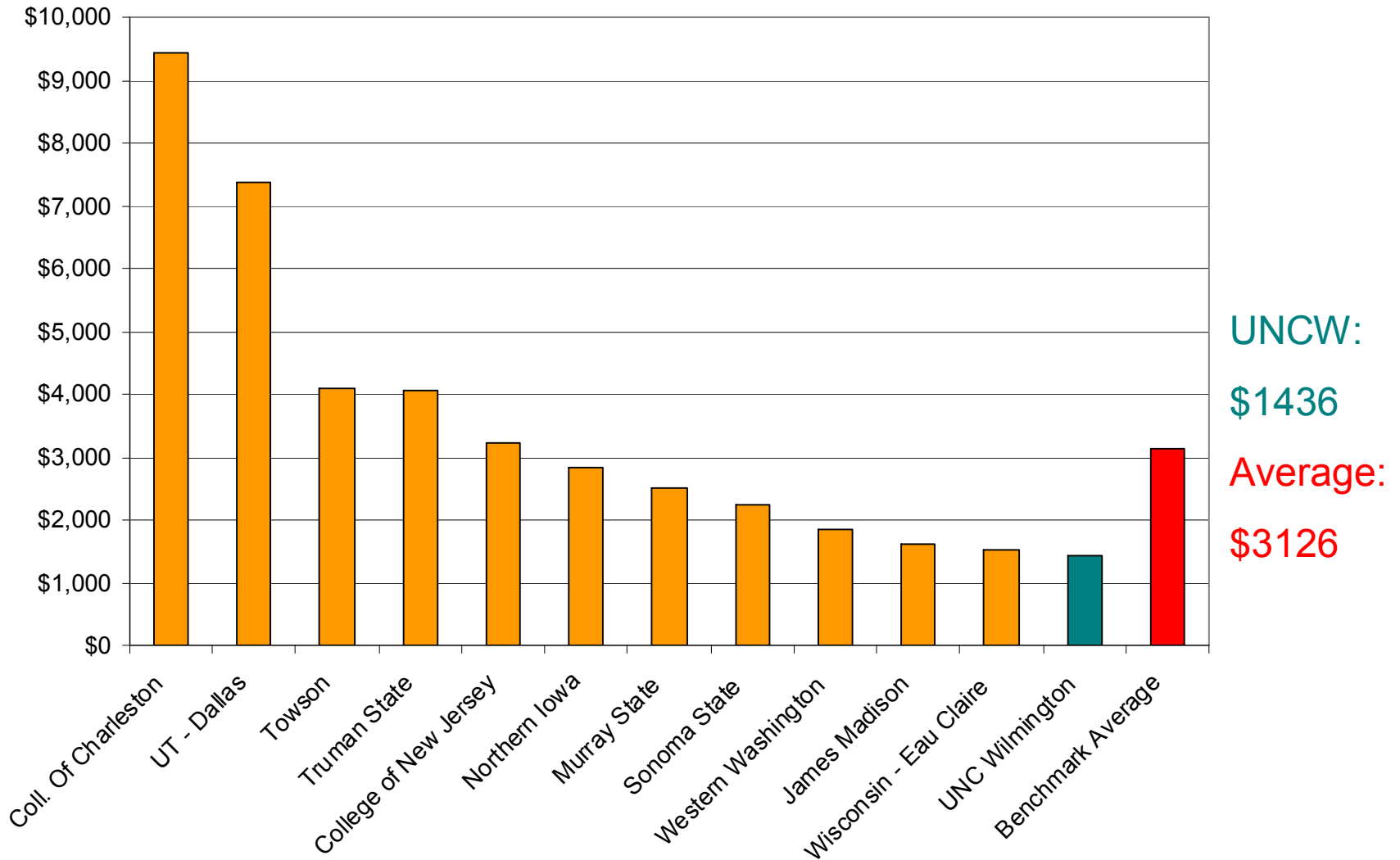
Data from US News & World Report – Benchmark 2003 institutions



Benchmark Comparison: 2004-05 Average Freshman Merit Award

Data from US News and World Report

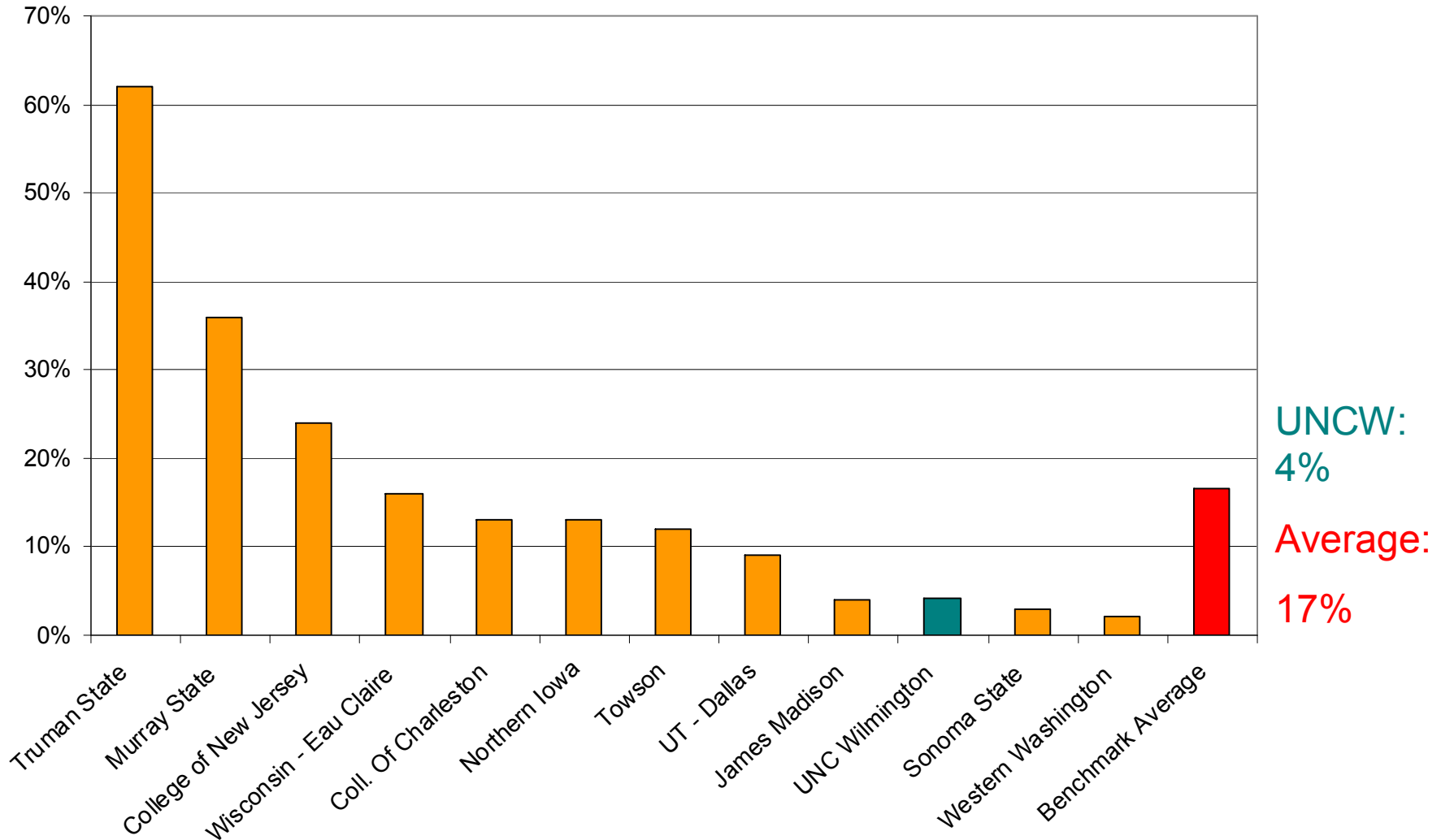
Excluded (incomplete data): Cal Polv. Humboldt State. Rowan



Benchmark Comparison: 2004-05 Percent Receiving Freshman Merit Award

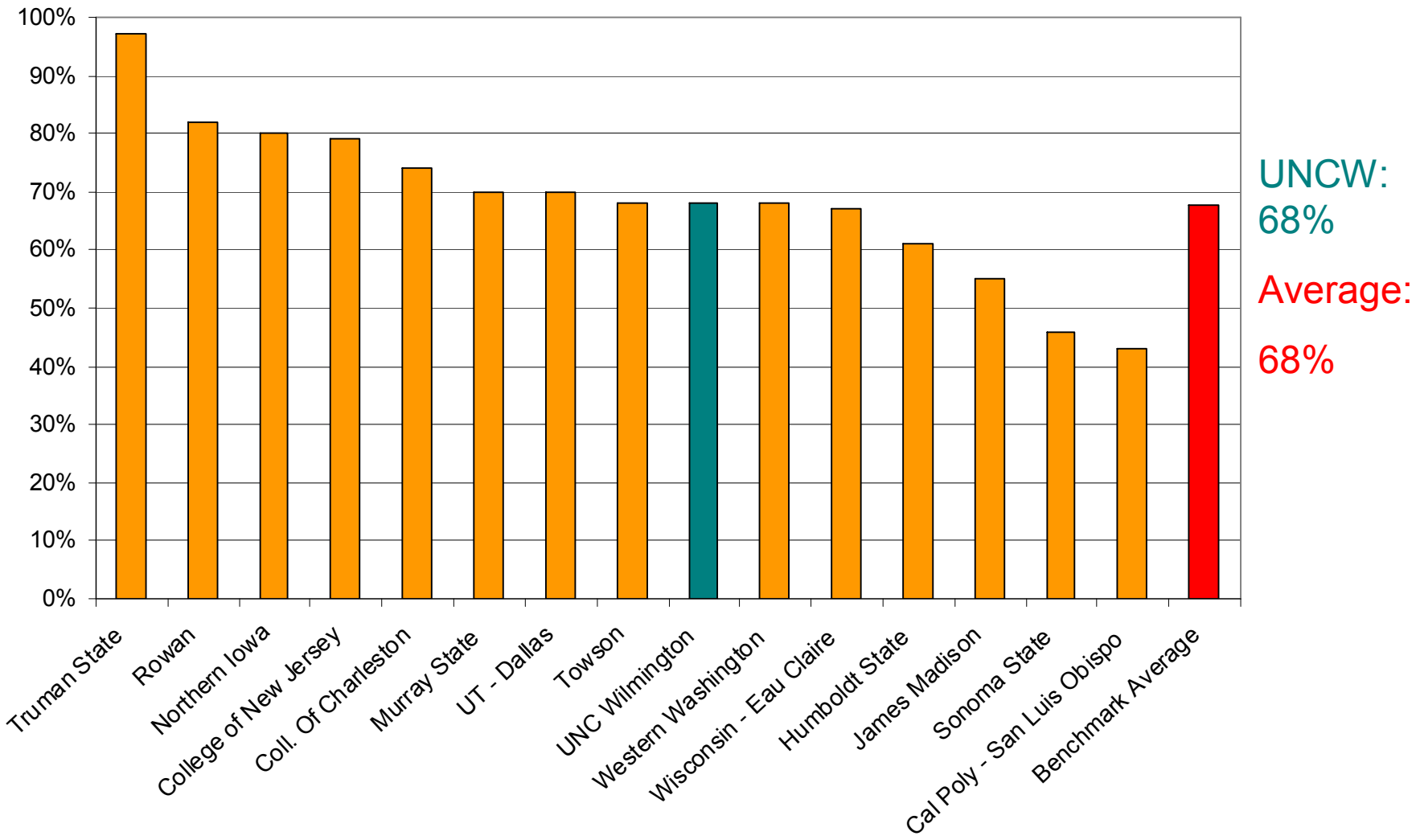
Data from US News and World Report

Excluded (incomplete data): Cal Poly, Humboldt State, Rowan



Benchmark Comparison: 2003-04 Percent Freshmen (First-Time, First-Year) Receiving Any Financial Aid

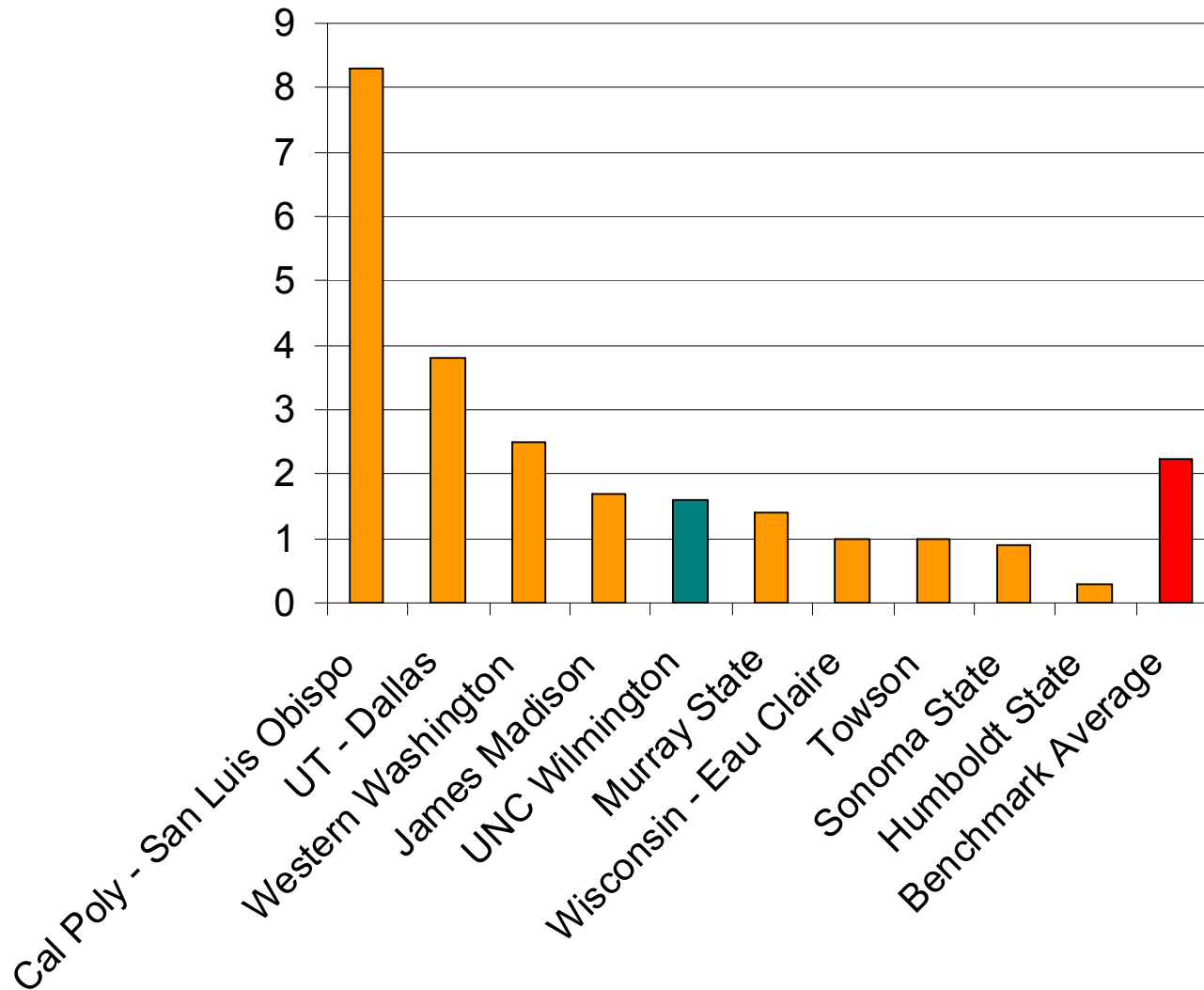
Data from IPEDS



2005 Corporate Giving Comparison

(Data from CAE. Amounts in \$ millions.)

Excludes College of Charleston, Truman State, College of New Jersey, Rowan and Northern Iowa (incomplete data)

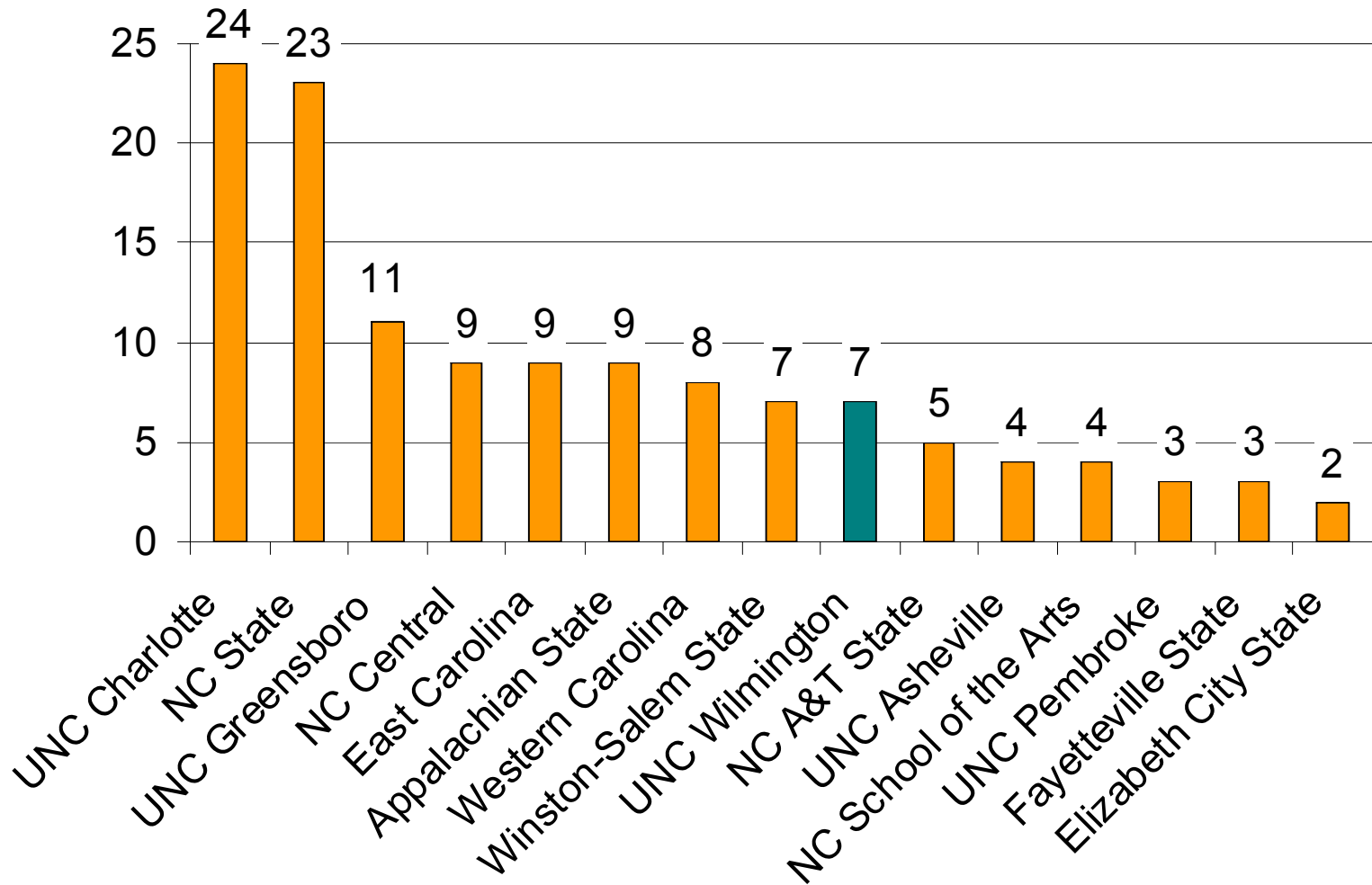


UNCW:
\$1.6M

Average:
\$2.3M

Number of Endowed Professorships

Distinguished Professors Endowment Trust Fund. 2003 data.
Excludes UNC Chapel Hill with 108 distinguished professorships.



Kiplinger's 100 Best Values in Public Colleges

- Based on data from more than 500 public four-year colleges and universities
- Narrowed to 130 schools based on **academic quality**
- Ranked top 100 based on **student costs and financial aid**
- 2006 rankings announced January 9

Kiplinger's 100 Best Values in Public Colleges

1 – UNC Chapel Hill

17 – James Madison

19 – College of New Jersey

23 – Truman State

28 – NC State University

32 – UNC Wilmington

33 – Appalachian State

45 – Cal Poly - San Luis Obispo

50 – UNC Asheville

54 – Murray State

56 – College of Charleston

66 – UT - Dallas

69 – Wisconsin - Eau Claire

75 – UNC Greensboro

97 Northern Iowa

99 – Rowan University