

University of North Carolina Wilmington



Six Years of Progress

2003 – 2009

www.uncw.edu/planning/peers.htm

UNCW Identity Statement

At UNCW, passionate and engaged teaching, learning and research matter. UNCW is unique in its dedication to combining a small college commitment to excellence in teaching with a research university's opportunities for student involvement in significant faculty scholarship.



| | | | |
|-----------------------------------|---|--|-----------------------------|
| UNC Wilmington | Florida State Univ. | Univ. of Minnesota-Twin Cities | Clemson University |
| Auburn University | University of Florida | Univ. of Missouri-Columbia | USC-Columbia |
| California-Berkeley | Georgia Tech | Univ. of Nebraska-Lincoln | Texas A & M University |
| California-Davis | University of Georgia | Univ. of New Hampshire | Univ. of Texas-Austin |
| California-Irvine | University of Illinois Urbana-Champaign | University at Buffalo | Univ. of Vermont |
| UCLA | Indiana University-Bloomington | Rutgers University-New Brunswick | College of William and Mary |
| California-Riverside | Purdue University | SUNY at Albany | Virginia Tech |
| California-San Diego | Iowa State University | SUNY College of Environmental Science and Forestry | University of Virginia |
| California-Santa Barbara | University of Iowa | US Military Academy- West Point | Washington St. Univ. |
| California-Santa Cruz | Univ. of Maryland-College Park | UNC Chapel Hill | Univ. of Washington |
| University of Colorado at Boulder | U Mass Amherst | NC State Univ. | Univ. of Wisconsin-Madison |
| Colorado School of Mines | Univ. of Michigan-Ann Arbor | Ohio State Univ. | Univ. of Central Florida |
| Colorado State Univ. | Michigan State Univ. | Ohio University | Univ. of Oklahoma |
| Univ. of Connecticut | Michigan Tech | University of Oregon | Oregon State Univ. |

| | | | |
|-----------------------------------|---|--|-----------------------------|
| UNC Wilmington | Florida State Univ. | Univ. of Minnesota-Twin Cities | Clemson University |
| Auburn University | University of Florida | Univ. of Missouri-Columbia | USC-Columbia |
| California-Berkeley | Georgia Tech | Univ. of Nebraska-Lincoln | Texas A & M University |
| California-Davis | University of Georgia | Univ. of New Hampshire | Univ. of Texas-Austin |
| California-Irvine | University of Illinois Urbana-Champaign | University at Buffalo | Univ. of Vermont |
| UCLA | Indiana University-Bloomington | Rutgers University-New Brunswick | College of William and Mary |
| California-Riverside | Purdue University | SUNY at Albany | Virginia Tech |
| California-San Diego | Iowa State University | SUNY College of Environmental Science and Forestry | University of Virginia |
| California-Santa Barbara | University of Iowa | US Military Academy- West Point | Washington St. Univ. |
| California-Santa Cruz | Univ. of Maryland-College Park | UNC Chapel Hill | Univ. of Washington |
| University of Colorado at Boulder | U Mass Amherst | NC State Univ. | Univ. of Wisconsin-Madison |
| Colorado School of Mines | Univ. of Michigan-Ann Arbor | Ohio State Univ. | Univ. of Central Florida |
| Colorado State Univ. | Michigan State Univ. | Ohio University | Univ. of Oklahoma |
| Univ. of Connecticut | Michigan Tech | University of Oregon | Oregon State Univ. |

| | | | |
|-----------------------------------|---|----------------------------------|-----------------------------|
| UNC Wilmington | Florida State Univ. | Univ. of Minnesota-Twin Cities | Clemson University |
| Auburn University | University of Florida | Univ. of Missouri-Columbia | USC-Columbia |
| California-Berkeley | Georgia Tech | Univ. of Nebraska-Lincoln | Texas A & M University |
| California-Davis | University of Georgia | Univ. of New Hampshire | Univ. of Texas-Austin |
| California-Irvine | University of Illinois Urbana-Champaign | University at Buffalo | Univ. of Vermont |
| UCLA | Indiana University-Bloomington | Rutgers University-New Brunswick | College of William and Mary |
| California-Riverside | Purdue University | SUNY at Albany | Virginia Tech |
| California-San Diego | Iowa State University | | University of Virginia |
| California-Santa Barbara | University of Iowa | | Washington St. Univ. |
| California-Santa Cruz | Univ. of Maryland-College Park | UNC Chapel Hill | Univ. of Washington |
| University of Colorado at Boulder | U Mass Amherst | NC State Univ. | Univ. of Wisconsin-Madison |
| | Univ. of Michigan-Ann Arbor | Ohio State Univ. | Univ. of Central Florida |
| Colorado State Univ. | Michigan State Univ. | Ohio University | Univ. of Oklahoma |
| Univ. of Connecticut | | University of Oregon | Oregon State Univ. |

| | | | |
|-----------------------------------|---|----------------------------------|-----------------------------|
| UNC Wilmington | Florida State Univ. | Univ. of Minnesota-Twin Cities | Clemson University |
| Auburn University | University of Florida | Univ. of Missouri-Columbia | USC-Columbia |
| California-Berkeley | Georgia Tech | Univ. of Nebraska-Lincoln | Texas A & M University |
| California-Davis | University of Georgia | Univ. of New Hampshire | Univ. of Texas-Austin |
| California-Irvine | University of Illinois Urbana-Champaign | University at Buffalo | Univ. of Vermont |
| UCLA | Indiana University-Bloomington | Rutgers University-New Brunswick | College of William and Mary |
| California-Riverside | Purdue University | SUNY at Albany | Virginia Tech |
| California-San Diego | Iowa State University | | University of Virginia |
| California-Santa Barbara | University of Iowa | | Washington St. Univ. |
| California-Santa Cruz | Univ. of Maryland-College Park | UNC Chapel Hill | Univ. of Washington |
| University of Colorado at Boulder | U Mass Amherst | NC State Univ. | Univ. of Wisconsin-Madison |
| | Univ. of Michigan-Ann Arbor | Ohio State Univ. | Univ. of Central Florida |
| Colorado State Univ. | Michigan State Univ. | Ohio University | Univ. of Oklahoma |
| Univ. of Connecticut | | University of Oregon | Oregon State Univ. |

| | | | |
|----------------|--|--|-----------------------------|
| UNC Wilmington | | | |
| | | | |
| | | | |
| | <p>Just <u>two</u> public US institutions with:</p> <ul style="list-style-type: none">• 6-year graduation rate at least 62%• Research expenditures at least 8% of total• Total enrollment at least 7500• Total revenues less than \$400 million | | |
| | | | College of William and Mary |
| | | | |
| | | | |
| | | | |
| | | | |
| | | | |
| | | | |
| | | | |
| | | | |
| | | | |

University of North Carolina Wilmington



Six Years of Progress

2003 – 2009

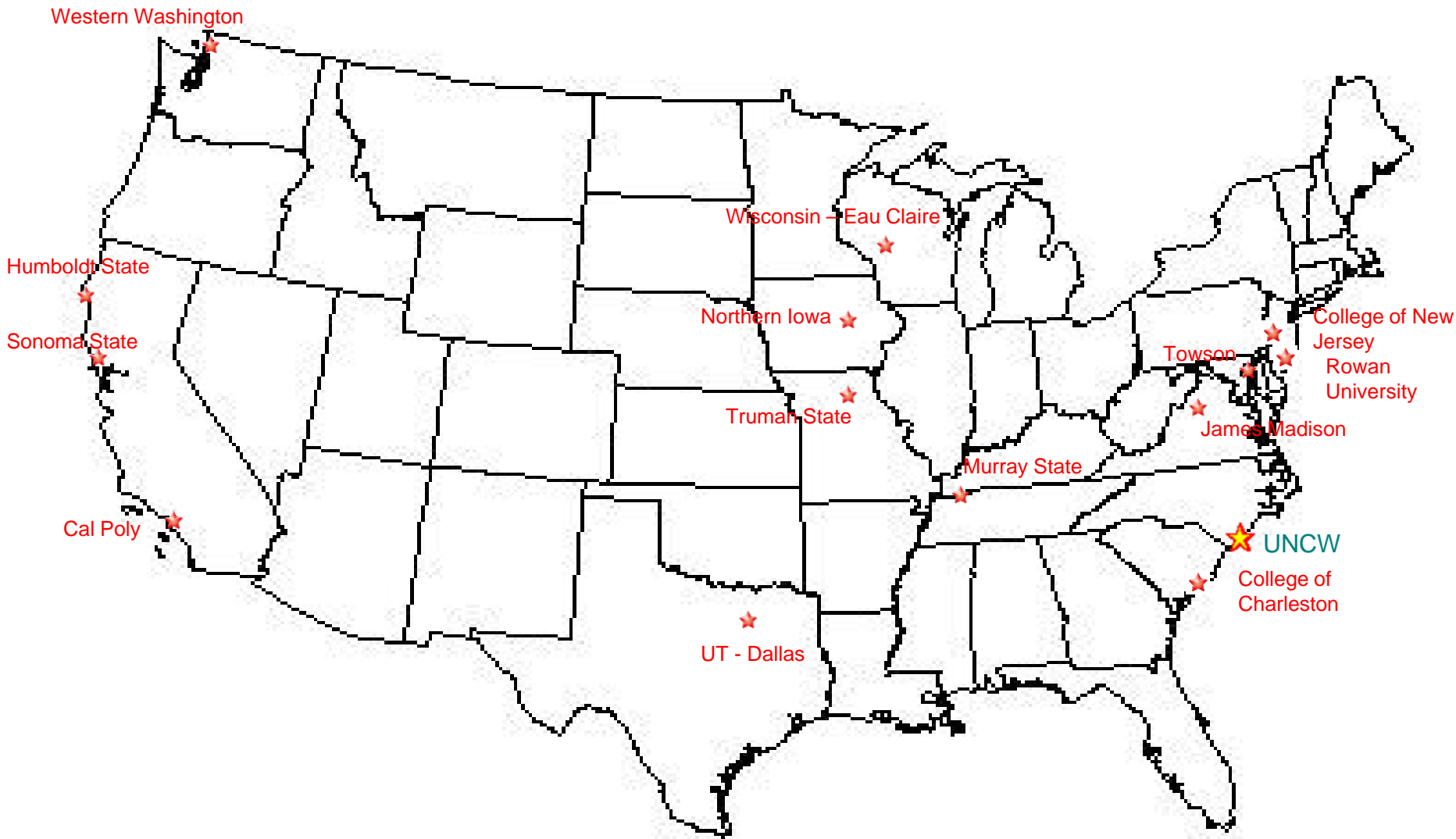
www.uncw.edu/planning/peers.htm

Peer Institutions

Approved by the UNC Board of Governors February 2006

- Cal Poly – San Luis Obispo
- College Of Charleston
- College of New Jersey
- Humboldt State
- James Madison
- Murray State
- Northern Iowa
- Rowan
- Sonoma State
- Towson
- Truman State
- UT – Dallas
- Wisconsin – Eau Claire
- Western Washington

Geographic location of UNCW's peers



The Top Public Universities—Master's

| NORTH | SOUTH | MIDWEST | WEST |
|--|---|--|---|
| <ul style="list-style-type: none"> 1. College of New Jersey 2. SUNY Col. Arts & Sci.—Geneseo 3. Rowan University (NJ) 4. Rutgers, the St. Univ. of NJ—Camden 5. Ramapo Col. of New Jersey 6. CUNY—Baruch College 7. Salisbury University (MD) 8. Towson University (MD) 8. SUNY Col. Arts & Sci.—New Paltz 10. SUNY College—Oneonta 10. CUNY—Hunter College 10. CUNY—Queens College 10. Richard Stockton Col. of NJ 14. SUNY—Fredonia 15. Millersville Univ. of Pa. | <ul style="list-style-type: none"> 1. James Madison University (VA) 2. The Citadel (SC) 3. Appalachian State Univ. (NC) 4. College of Charleston (SC) 5. Univ. of Mary Washington (VA) 6. U. of N.C.—Wilmington 7. Murray State University (KY) 8. Longwood University (VA) 9. Winthrop University (SC) 10. Western Carolina Univ. (NC) 11. Western Kentucky University 11. Georgia College and State University 13. Mississippi Univ. for Women 13. Tennessee Technological Univ. 15. Radford University (VA) | <ul style="list-style-type: none"> 1. Truman State University (MO) 2. University of Northern Iowa 3. Univ. of Wisconsin—La Crosse 4. Univ. of Illinois—Springfield 4. Univ. of Michigan—Dearborn 6. Univ. of Wisconsin—Eau Claire 7. Washburn University (KS) 7. Grand Valley State Univ. (MI) 7. University of Minnesota—Duluth 10. Missouri State Univ. 11. Southern Ill. U.—Edwardsville 11. Winona State University (MN) 11. Eastern Illinois University 14. U. of Wisconsin—Stevens Point 15. U. of Wisconsin—Whitewater 15. Western Illinois Univ. | <ul style="list-style-type: none"> 1. Cal Poly—San Luis Obispo 2. N.M. Inst. of Mining and Tech. 3. Western Washington University 4. California State U.—Long Beach 5. Evergreen State College (WA) 6. California State Univ.—Chico 6. U. of Colo.—Colorado Springs 8. Sonoma State University (CA) 8. California State U.—Fullerton 8. Calif. State Poly. U.—Pomona 11. Arizona St. Univ.—West 12. Humboldt State University (CA) 12. Texas State Univ.—San Marcos 12. San Jose State University (CA) 12. California State Univ.—Fresno |

Denotes UNCW peer

Rankings from US News and World Report's America's Best Colleges 2010

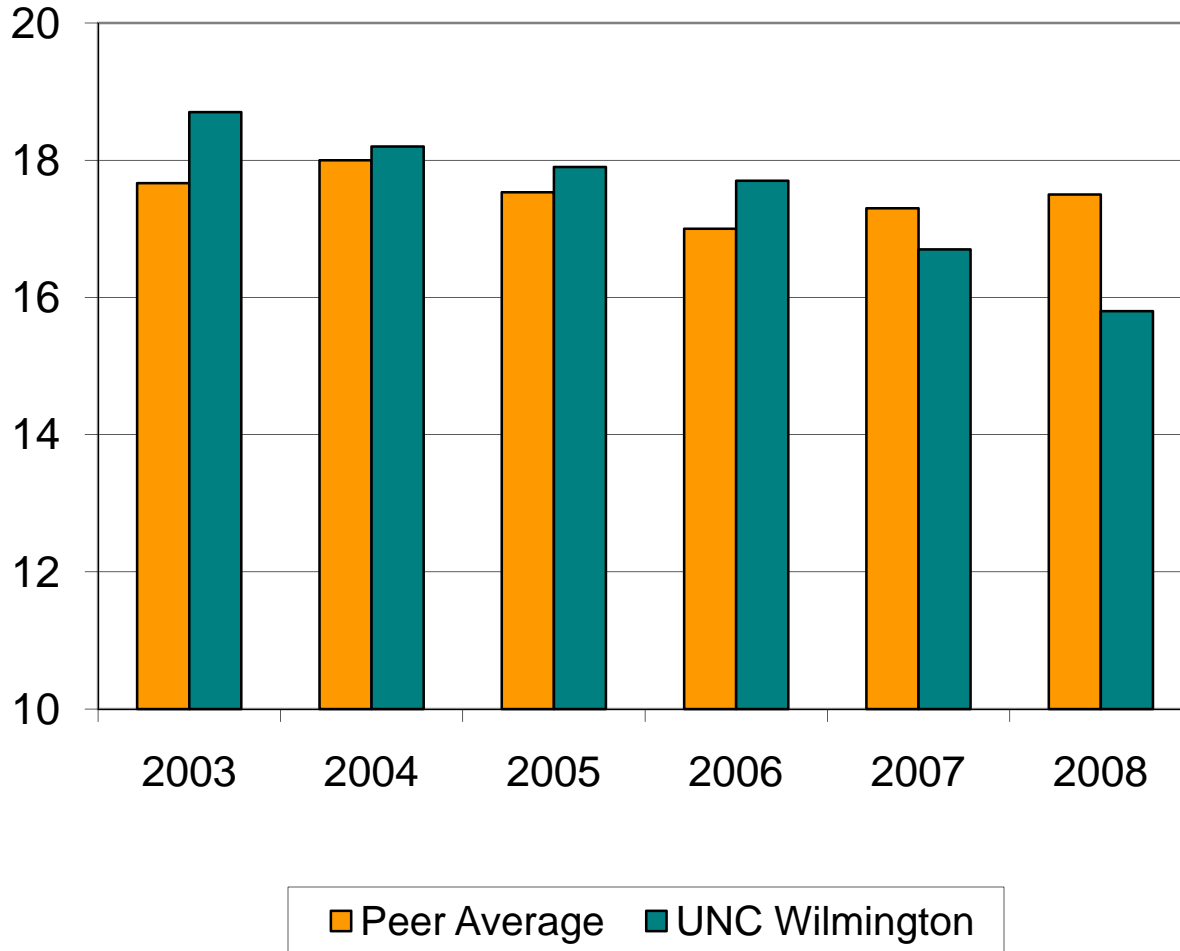
Progress Measure 1

**Improve the student-faculty ratio
to 15 to 1 by 2013.**



Student-Faculty Ratio Trend

(Data from US News and World Report)



Fall 2003
student-
faculty
ratio:
18.7 to 1

Fall 2008
student-
faculty
ratio:
15.8 to 1

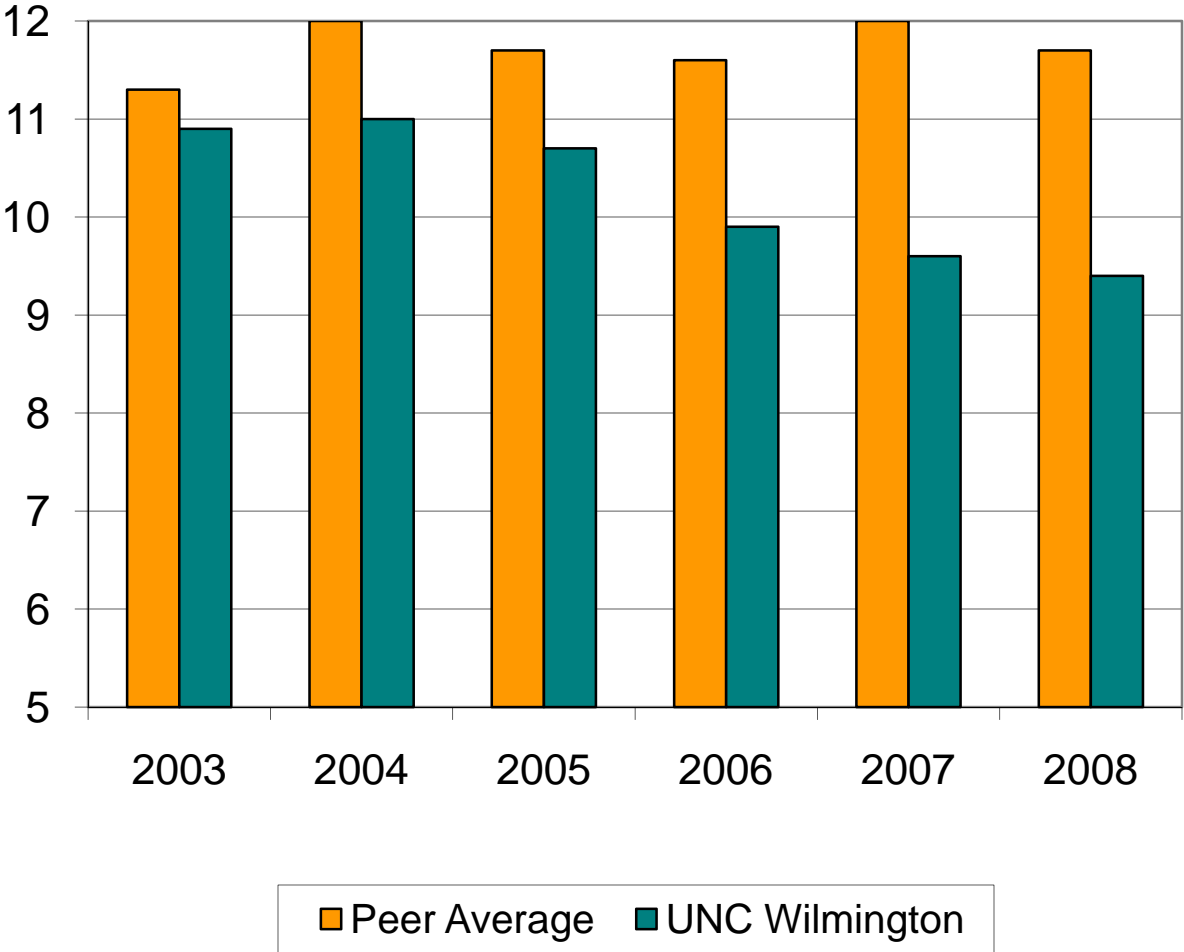
Progress Measure 2

Improve the student-staff ratio from 10.9 to 1 in 2003-04 to 10.0 to 1 by 2010.



Student-Staff Ratio Trend

(Data from IPEDS)



Fall 2003
student-
staff ratio:
10.9 to 1

Fall 2008
student-
staff ratio:
9.4 to 1

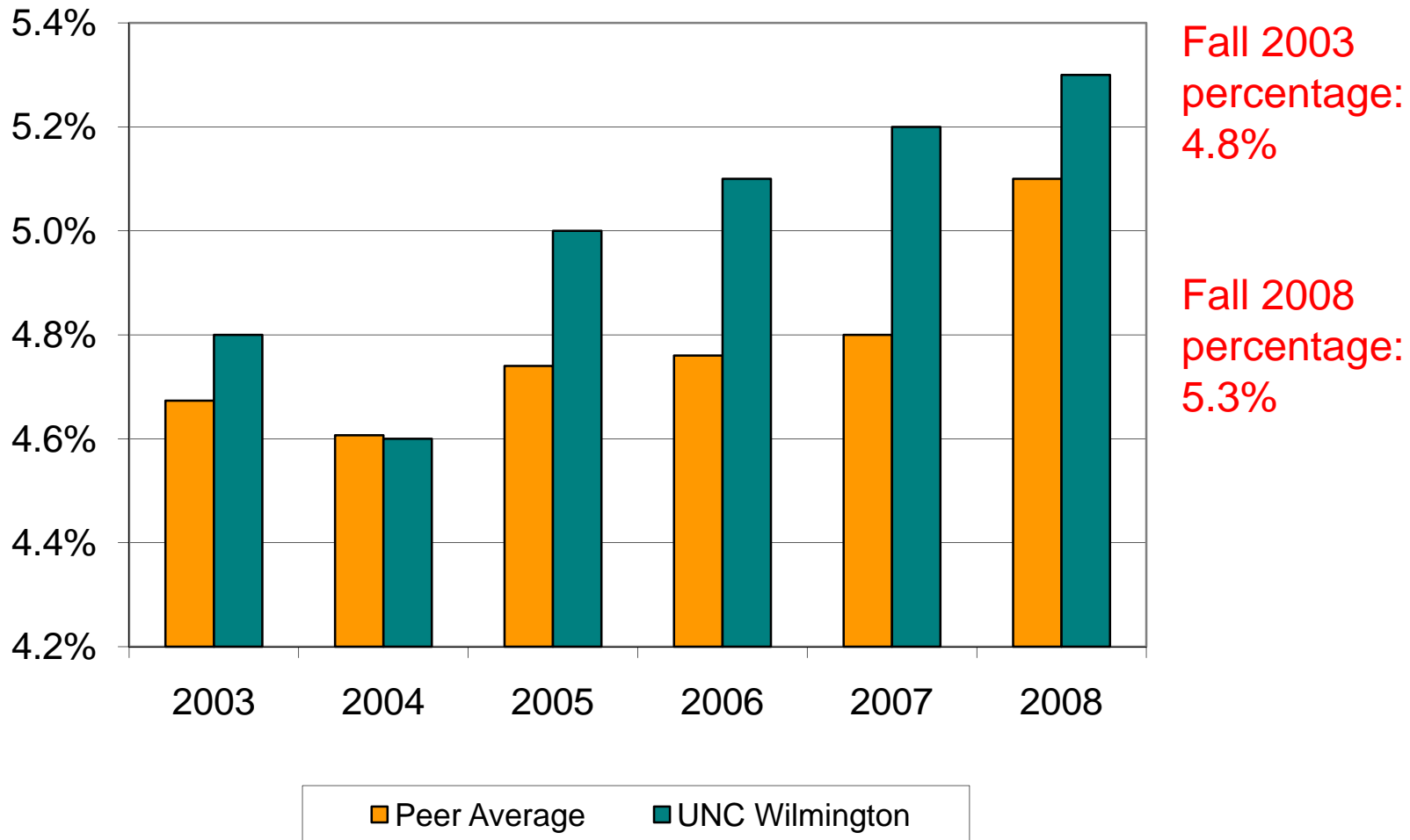
Progress Measure 3

...increase the proportion of student enrollments from historically underrepresented groups to achieve a critical mass necessary to enrich the education of all UNCW students.



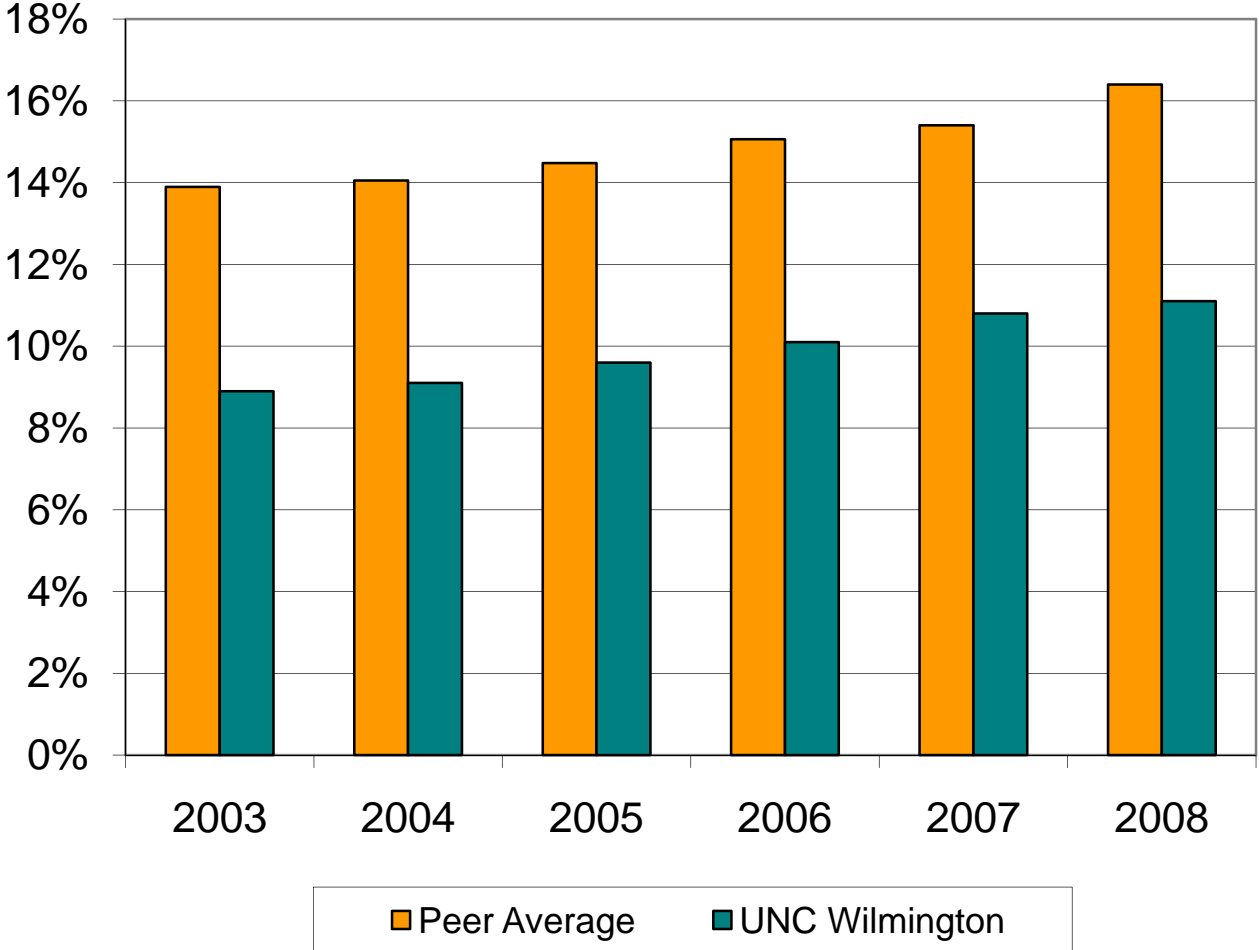
Black, Non-Hispanic Students as a Percentage of Total Enrolled

(Data from IPEDS)



Minority Students as a Percentage of Total Enrolled

(Data from IPEDS)



Fall 2003
percentage:
8.9%

Fall 2008
percentage:
11.1%

Progress Measure 4

Increase the freshman to sophomore retention rate from 85.7% in 2004-05 to 90% by 2011, the four-year graduation rate from 42.8% in 2004-05 to 50% by 2012, and the six-year graduation rate from 61% in 2004-05 to 70% by 2012 and to 75% by 2017.



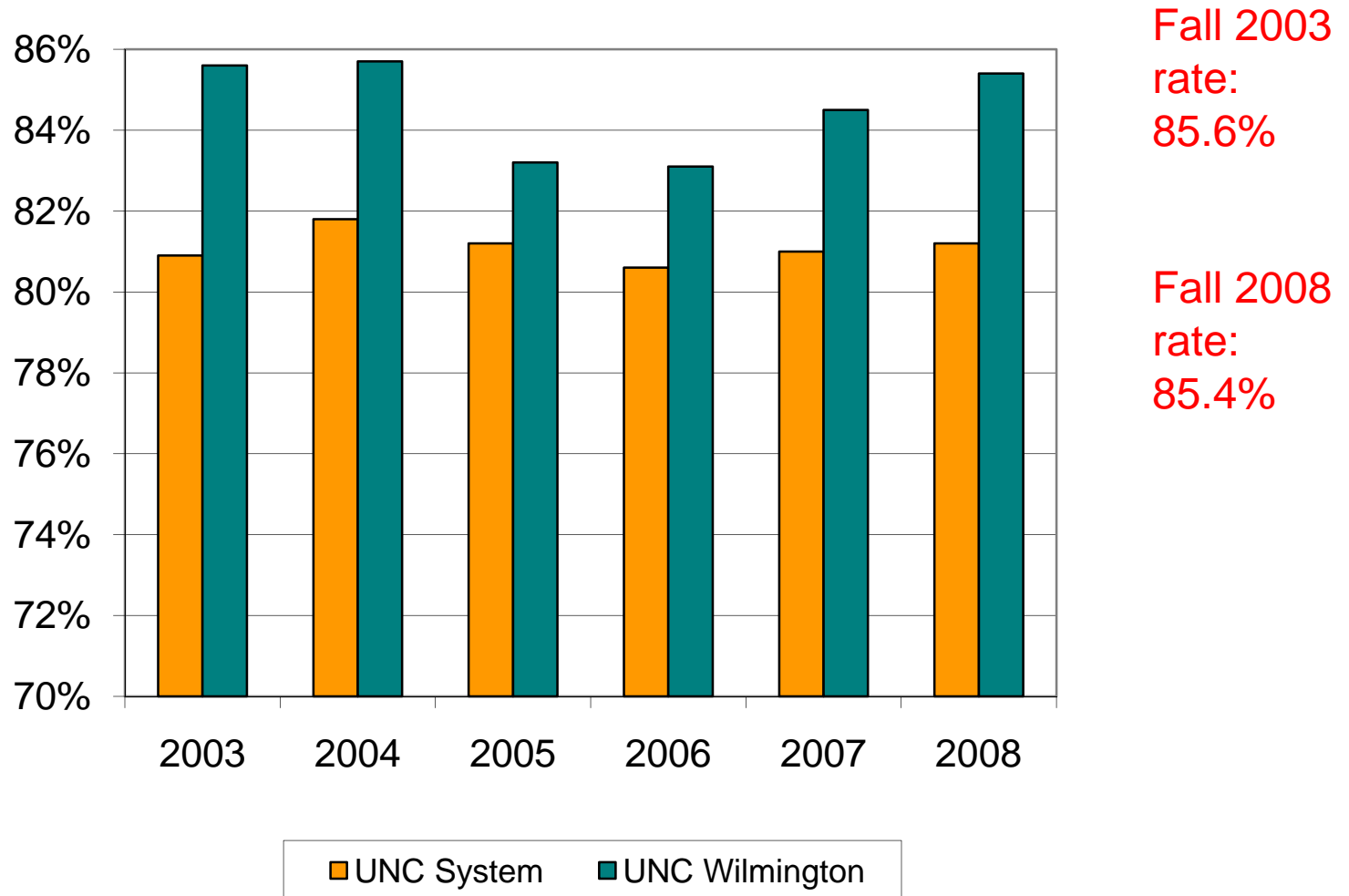
Progress Measure 4

Increase the freshman to sophomore retention rate from 85.7% in 2004-05 to 90% by 2011, the four-year graduation rate from 42.8% in 2004-05 to 50% by 2012, and the six-year graduation rate from 61% in 2004-05 to 70% by 2012 and to 75% by 2017.



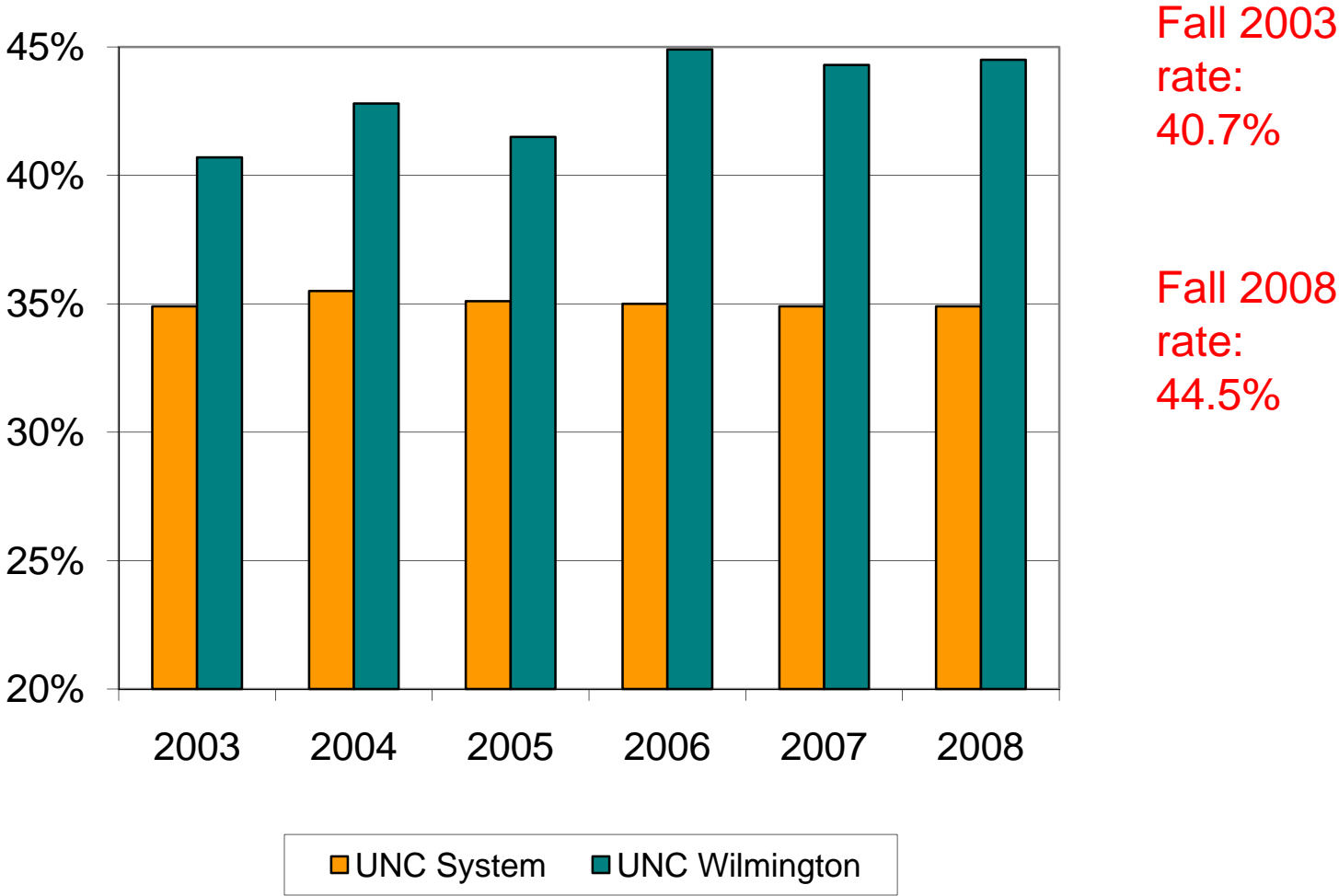
Freshman Retention Rate

(Data from UNC System Web site)



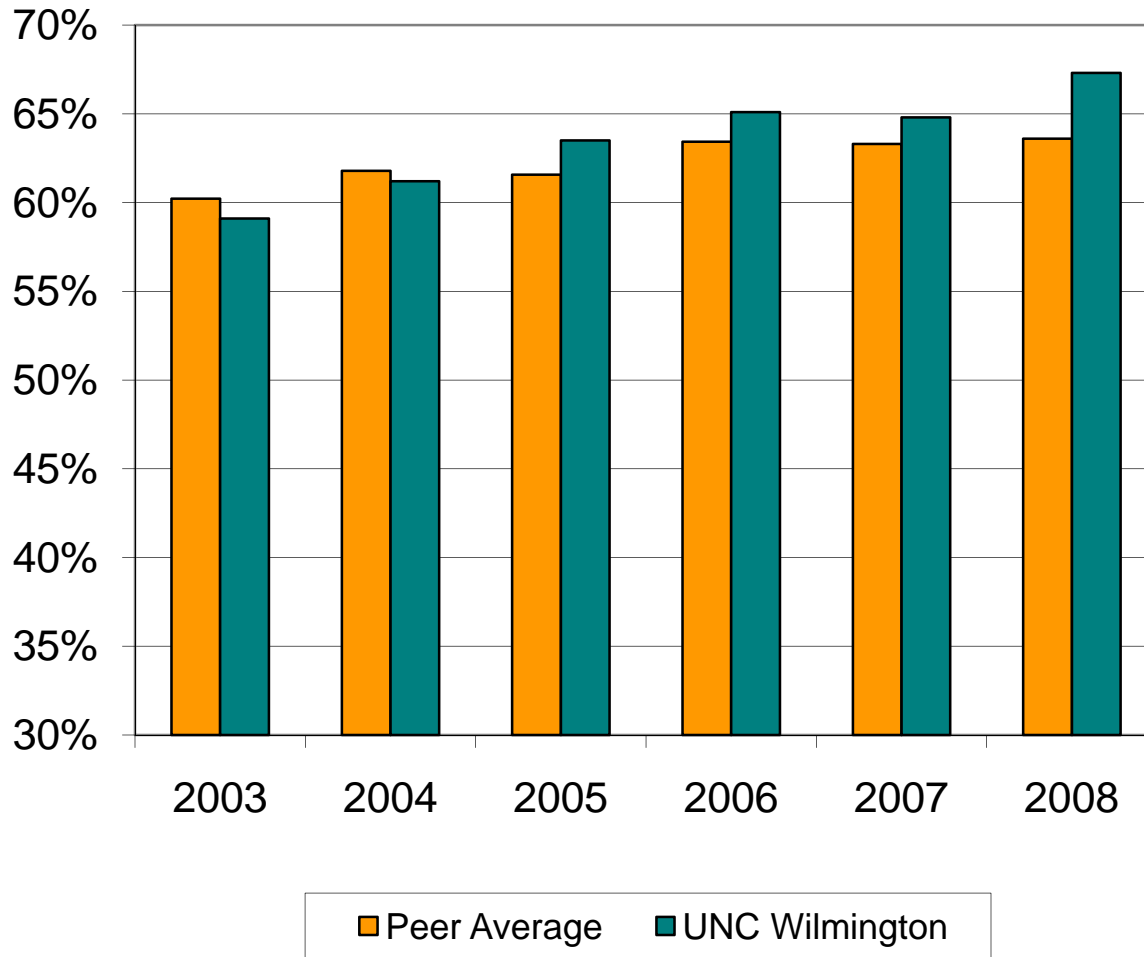
Four-Year Graduation Rate

(Data from UNC System Web site)



Six-Year Graduation Rate

(Data from IPEDS)



Fall 2003
rate:
59.1%

Fall 2008
rate:
67.3%

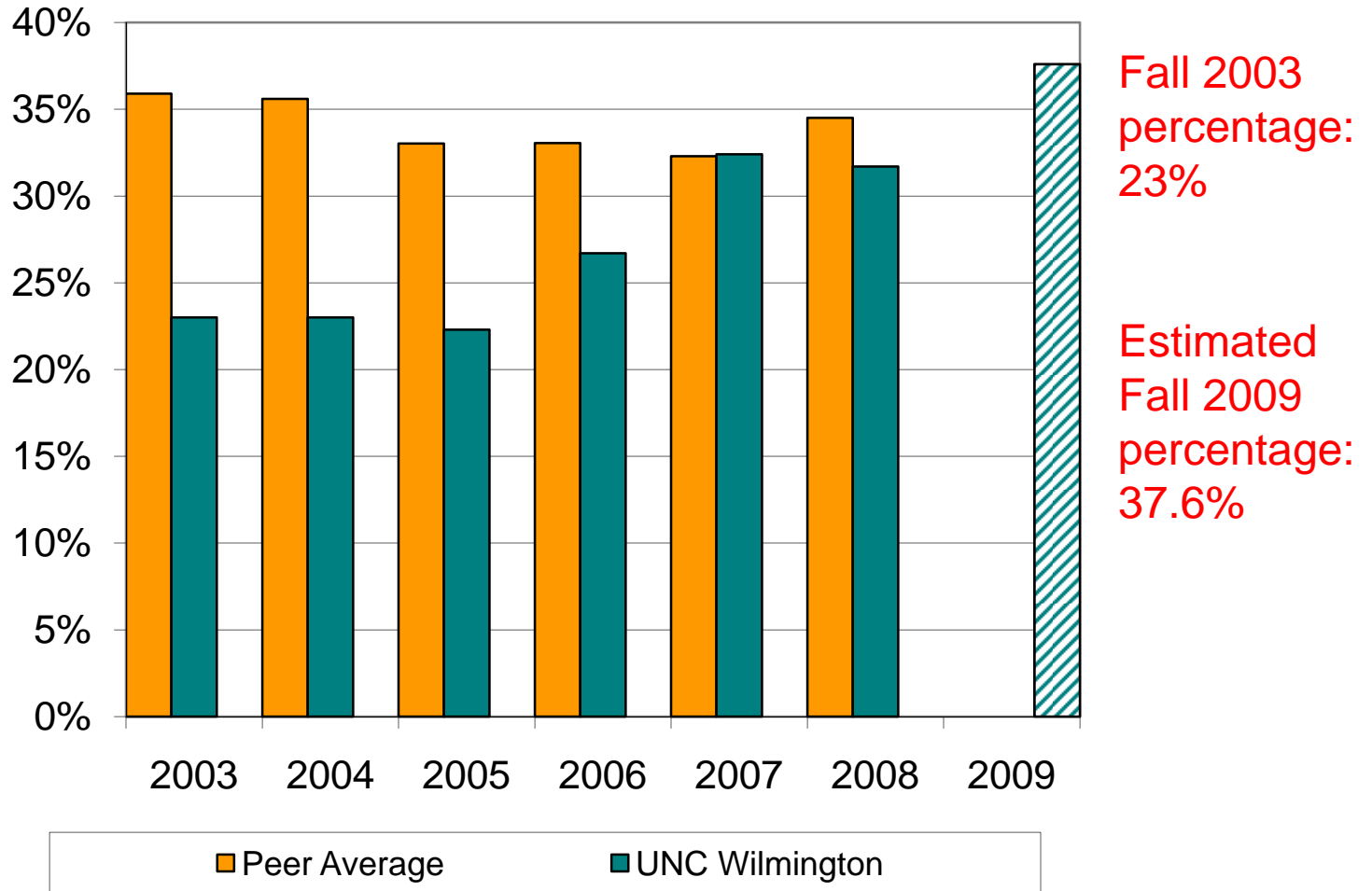
Progress Measure 5

Increase the percentage of undergraduates housed on campus from 23.1% in 2004-05 to 35% by 2009, with a long term target of 40%.



Percentage of Undergraduates Housed on Campus

(Data from US News and World Report)



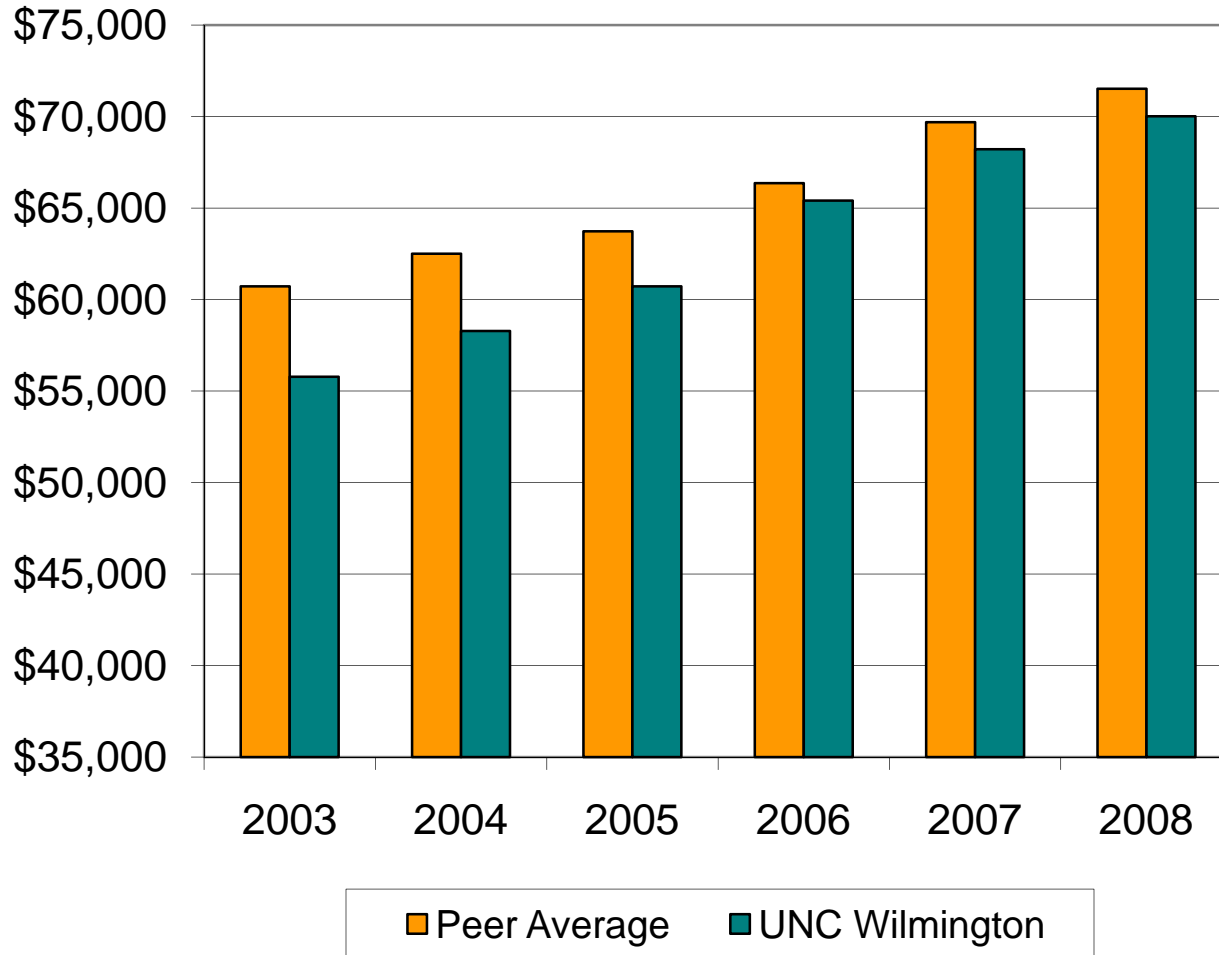
Progress Measure 6

...steadily increase average faculty salaries to the peer group 80th percentile for each rank...



Average Faculty Salary

(Average salary of full time instructional faculty on 9 or 10 month contracts.
Data from IPEDS)



Fall 2003
average:
\$ 55783

Fall 2008
average
\$ 70017

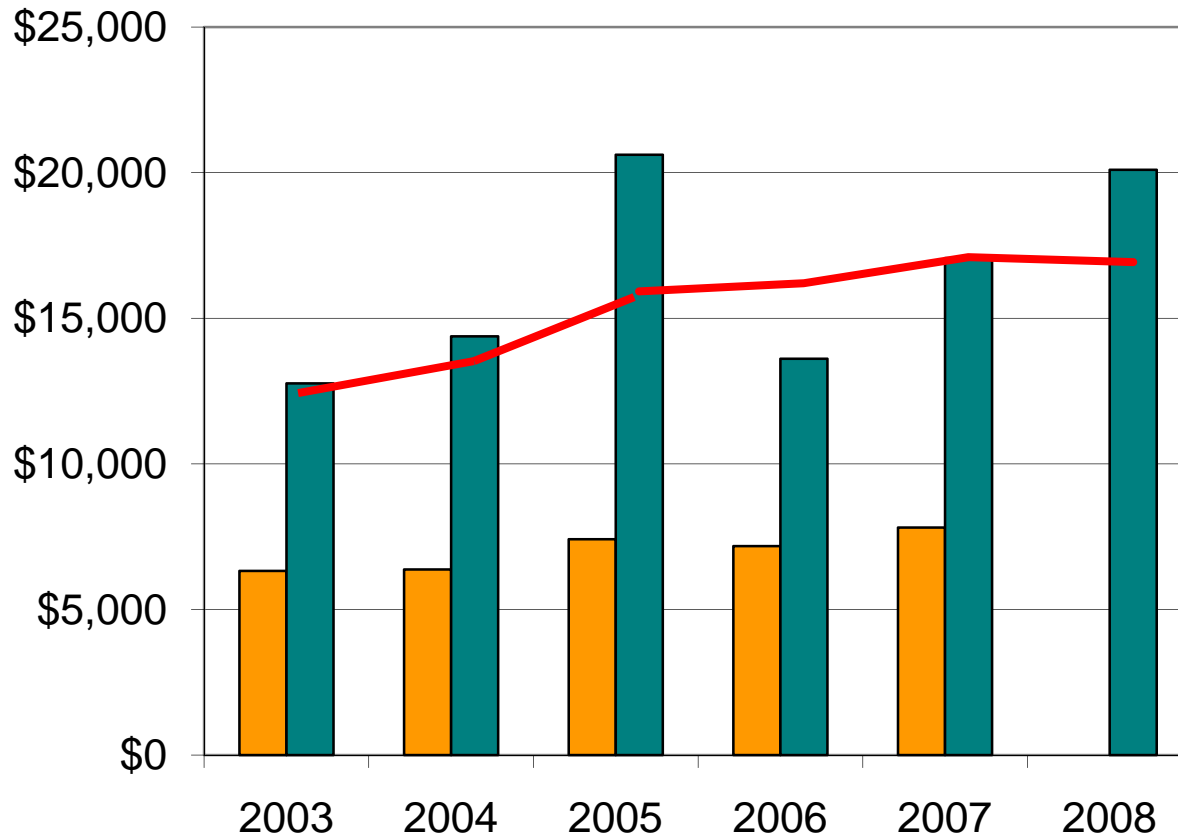
Progress Measure 7

Increase the three-year moving average of total annual R&D expenditures from \$12.5 million in 2001-03 to at least \$20 million by 2009-11.



Total R&D Expenditures

(Dollar amounts in thousands. FY data from NSF WebCASPAR)



FY 2003:
\$12.8
million

FY2008:
\$20.1
million

Peer Average UNC Wilmington 3-Year Moving Avg.

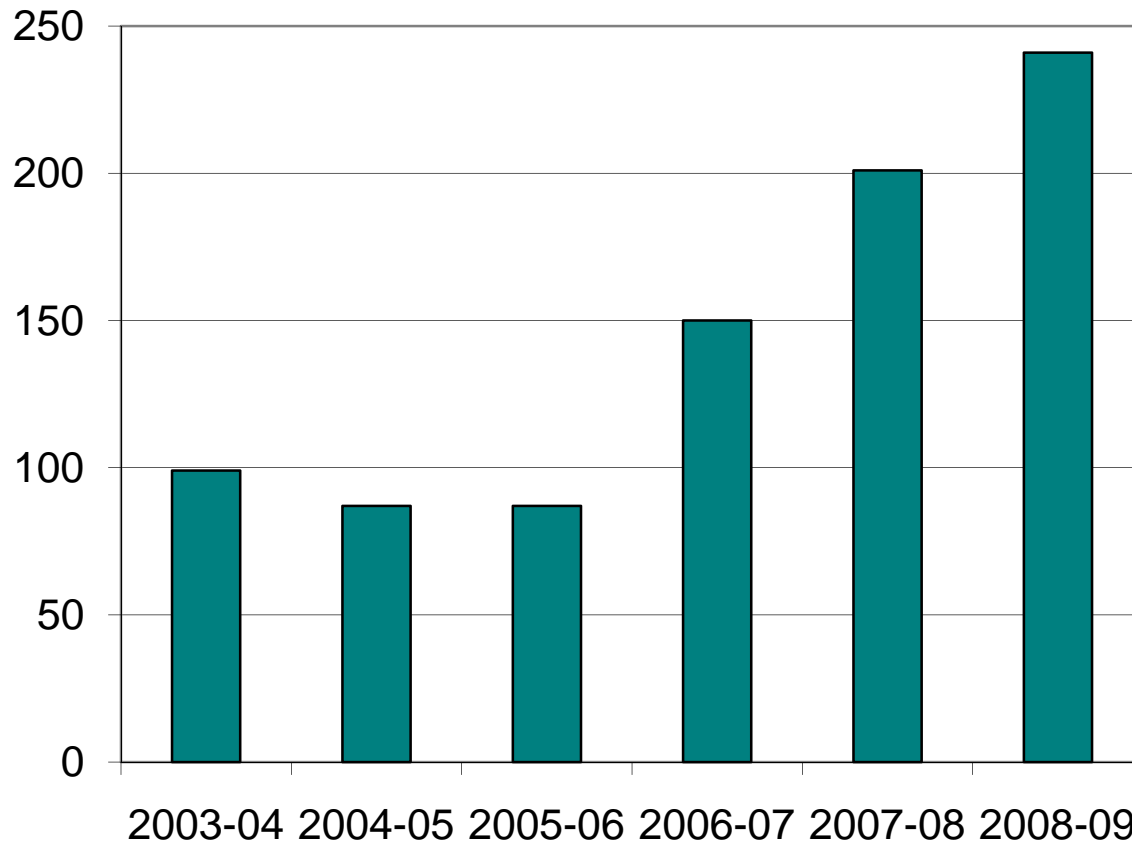
Progress Measure 8

By fall 2010, increase the international student population to 3% of the total student population. Increase the study abroad participation rate to 20% of undergraduates completing UNCW degrees by 2010, and to 25% by 2015.



International Student Enrollment

(Data from UNCW Office of International Programs)



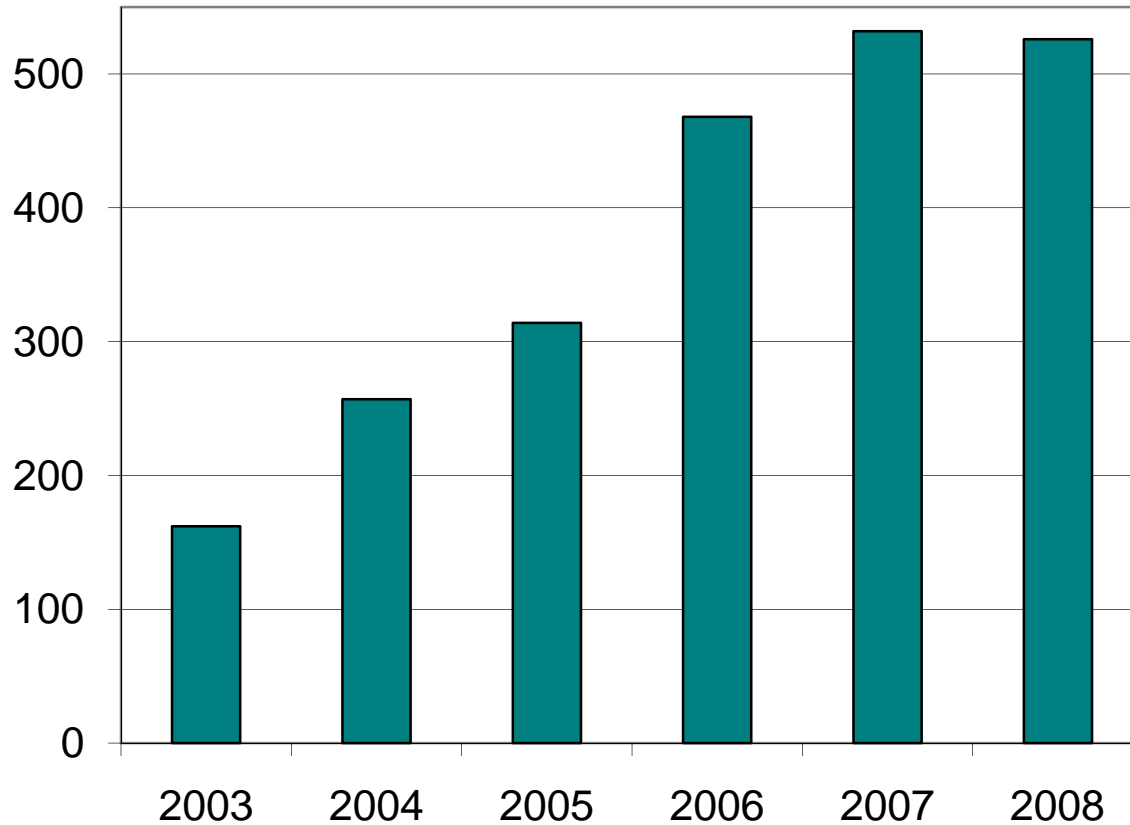
2003-04 intl.
enrollment:
99

2008-09 intl.
enrollment:
241

■ UNC Wilmington

Undergraduate Study Abroad Participation

(Data from UNCW Office of International Programs)



2003-04
participants:
162

2008-09
participants:
526

■ UNC Wilmington

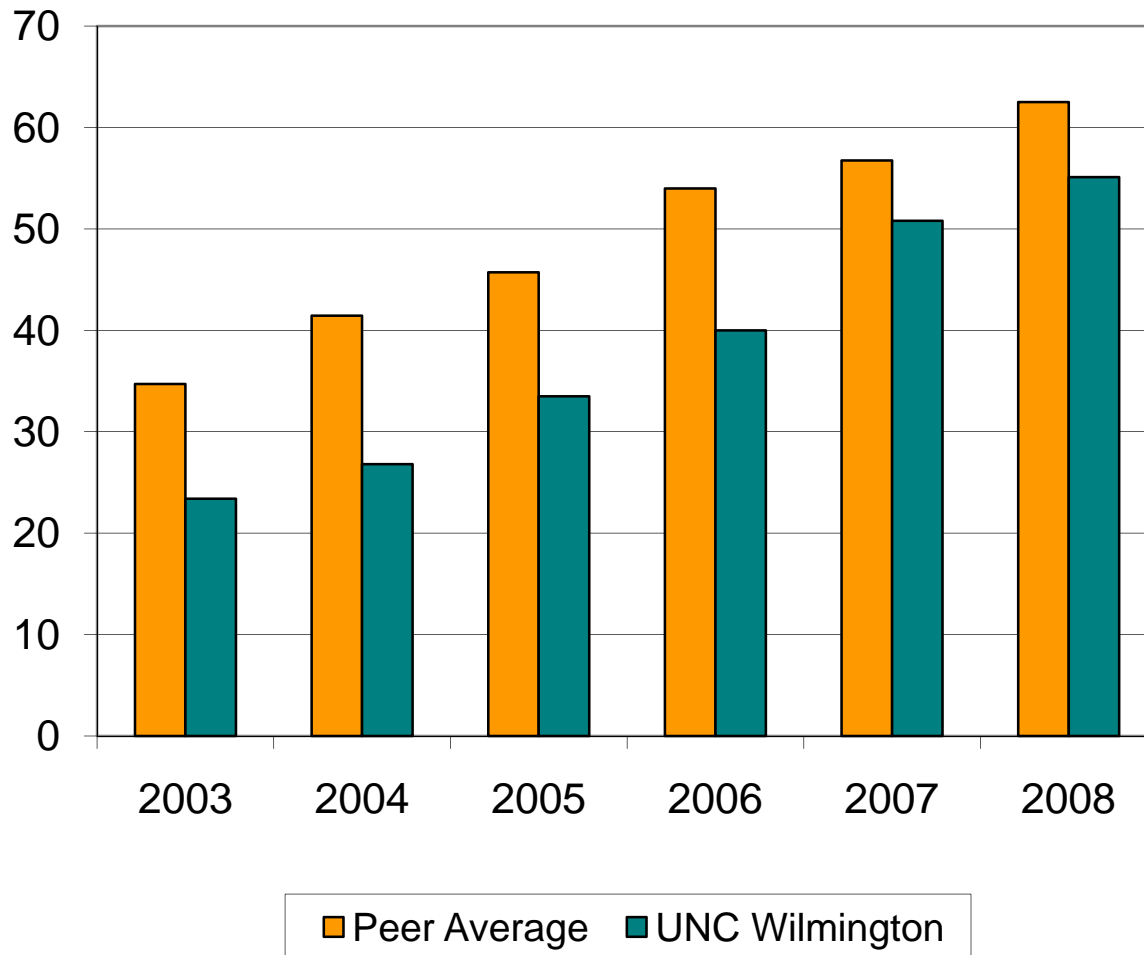
Progress Measure 9

Raise significant additional endowment for diversity and merit scholarships, with a campaign to be completed by 2013.



Endowment Value (\$ millions)

(End of Fiscal Year Market Value. Data from CAE)



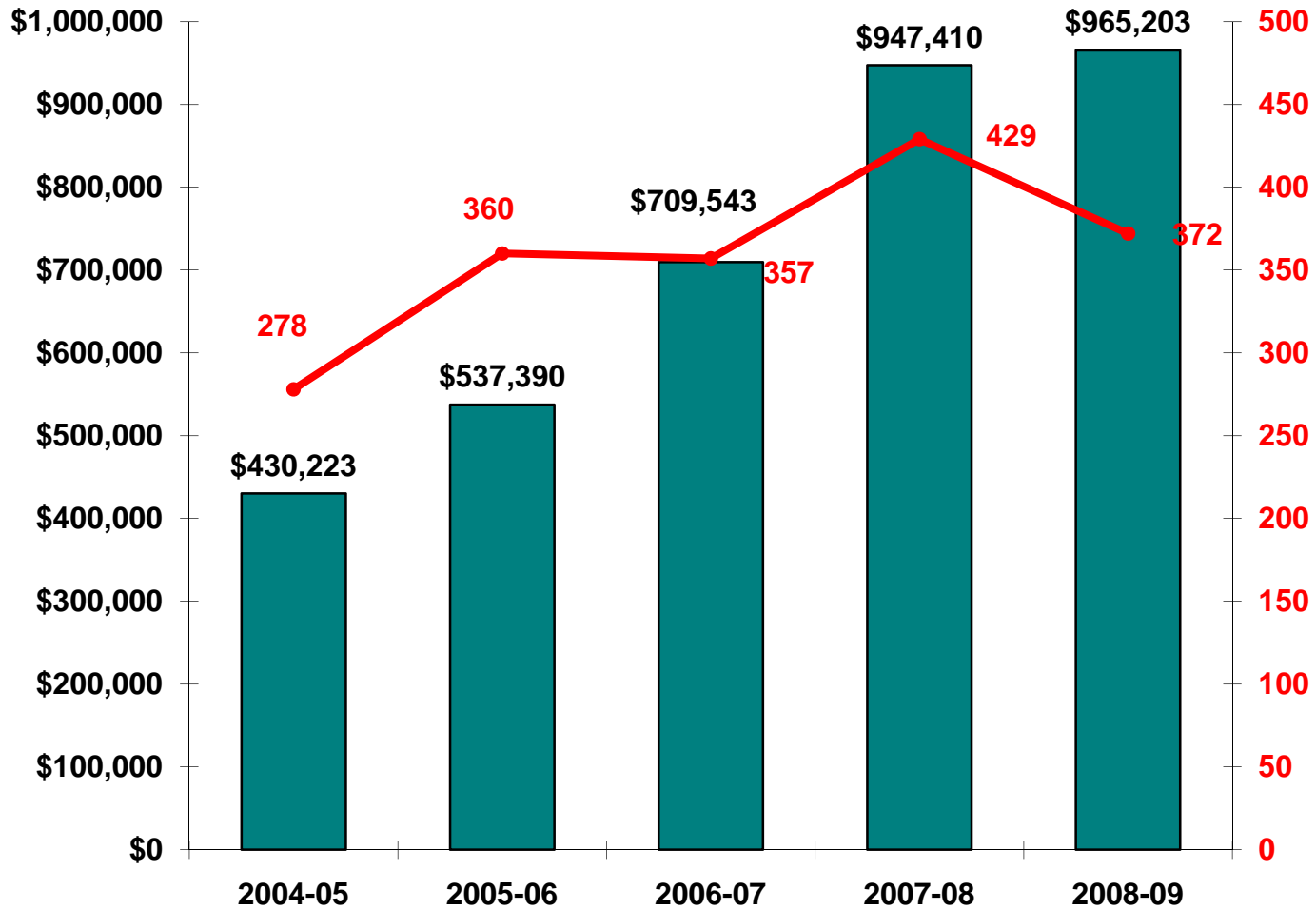
FY 2003
endowment:
\$23.4 million

FY 2008
endowment:
\$55.1 million

UNCW's
endowment
as of
12/31/08
was
\$47.1M

Total Non-Need Based (Merit) Aid Awarded to UNCW Undergraduates from Endowment Funds

(Excludes athletic awards. Data from UNCW Financial Aid Office)



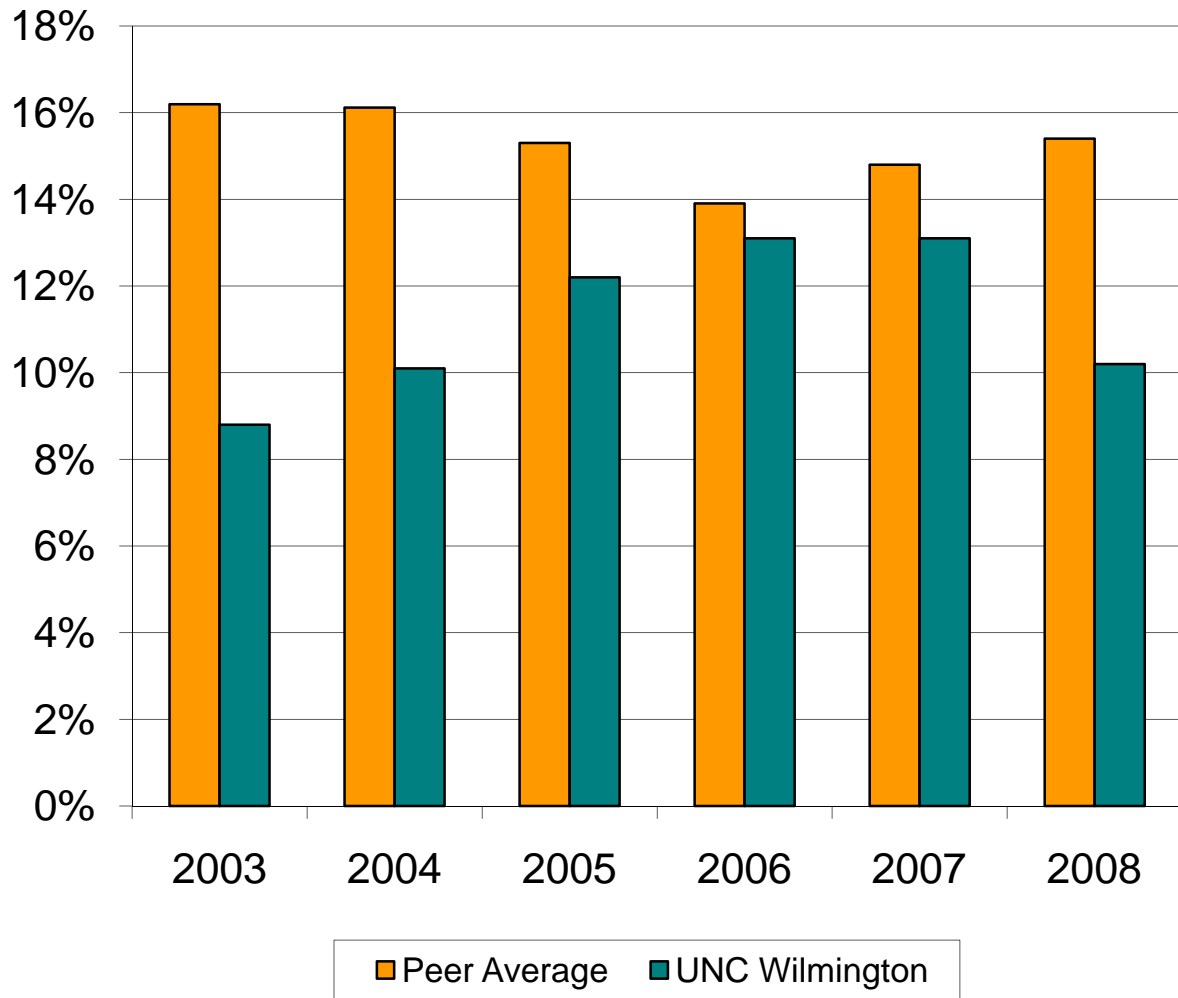
Progress Measure 10

By FY 2013, increase the alumni giving rate to 15% and raise the average alumni gift amount to the top quintile among our peers.



Alumni Giving (Donors as a % of Solicited)

(Data from CAE)

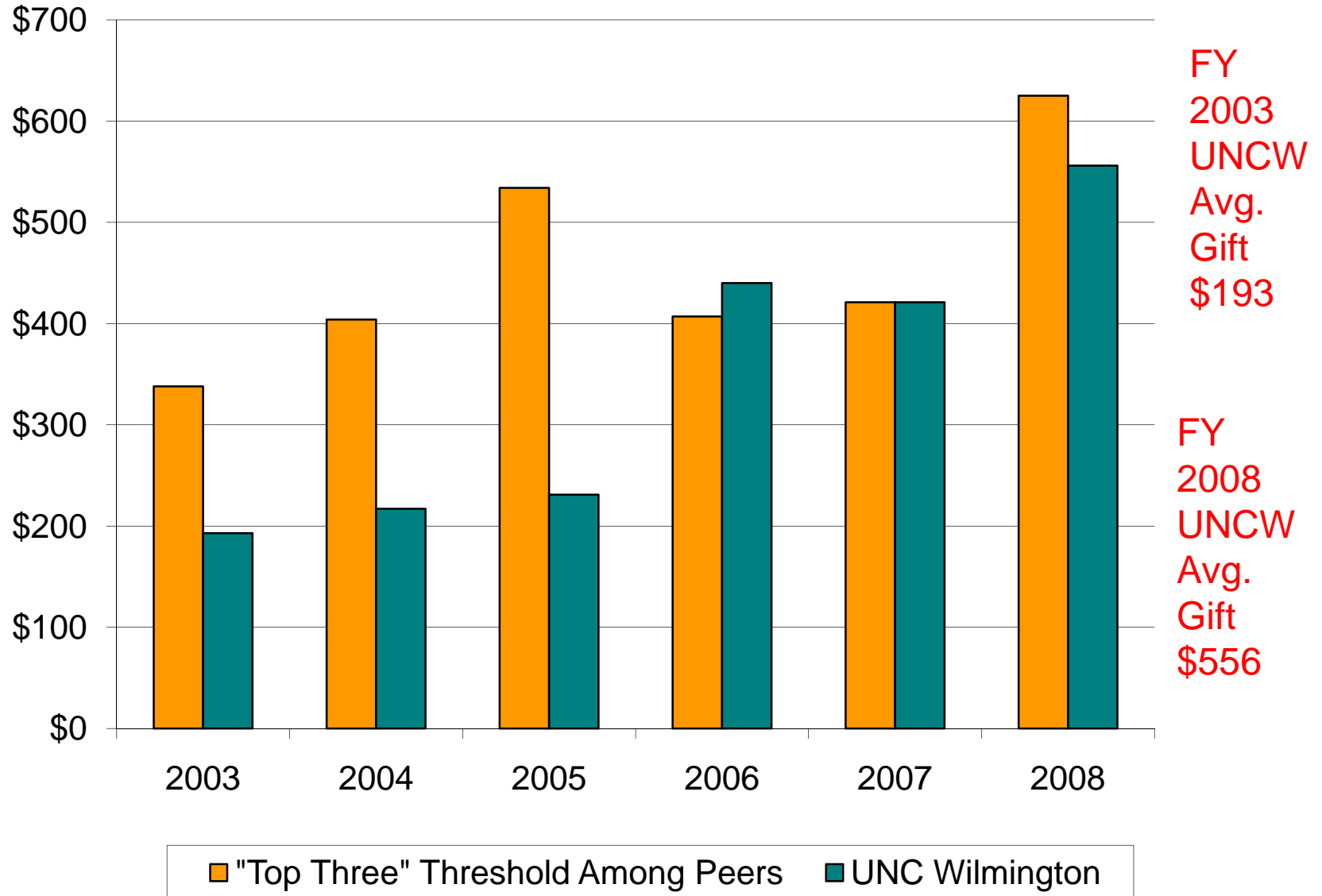


FY 2003
rate:
8.8%

FY 2008
rate:
10.2%

Average Alumni Gift

Data from CAE



Additional Five-Year Changes

| | 2003-04 | 2008-09 | Percent change |
|--|---------|---------|----------------|
| Total enrollment | 11079 | 12643 | 14.1% |
| Total full-time faculty | | | |
| Total staff (EPA + SPA) | | | |
| Total operating expenses | | | |
| US News public rank (Master's South) | | | |
| US News overall rank (Master's South) | | | |

Additional Five-Year Changes

| | 2003-04 | 2008-09 | Percent change |
|--|---------|---------|----------------|
| Total enrollment | 11079 | 12643 | 14.1% |
| Total full-time faculty | 467 | 566 | 21.2% |
| Total staff (EPA + SPA) | | | |
| Total operating expenses | | | |
| US News public rank (Master's South) | | | |
| US News overall rank (Master's South) | | | |

Additional Five-Year Changes

| | 2003-04 | 2008-09 | Percent change |
|--|---------|---------|----------------|
| Total enrollment | 11079 | 12643 | 14.1% |
| Total full-time faculty | 467 | 566 | 21.2% |
| Total staff (EPA + SPA) | 990 | 1316 | 32.9% |
| Total operating expenses | | | |
| US News public rank (Master's South) | | | |
| US News overall rank (Master's South) | | | |

Additional Five-Year Changes

| | 2003-04 | 2008-09 | Percent change |
|--|----------|----------|----------------|
| Total enrollment | 11079 | 12643 | 14.1% |
| Total full-time faculty | 467 | 566 | 21.2% |
| Total staff (EPA + SPA) | 990 | 1316 | 32.9% |
| Total operating expenses | \$ 152 M | \$ 232 M | 52.6% |
| US News public rank (Master's South) | | | |
| US News overall rank (Master's South) | | | |

Additional Five-Year Changes

| | 2003-04 | 2008-09 | Percent change |
|--|----------|----------|----------------|
| Total enrollment | 11079 | 12643 | 14.1% |
| Total full-time faculty | 467 | 566 | 21.2% |
| Total staff (EPA + SPA) | 990 | 1316 | 32.9% |
| Total operating expenses | \$ 152 M | \$ 232 M | 52.6% |
| US News public rank (Master's South) | 6 | 6 | |
| US News overall rank (Master's South) | 18 (tie) | 12 (tie) | |



www.uncw.edu/planning/peers.htm